

# LUCK1 ONE ARRIVAL (RNAV)

SW-3, 28 NOV 2024 to 26 DEC 2024

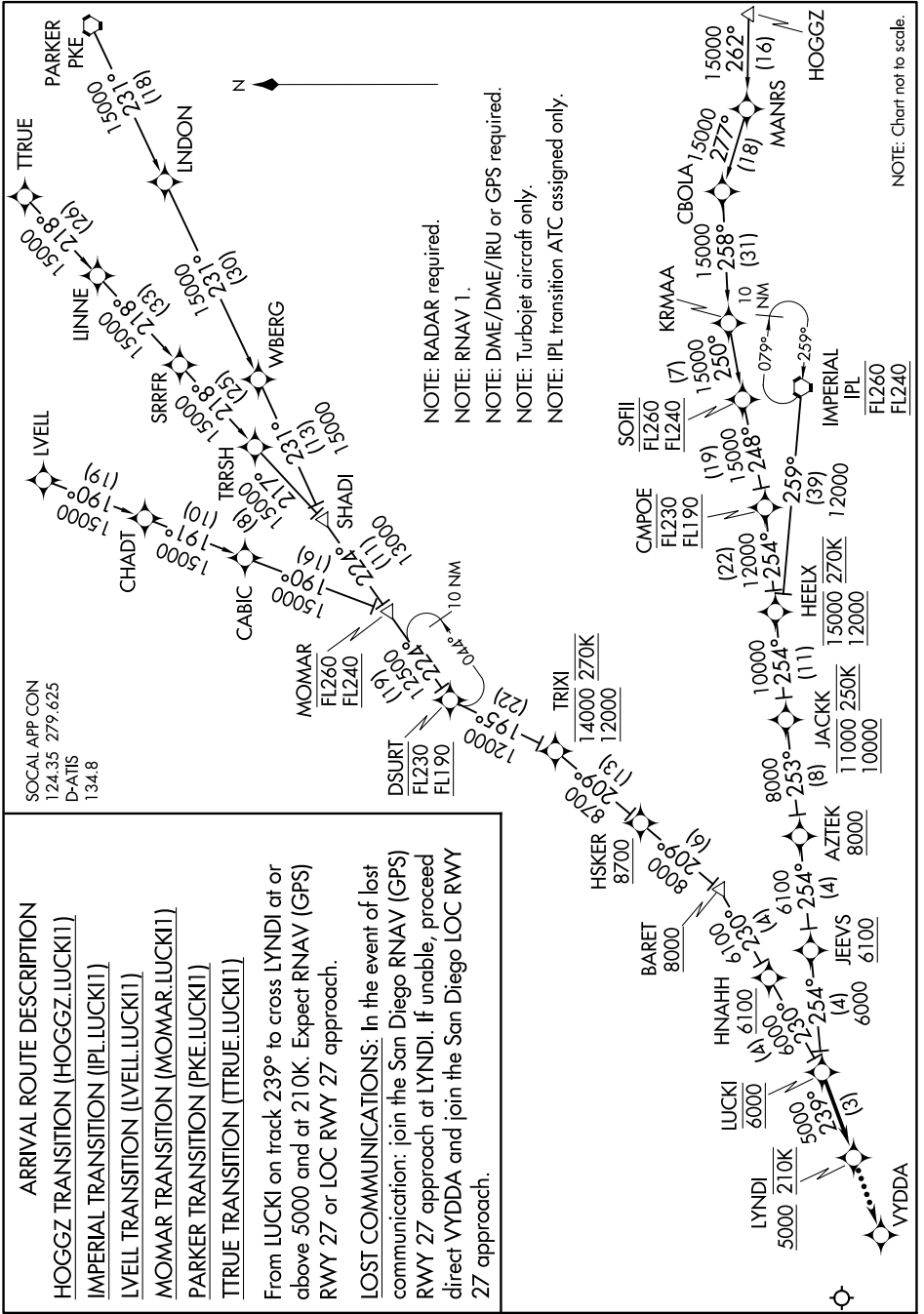
**ARRIVAL ROUTE DESCRIPTION**

HOGGZ TRANSITION (HOGGZ.LUCK11)  
IMPERIAL TRANSITION (IPL.LUCK11)  
LVELL TRANSITION (LVELL.LUCK11)  
MOMAR TRANSITION (MOMAR.LUCK11)  
PARKER TRANSITION (PKE.LUCK11)  
TTRUE TRANSITION (TTRUE.LUCK11)

From LUCK1 on track 239° to cross LYNDI at or above 5000 and at 210K. Expect RNAV (GPS) RWY 27 or LOC RWY 27 approach.

**LOST COMMUNICATIONS:** In the event of lost communication: join the San Diego RNAV (GPS) RWY 27 approach at LYNDI. If unable, proceed direct VYDDA and join the San Diego LOC RWY 27 approach.

# LUCK1 ONE ARRIVAL (RNAV)



SW-3, 28 NOV 2024 to 26 DEC 2024