

(PEBLE6.PEBLE) 23334

PEBLE SIX DEPARTURE

AL-373 (FAA)

SAN DIEGO INTL (SAN)
SAN DIEGO, CALIFORNIA

**TOP ALTITUDE:
ASSIGNED BY ATC**

SEAL BEACH
115.7 SLI Chan 104

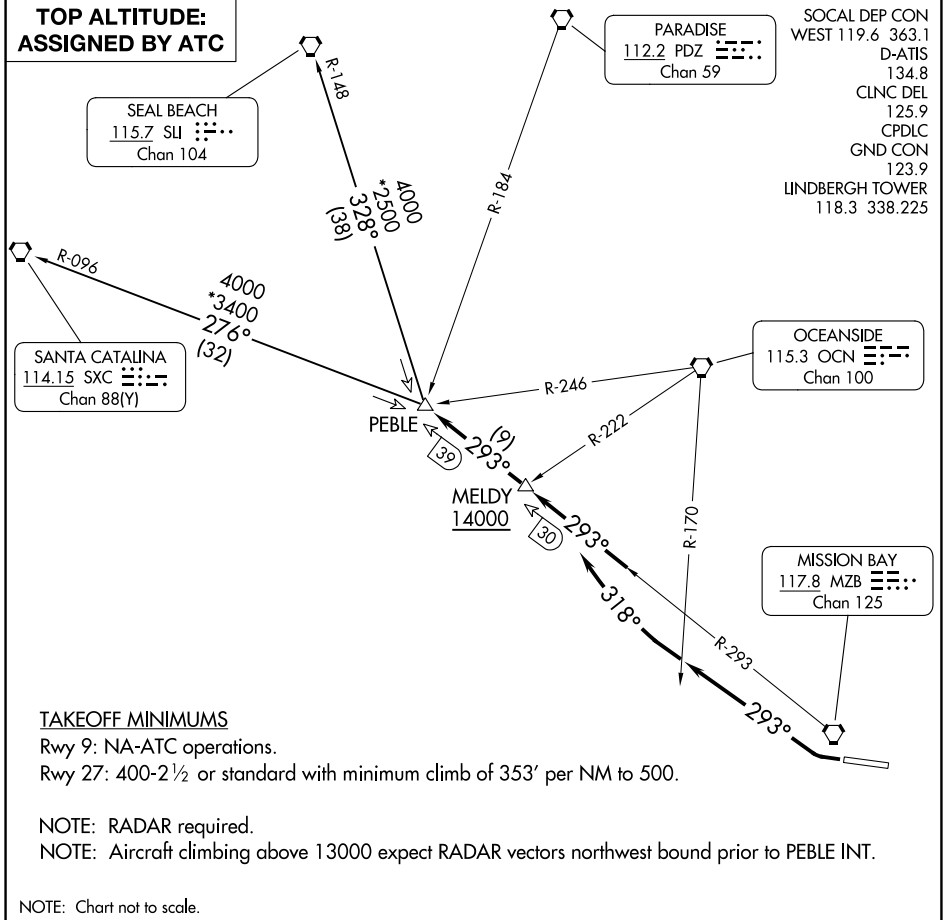
PARADISE
112.2 PDZ Chan 59

SOCAL DEP CON
WEST 119.6 363.1
D-ATIS
134.8
CLNC DEL
125.9
CPDLC
GND CON
123.9
LINDBERGH TOWER
118.3 338.225

SANTA CATALINA
114.15 SXC Chan 88(Y)

OCEANSIDE
115.3 OCN Chan 100

MISSION BAY
117.8 MZB Chan 125



TAKEOFF MINIMUMS

Rwy 9: NA-ATC operations.

Rwy 27: 400-2½ or standard with minimum climb of 353' per NM to 500.

NOTE: RADAR required.

NOTE: Aircraft climbing above 13000 expect RADAR vectors northwest bound prior to PEBLE INT.

NOTE: Chart not to scale.

DEPARTURE ROUTE DESCRIPTION

TAKEOFF RUNWAY 27: Climbing right turn heading 293° until crossing OCN VORTAC R-170, then turn right heading 318° to intercept MZB VORTAC R-293 to cross MELDY INT/MZB 30 DME at or above 14000 (or lower ATC assigned altitude) then on MZB R-293 to PEBLE INT/MZB 39 DME, thence. . . .

. . . . via (transition) or (assigned route). Maintain assigned altitude.

SANTA CATALINA TRANSITION (PEBLE6.SXC): From over PEBLE INT on SXC R-096 to SXC VORTAC.

SEAL BEACH TRANSITION (PEBLE6.SLI): From over PEBLE INT on SLI R-148 to SLI VORTAC.

PEBLE SIX DEPARTURE

(PEBLE6.PEBLE) 20AUG15

SAN DIEGO, CALIFORNIA
SAN DIEGO INTL (SAN)

SW-3, 28 NOV 2024 to 26 DEC 2024

SW-3, 28 NOV 2024 to 26 DEC 2024