

LOC/DME	I-SAN	APCH CRS	Rwy Ildg	N/A
111.55		095°	THRE	N/A
Chan	52(Y)		Arprt Elev	26

[USN]

NORTH ISLAND NAS (HALSEY FIELD) (KNZY)

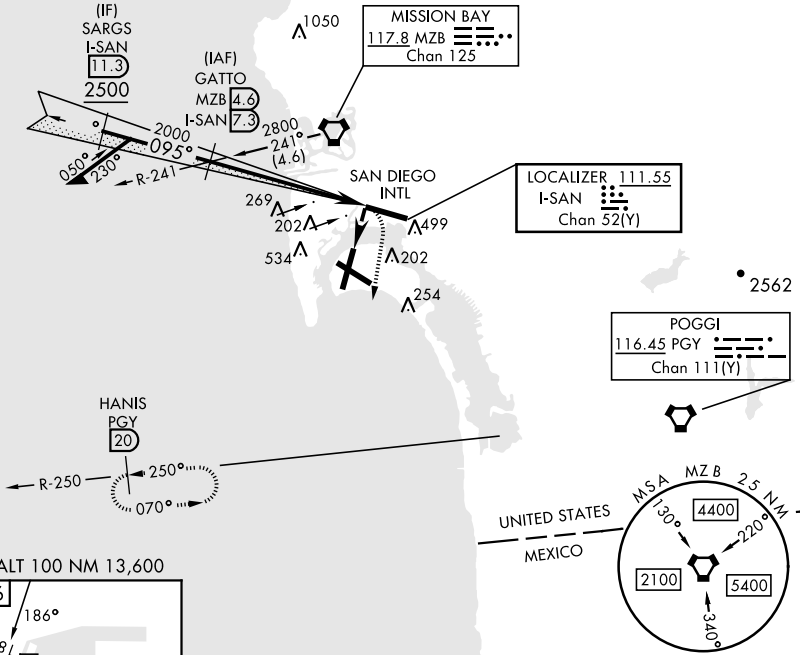
RADAR required at SARGs.

▼ \* CAUTION: Maneuvering for circling approach not authorized W of Rwy 18-36 centerline. Approach authorized for Rwy 18 or left downwind approach to Rwy 29 after flying down Rwy 18.

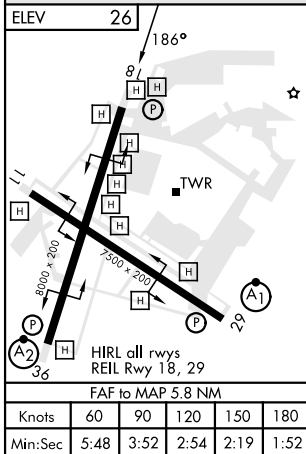
MISSED APPROACH: Climb and maintain 2000 via hdg 177°, intercept PGY VORTAC R-250 to HANIS and hold.

ATIS ★	SOCAL APP CON	NORTH ISLAND TOWER ★	LINDBERGH TOWER	GND CON	CLNC DEL	PAR/ASR
317.8	125.15 317.55	135.1 336.4	118.3 338.225	118.0 360.675	128.4 288.25	

CAUTION: Aircraft executing missed approach after beginning circling maneuver do not return to missed approach point.



EMERG SAFE ALT 100 NM 13,600



GATTO MZB 4.6 I-SAN 7.3	2000 hdg 177°	PGY R-250	HANIS PGY 20	
				Remain within 10 NM
2000 → 095° → 2000	2000 ↗ 275°	2000 ↘ 095°	ZURSA I-SAN 1.5 Fly visual to airport 186° hdg 1.7 NM	
5.8 NM		1.7 NM		
CATEGORY	A	B	C	D
CIRCLING*	860-2	834 (900-2)	880-2½ 854 (900-2½)	880-2¾ 854 (900-2¾)

SW-3, 28 NOV 2024 to 26 DEC 2024

SW-3, 28 NOV 2024 to 26 DEC 2024