

# CIITY THREE DEPARTURE (RNAV)

AL-375 (FAA)

SAN FRANCISCO INTL (SFO)  
SAN FRANCISCO, CALIFORNIA

SW-2, 28 NOV 2024 to 26 DEC 2024

**TOP ALTITUDE:**  
**FL190**

**TAKEOFF MINIMUMS**  
Rwys 10L/R: Standard with minimum climb of 500' per NM to 520.  
Rwys 19L/R: Standard with minimum climb of 575' per NM to 2000.

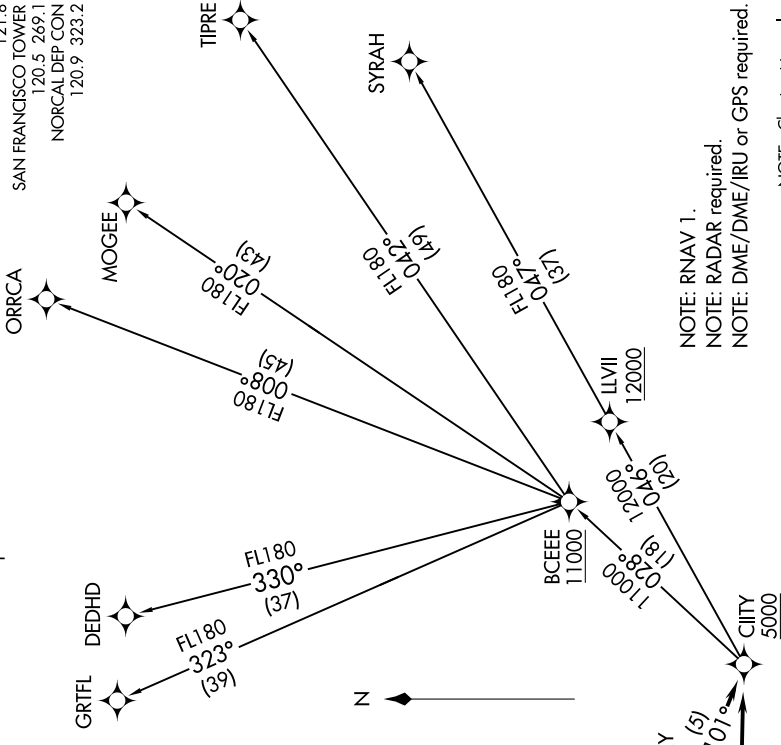
## DEPARTURE ROUTE DESCRIPTION

**TAKEOFF RUNWAY 10L:** Climb heading 104° to 520, then direct ORYAN, then on track 102° to SAHEY, then on track 101° to cross CIITY at or above 5000. Thence. . . .  
**TAKEOFF RUNWAY 10R:** Climb heading 104° to 520, then direct URRSA, then on track 101° to SAHEY, then on track 101° to cross CIITY at or above 5000. Thence. . . .  
**TAKEOFF RUNWAYS 19L/19R:** Climb heading 194° to 520, then left turn direct to cross CIITY at or above 5000. Thence. . . .

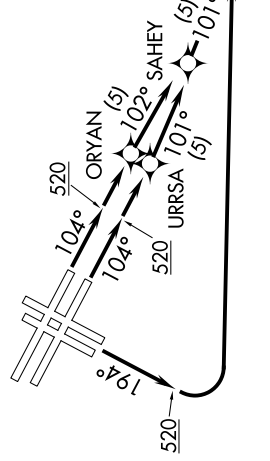
. . . on (transition). Maintain FL190. Expect filed altitude 10 minutes after departure.

- DEDHD TRANSITION (CIITY3.DEDHD)
- GRITFL TRANSITION (CIITY3.GRITFL)
- MOGEE TRANSITION (CIITY3.MOGEE)
- ORRCA TRANSITION (CIITY3.ORRCA)
- SYRAH TRANSITION (CIITY3.SYRAH)
- TIPRE TRANSITION (CIITY3.TIPRE)

D-ATIS 113.7 115.8 118.85  
CLNC DEL 118.2  
CPDIC  
GND CON 121.8  
SAN FRANCISCO TOWER 120.5 269.1  
NORCAL DEP CON 120.9 323.2



NOTE: RNAV 1.  
NOTE: RADAR required.  
NOTE: DME/DME/IRU or GPS required.  
NOTE: Chart not to scale.



# CIITY THREE DEPARTURE (RNAV)

SW-2, 28 NOV 2024 to 26 DEC 2024