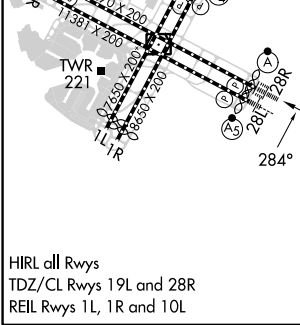
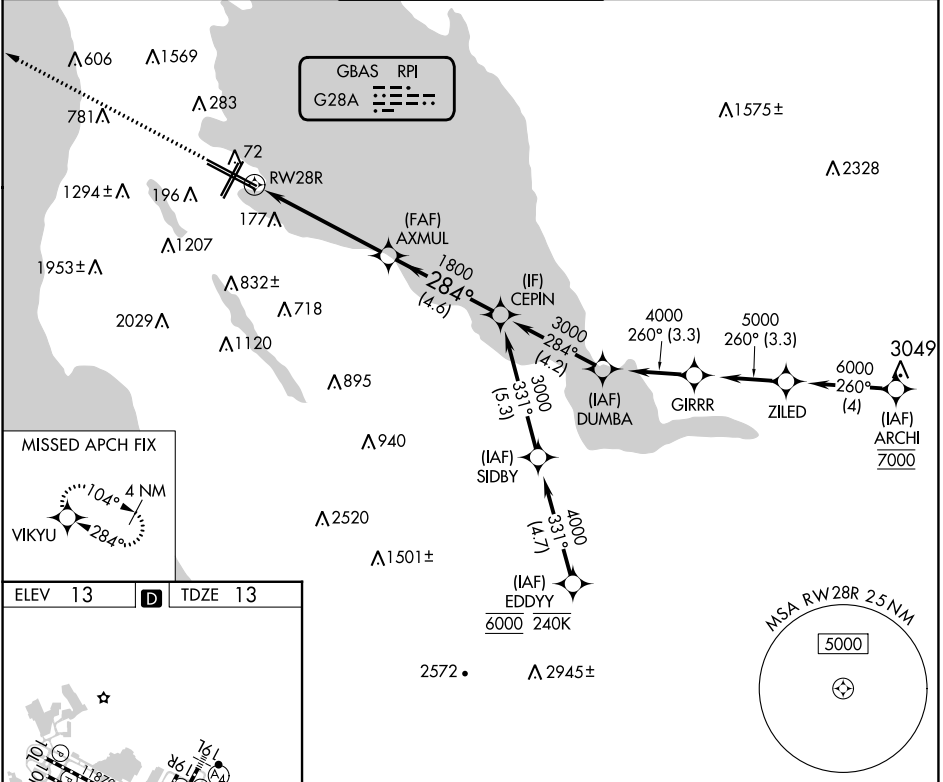


GBAS CH <b>20626</b> <b>G28A</b>	APP CRS <b>284°</b>	Rwy Idg <b>11236</b> TDZE <b>13</b> Apt Elev <b>13</b>
--	------------------------	--

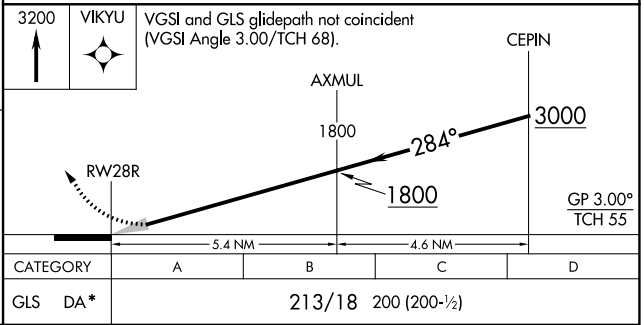
# GLS RWY 28R

SAN FRANCISCO INTL (SFO)

RNP APCH-GPS.		ALSF-2		MISSED APPROACH: Climb to 3200 direct VIKYU and hold.	
<p>Simultaneous approach authorized. Simultaneous operations require use of vertical guidance; maintain last assigned altitude until established on glidepath. Use of FD or AP required during simultaneous operations. Autopilot coupled approach NA below 213 feet.</p>				<p>*Missed approach requires minimum climb of 350 feet per NM to 1900; if unable to meet climb gradient, see RNAV (GPS) Z RWY 28R.</p>	
D-ATIS <b>113.7 115.8</b> <b>118.85</b>	NORCAL APP CON <b>134.5 338.2</b>	SAN FRANCISCO TOWER <b>120.5 269.1</b>		GND CON <b>121.8</b>	CLNC DEL <b>118.2</b>
			CPDLC		



HIRL all Rwys  
TDZ/CL Rwys 19L and 28R  
REIL Rwys 1L, 1R and 10L



SW-2, 28 NOV 2024 to 26 DEC 2024

SW-2, 28 NOV 2024 to 26 DEC 2024