

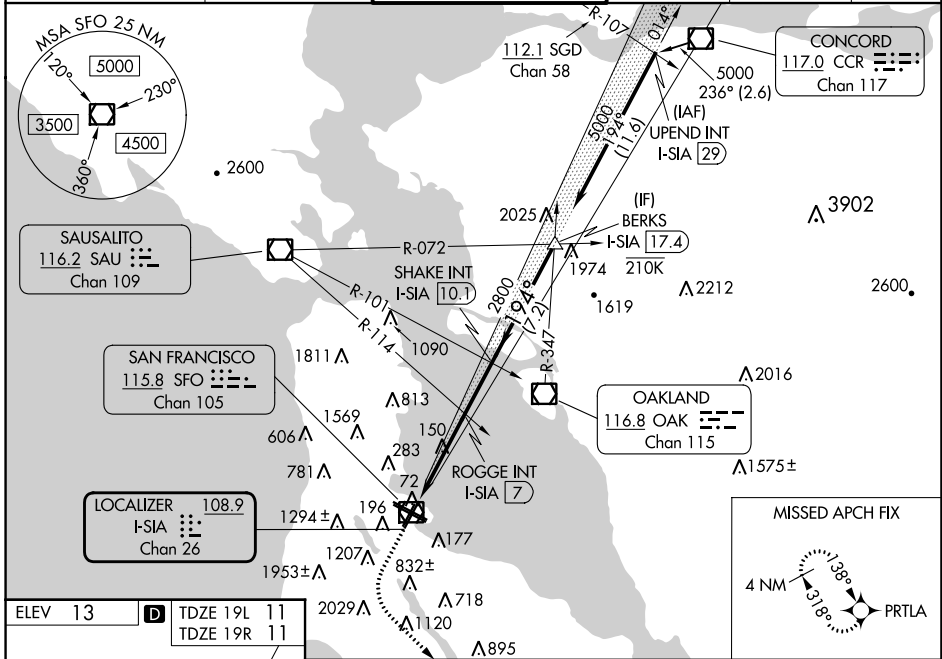
LOC/DME I-SIA 108.9 Chan 26	APP CRS 194°	Rwy Idg TDZE Apt Elev	19L 8650 11 13	19R 7650 11 13
---	------------------------	-----------------------------	--	--

ILS or LOC RWY 19L

SAN FRANCISCO INTL (SFO)

RNP APCH - GPS.	MALSf Rwy 19L	MISSED APPROACH: Climb to 1100 then climbing left turn to 4000 direct to PRTLA and hold. *Missed approach requires minimum climb of 357 feet per NM to 2000.
<p>⚠ Inop table does not apply to S-LOC Rwy 19L or Sidestep Rwy 19R. Simultaneous approach authorized. Simultaneous operations require use of vertical guidance; maintain last assigned altitude until established on the glideslope. For inop ALS, increase S-ILS Rwy 19L* all Cats visibility to RVR 4500, S-ILS Rwy 19L all Cats visibility to 2½ SM. Sidestep NA until passing ROGGE INT.</p>		

D-ATIS 113.7 115.8 118.85	NORCAL APP CON 134.5 338.2	SAN FRANCISCO TOWER 120.5 269.1	GND CON 121.8	CLNC DEL 118.2	CPDLC
-------------------------------------	--------------------------------------	---	-------------------------	--------------------------	-------



ELEV 13	D	TDZE 19L 11	TDZE 19R 11
<p>194°</p>			
HIRL all Rwys			
TDZ/CL Rwys 19L and 28R			
REIL Rwys 1L, 1R and 10L			
FAF to MAP 8.6 NM			
Knots	60	90	120 150 180
Min:Sec	8:36	5:44	4:18 3:26 2:52

<p>1100 4000 PRTLA</p> <p>VGSI and ILS glidepath not coincident (VGSI Angle 3.00/TCH 71).</p> <p>SHAKE INT I-SIA [10.1]</p> <p>ROGGE INT I-SIA [7]</p> <p>SHAKE INT I-SIA [10.1]</p> <p>BERKS I-SIA [17.4]</p> <p>GS 3.00° TCH 55</p>			
<p>2.5 NM 3 NM 3.1 NM 7.2 NM</p>			
CATEGORY	A	B	C D
S-ILS 19L*	300/40		289 (300-¾)
S-ILS 19L	774-2		763 (800-2)
S-LOC 19L	1800-1¼ 1789 (1800-1¼)	1800-1½ 1789 (1800-1½)	1800-3 1789 (1800-3)
ROGGE FIX MINIMUMS (DUAL VOR RECEIVERS OR DME REQUIRED)			
S-LOC 19L	880/40 869 (900-¾)	880/55 869 (900-1)	880-2½ 869 (900-2½)
SIDESTEP 19R	880-2 869 (900-2)		880-3 869 (900-3)

SW-2, 28 NOV 2024 to 26 DEC 2024

SW-2, 28 NOV 2024 to 26 DEC 2024