

LOC/DME I-SFO	APP CRS	Rwy Idg	10275
109.55	284°	TDZE	13
Chan 32(Y)		Apt Elev	13

ILS or LOC RWY 28L

SAN FRANCISCO INTL (SFO)

DME required. RNP APCH-GPS or RADAR required for procedure entry.

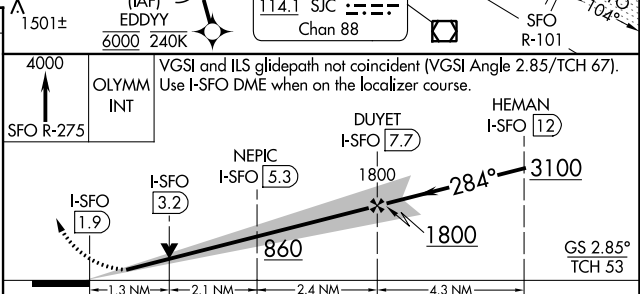
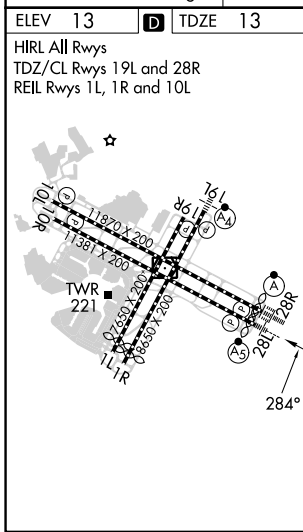
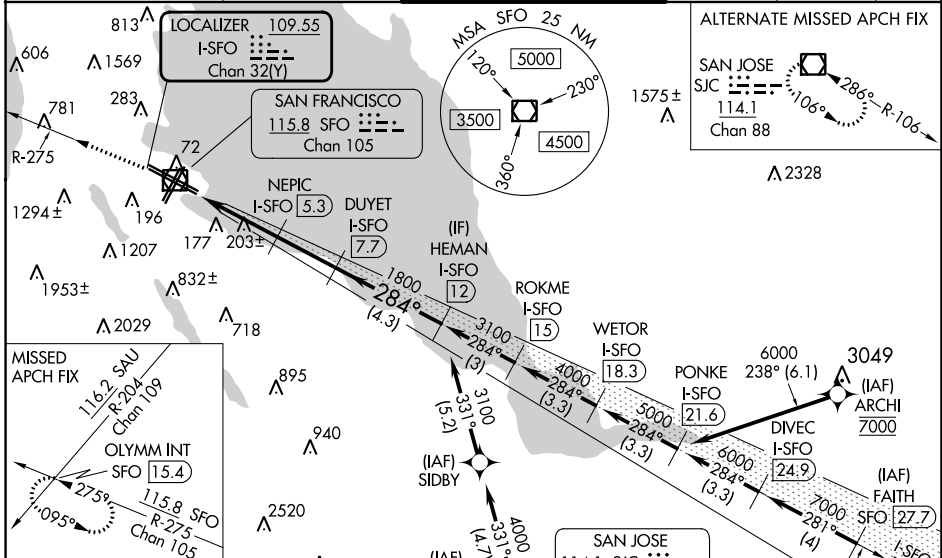
⚠ Circling NA to Rwys 10L, 10R, 19L, and 19R. Circling to Rwy 1L and 1R NA at night. Simultaneous approach authorized. Simultaneous operations require use of vertical guidance; maintain last assigned altitude until established on glideslope. LOC procedure NA during simultaneous operations.

*RVR 1800 authorized with use of FD or AP or HUD to 2A.
 †For inop ALS, increase S-ILS 28L all Cats visibility to 2½ SM.
 **For inop ALS increase S-LOC 28L Cat C/D visibility to 2½ SM.

MALSRR
 (AS)

MISSED APPROACH: Climb to 4000 on SFO VOR/DME R-275 to OLYMM INT/SFO 15.4 DME and hold, continue climb-in-hold to 4000. #Missed approach requires minimum climb of 330 feet per NM to 1600.

D-ATIS	NORCAL APP CON	SAN FRANCISCO TOWER	GND CON	CLNC DEL	CPDLC
113.7 115.8 118.85	134.5 338.2	120.5 269.1	121.8	118.2	



CATEGORY	A	B	C	D
S-ILS 28L#*	213/24		200 (200-½)	
S-ILS 28L†	789-1¾		776 (800-1¼)	
S-LOC 28L#	460/24 447 (500-½)		460/45 447 (500-¾)	
S-LOC 28L**	860/24 847 (900-½)		860-178 847 (900-178)	
C CIRCLING	860-1¼ 847 (900-1¼)		960-1¼ 1547 (1600-3)	

SW-2, 28 NOV 2024 to 26 DEC 2024

SW-2, 28 NOV 2024 to 26 DEC 2024