

|  |                        |   |
|--|------------------------|---|
| WAAS<br>CH <b>53533</b><br><b>W19B</b> | APP CRS<br><b>194°</b> | Rwy Idg <b>7650</b><br>TDZE <b>11</b><br>Apt Elev <b>13</b> |
|--|------------------------|---|

# RNAV (GPS) Y RWY 19R

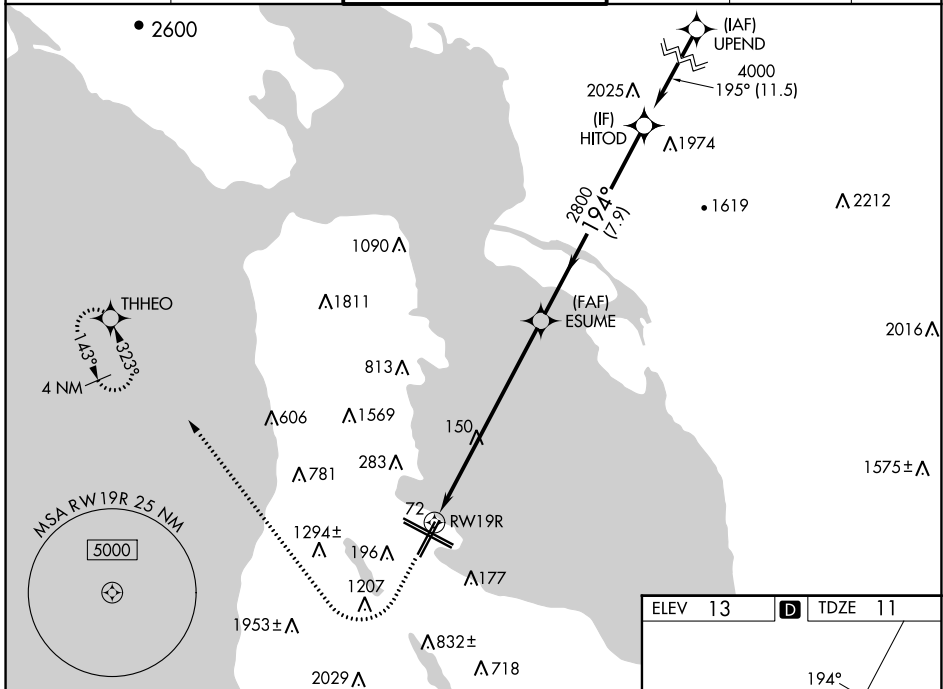
SAN FRANCISCO INTL (SFO)

RNP APCH-GPS.

⚠ LNAV procedure NA during simultaneous operations. Use of FD or AP required during simultaneous operations. For uncompensated Baro-VNAV systems, LNAV/VNAV NA below 4°C or above 54°C. Simultaneous approach authorized. Simultaneous operations require use of vertical guidance; maintain last assigned altitude until established on glidepath. Simultaneous approach NA below 12°C (52°F).

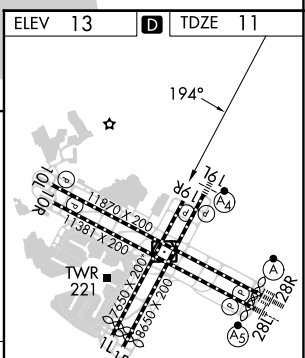
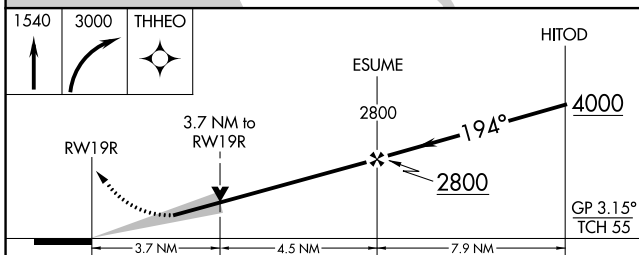
MISSED APPROACH: Climb to 1540 then climbing right turn to 3000 direct THHEO and hold.

|   |                                      |   |                         |                          |       |
|---|--------------------------------------|---|-------------------------|--------------------------|-------|
| D-ATIS<br><b>113.7 115.8</b><br><b>118.85</b> | NORCAL APP CON<br><b>134.5 338.2</b> | SAN FRANCISCO TOWER<br><b>120.5 269.1</b> | GND CON<br><b>121.8</b> | CLNC DEL<br><b>118.2</b> | CPDLC |
|---|--------------------------------------|---|-------------------------|--------------------------|-------|



SW-2, 28 NOV 2024 to 26 DEC 2024

SW-2, 28 NOV 2024 to 26 DEC 2024



| CATEGORY     | A                         | B                         | C            | D             |
|--------------|---------------------------|---------------------------|--------------|---------------|
| LPV DA       | 1005-4                    |                           | 994 (1000-4) |               |
| LNAV/VNAV DA | 878-2½                    |                           | 867 (900-2½) |               |
| LNAV MDA     | 1320-1¼<br>1309 (1400-1¼) | 1320-1½<br>1309 (1400-1½) | 1320-3       | 1309 (1400-3) |

TDZ/CL Rwy 19L and 28R  
REIL Rwy 1L, 1R and 10L  
HIRL all Rwy