

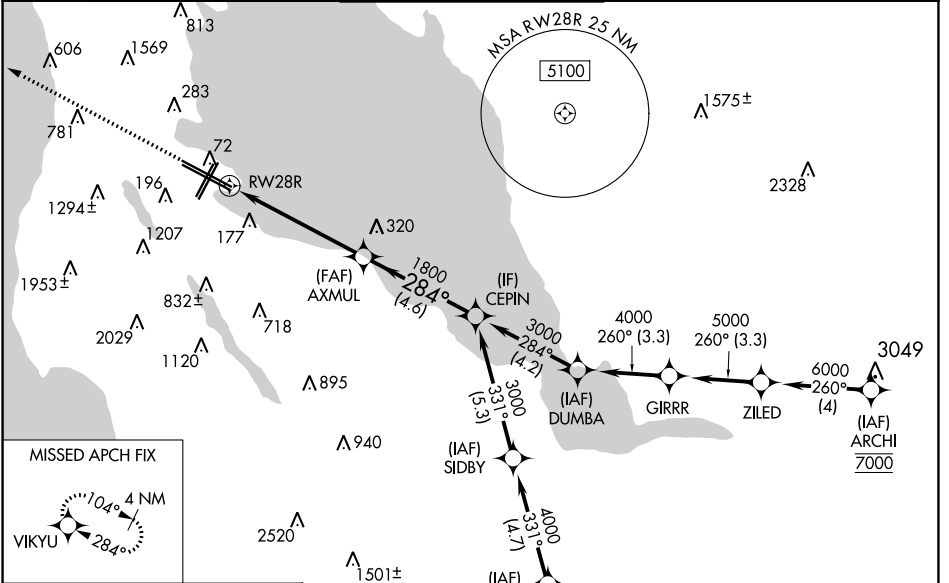
# RNAV (GPS) Z RWY 28R

SAN FRANCISCO INTL (SFO)

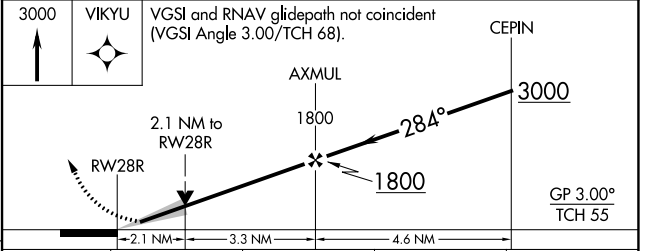
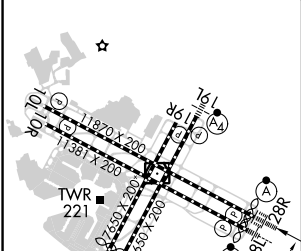
WAAS CH <b>48803</b> <b>W28A</b>	APP CRS <b>284°</b>	Rwy Idg TDZE Apt Elev	<b>11236</b> <b>13</b> <b>13</b>
--	------------------------	-----------------------------	--

RNP APCH - GPS.	ALSF-2	MISSED APPROACH: Climb to 3000 direct VIKYU and hold. *Missed approach requires minimum climb of 350 feet per NM to 1900; if unable to meet climb gradient, see RNAV (GPS) RWY 28L.
<p><b>⚠</b> Circling NA to Rwy's 10L, 10R, 19L, and 19R. Circling Rwy 1L, 1R NA at night. For uncompensated Baro-VNAV systems, LNAV/VNAV NA below 4°C or above 54°C. For inop ALS, increase LNAV/VNAV all Cats visibility to 1½ SM, increase LNAV Cat C/D visibility to 2 SM.</p>		

D-ATIS <b>113.7 115.8</b> <b>118.85</b>	NORCAL APP CON <b>134.5 338.2</b>	SAN FRANCISCO TOWER <b>120.5 269.1</b>	GND CON <b>121.8</b>	CLNC DEL <b>118.2</b>	CPDLC
---	--------------------------------------	---	-------------------------	--------------------------	-------



ELEV 13	<b>D</b>	TDZE 13
---------	----------	---------



CATEGORY	A	B	C	D
LPV DA*		213/18	200 (200-½)	
LNAV/VNAV DA		642-1⅓	629 (700-1⅓)	
LNAV MDA	760/24 747 (800-½)	760/40 747 (800-¾)	760-1¾	747 (800-1¾)
<b>C</b> CIRCLING	760-1 747 (800-1)	1020-1½ 1007 (1100-1½)	1640-3 1627 (1700-3)	NA

TDZ/CL Rwy's 19L and 28R  
REIL Rwy's 1L, 1R and 10L  
HIRL all Rwy's

SW-2, 28 NOV 2024 to 26 DEC 2024

SW-2, 28 NOV 2024 to 26 DEC 2024