

(SEGUL1.SEGUL) 24193

SEGUL ONE DEPARTURE (RNAV)

SAN FRANCISCO INTL (SFO)
SAN FRANCISCO, CALIFORNIA

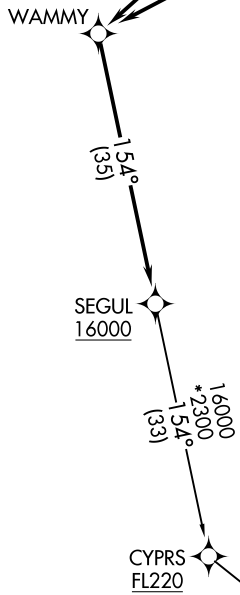
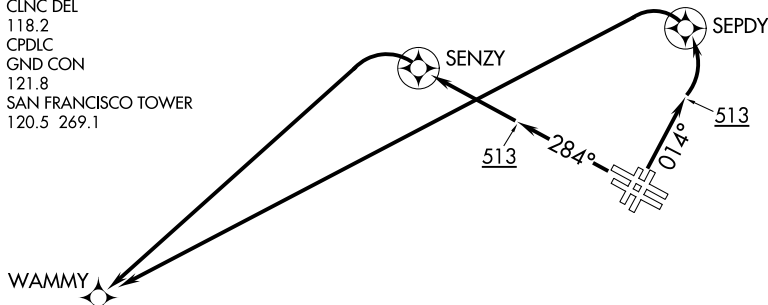
AL-375 (FAA)

RNAV 1 - DME/DME/IRU or GPS.

RADAR required for non-GPS equipped aircraft.

NORCAL DEP CON
135.1 307.2
D-ATIS
113.7 115.8 118.85
CLNC DEL
118.2
CPDLC
GND CON
121.8
SAN FRANCISCO TOWER
120.5 269.1

**TOP ALTITUDE:
ASSIGNED BY ATC**



DEPARTURE ROUTE DESCRIPTION

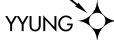
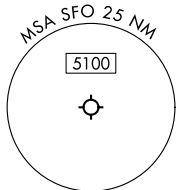
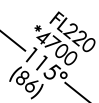
TAKEOFF RUNWAYS 1L/R: Climb on heading 014° to 513, then left turn direct SEPDY, then left turn direct WAMMY, then on track 154° to cross SEGUL at or above 16000, thence

TAKEOFF RUNWAYS 28L/R: Climb on heading 284° to 513, then direct SENZY, then left turn direct WAMMY, then on track 154° to cross SEGUL at or above 16000, thence

. . . . on YYUNG Transition. Maintain ATC assigned altitude, expect filed altitude 10 minutes after departure.

YYUNG TRANSITION (SEGUL1.YYUNG)

TAKEOFF MINIMUMS
 Rwy 10L/R, 19L/R: NA - ATC
 Rwy 1L/R: Standard with minimum climb of 500'/NM to 513 then 353'/NM to 2100.
 Rwy 28L: Standard with minimum climb of 353'/NM to 1200.
 Rwy 28R: Standard with minimum climb of 361'/NM to 1100.



NOTE: Turbojet aircraft only.
NOTE: Chart not to scale.

SW-2, 28 NOV 2024 to 26 DEC 2024

SW-2, 28 NOV 2024 to 26 DEC 2024

SEGUL ONE DEPARTURE (RNAV)

(SEGUL1.SEGUL) 11 JUL 24

SAN FRANCISCO, CALIFORNIA
SAN FRANCISCO INTL (SFO)