

ANAHEIM ONE DEPARTURE
(ANAHM1.SJ) 19JUL18

JOHN WAYNE/ORANGE COUNTY (SNA)
SANTA ANA, CALIFORNIA

(ANAHM1.SJ) 23334
ANAHEIM ONE DEPARTURE

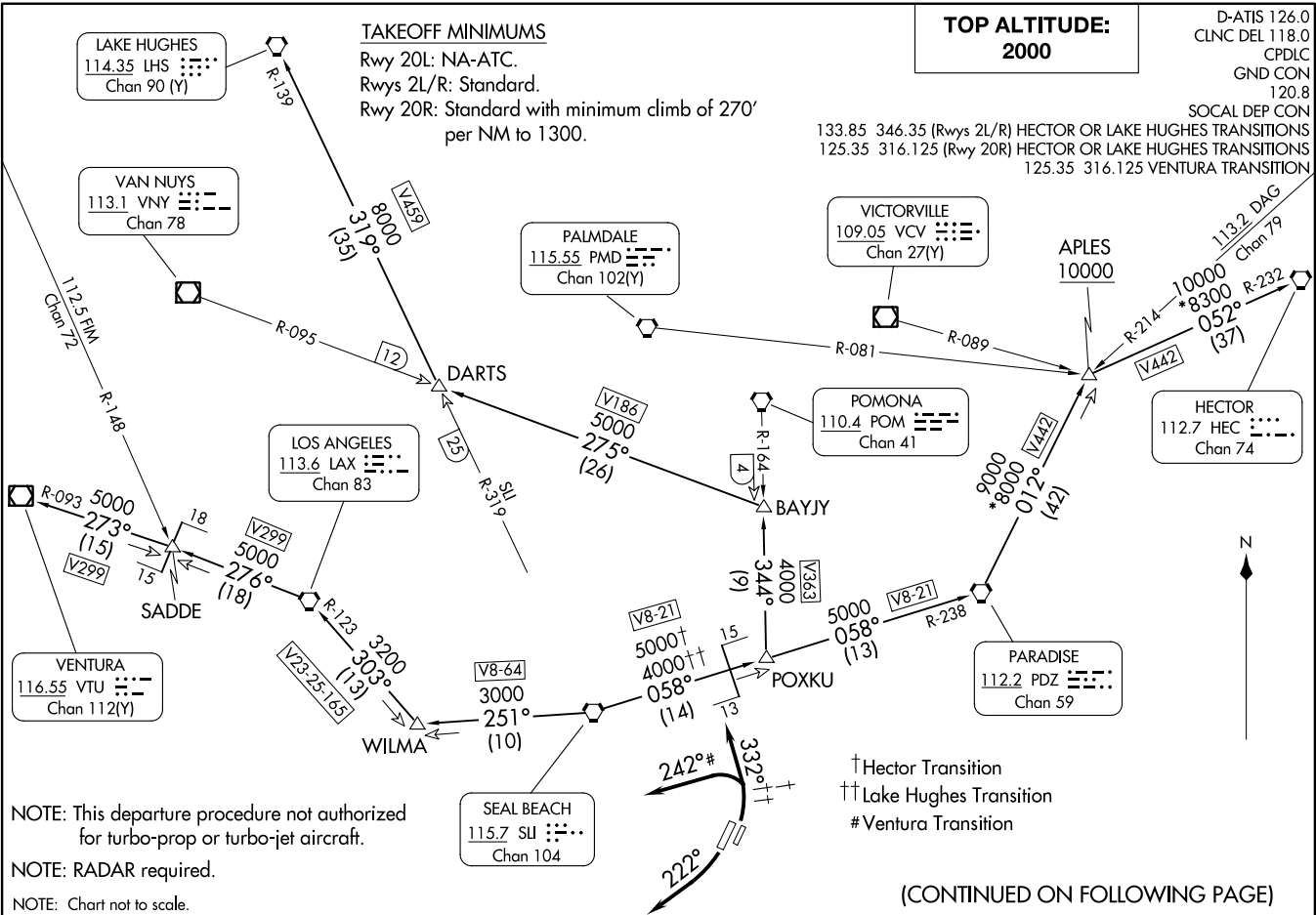
JOHN WAYNE/ORANGE COUNTY (SNA)
SANTA ANA, CALIFORNIA
AL-377 (FAA)

**TOP ALTITUDE:
2000**

D-ATIS 126.0
CLNC DEL 118.0
CPDLC
GND CON 120.8
SOCAL DEP CON
133.85 346.35 (Rwys 2L/R) HECTOR OR LAKE HUGHES TRANSITIONS
125.35 316.125 (Rwy 20R) HECTOR OR LAKE HUGHES TRANSITIONS
125.35 316.125 VENTURA TRANSITION

TAKEOFF MINIMUMS

Rwy 20L: NA-ATC.
Rwys 2L/R: Standard.
Rwy 20R: Standard with minimum climb of 270' per NM to 1300.



NOTE: This departure procedure not authorized for turbo-prop or turbo-jet aircraft.
NOTE: RADAR required.
NOTE: Chart not to scale.

† Hector Transition
†† Lake Hughes Transition
Ventura Transition

(CONTINUED ON FOLLOWING PAGE)



DEPARTURE ROUTE DESCRIPTION

TAKEOFF RUNWAY 20R: Turn right heading 222° for vectors to SLI VORTAC, thence. . . .

TAKEOFF RUNWAYS 2L/R (HECTOR or LAKE HUGHES TRANSITION): Turn left heading 332° for vectors to SLI VORTAC, thence. . . .

TAKEOFF RUNWAYS 2L/R (VENTURA TRANSITION): Turn left heading 242° for vectors to LAX VORTAC, thence. . . .

. . . .on (transition) or (assigned route). Maintain 2000 and expect filed altitude 10 minutes after departure.

HECTOR TRANSITION (ANAHM1.HEC): From over SLI VORTAC on SLI R-058 and PDZ R-238 to PDZ VORTAC, then on PDZ R-012 to APLES, then on HEC R-232 to HEC VORTAC.

LAKE HUGHES TRANSITION (ANAHM1.LHS): From over SLI VORTAC on SLI R-058 and PDZ R-238 to POXKU, then on POM R-164 to BAYJY, then on VNY R-095 to DARTS, then on LHS R-139 to LHS VORTAC.

VENTURA TRANSITION (ANAHM1.VTU): From over SLI VORTAC on SLI R-251 to WILMA, then on LAX R-123 to LAX VORTAC, then on LAX R-276 to SADDE, then on VTU R-093 to VTU VOR/DME.

SW-3, 28 NOV 2024 to 26 DEC 2024

SW-3, 28 NOV 2024 to 26 DEC 2024