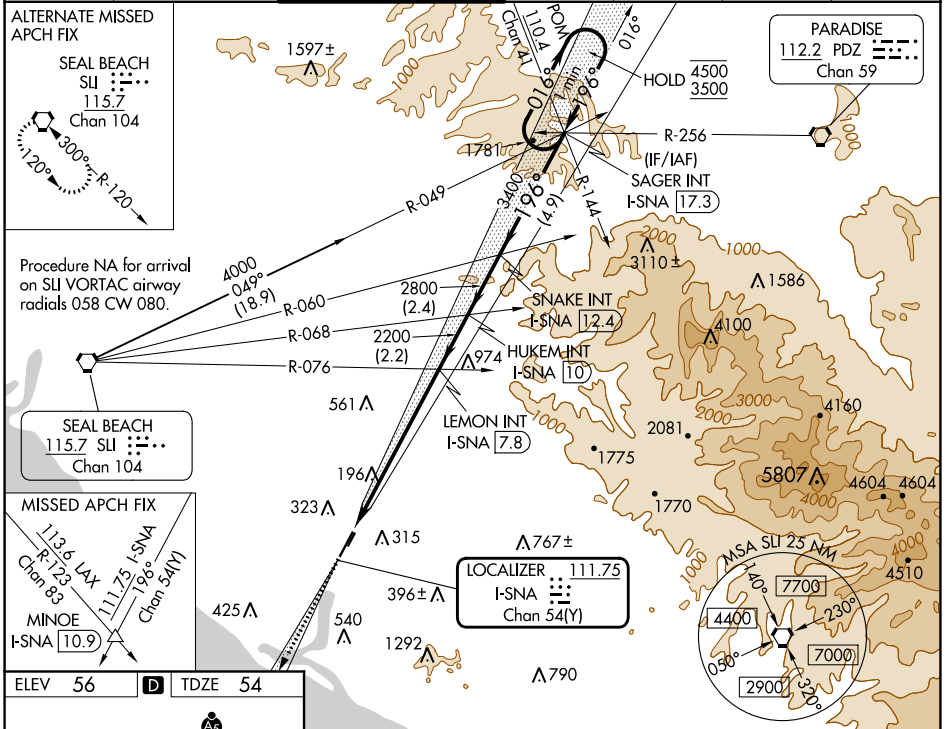


LOC/DME I-SNA <b>111.75</b> Chan <b>54(Y)</b>	APP CRS <b>196°</b>	Rwy Idg TDZE Apt Elev	<b>5700</b> <b>54</b> <b>56</b>
---	------------------------	-----------------------------	---------------------------------------

# ILS RWY 20R (SA CAT I)

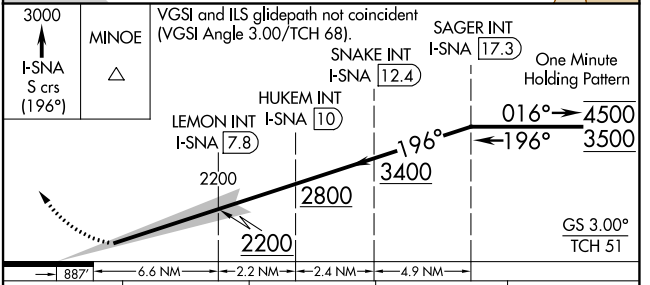
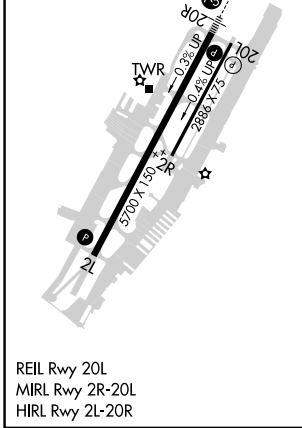
JOHN WAYNE/ORANGE COUNTY (SNA)

Requires specific OPSPEC, MSPEC, or LOA approval. Procedure NA when tower closed.		MALSR 	MISSED APPROACH: Climb to 3000 on I-SNA LOC south course (196°) to MINOE INT/I-SNA 10.9 DME.			
D-ATIS <b>126.0</b>	SOCAL APP CON <b>121.3 263.1</b>	<b>JOHN WAYNE TOWER *</b> <b>126.8 (CTAF) 0 343.625</b>	GND CON <b>120.8</b>	CLNC DEL <b>118.0</b>	CPDLC	UNICOM <b>122.95</b>



SW-3, 28 NOV 2024 to 26 DEC 2024

SW-3, 28 NOV 2024 to 26 DEC 2024



CATEGORY	A	B	C	D
S-ILS 20R	RA 201/14 167 DA 221			

**SA CATEGORY I ILS - SPECIAL AIRCREW & AIRCRAFT CERTIFICATION REQUIRED**