

IRVINE FIVE DEPARTURE  
(IRV5, IRV) 28FEB19

JOHN WAYNE/ORANGE COUNTY (SN/A)  
SANTA ANA, CALIFORNIA

D-ATIS  
126.0  
CLNC DEL  
118.0  
CPDLC  
GND CON  
120.8  
SOCAL DEP CON  
133.85 346.35

**TOP ALTITUDE:  
ASSIGNED BY ATC**

SHAFTER  
115.4 EHF  
Chan 101

DAGGETT  
113.2 DAG  
Chan 79

GORMAN  
116.1 GMN  
Chan 108

POMONA  
110.4 POM  
Chan 41

PARADISE  
112.2 PDZ  
Chan 59

NOTE: Restricted to jet and turboprop aircraft only. SHAFTER and GORMAN transitions restricted to jet aircraft only.  
NOTE: RADAR required.

SEAL BEACH  
115.7 SLI  
Chan 104  
15000

LOS ANGELES  
113.6 LAX  
Chan 83

EL TORO  
117.2 ELB  
Chan 119

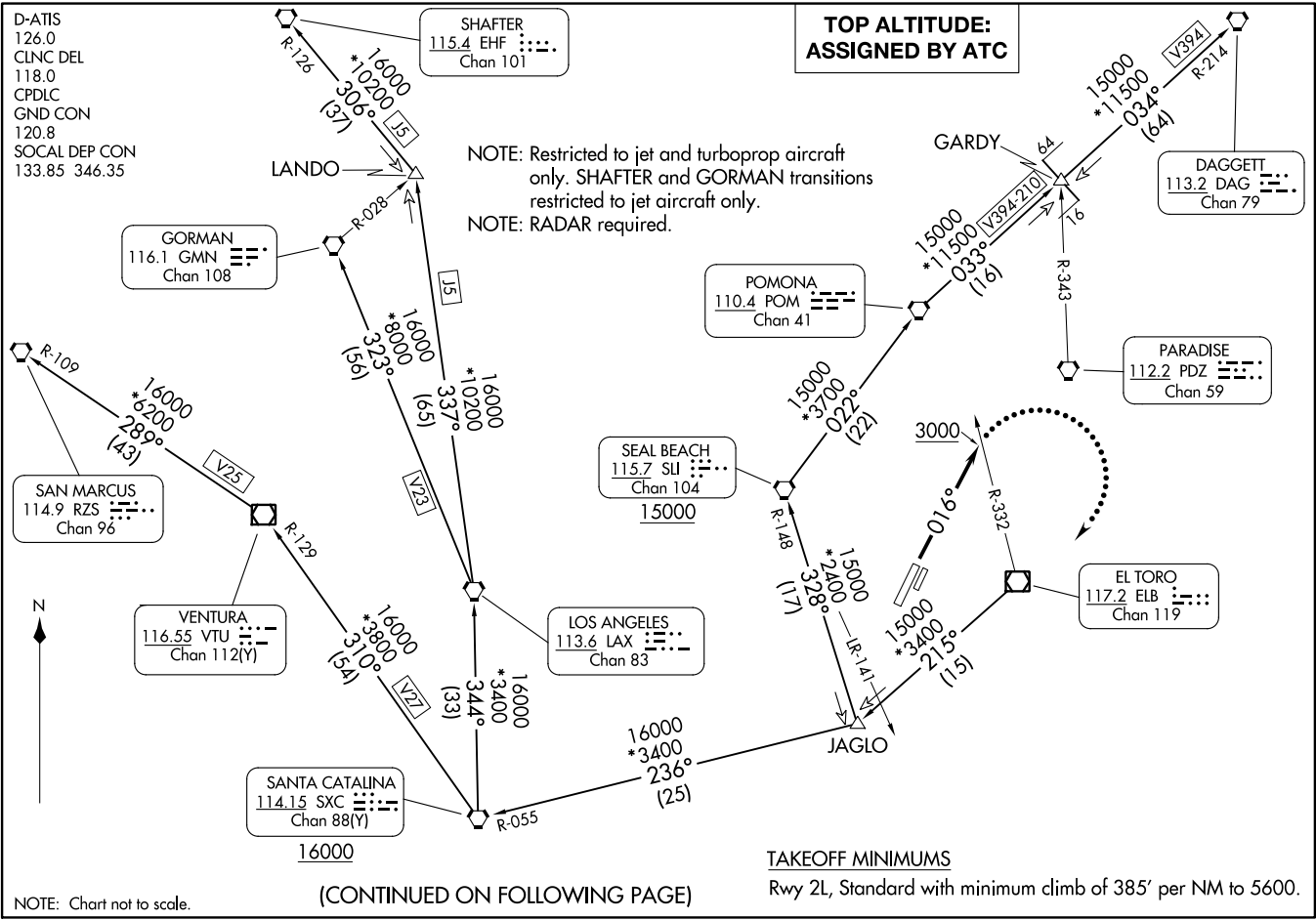
SANTA CATALINA  
114.15 SXC  
Chan 88(Y)  
16000

TAKEOFF MINIMUMS

Rwy 2L, Standard with minimum climb of 385' per NM to 5600.

(CONTINUED ON FOLLOWING PAGE)

NOTE: Chart not to scale.



IRVINE FIVE DEPARTURE  
(IRV5, IRV) 23334

AL-377 (FAA)

JOHN WAYNE/ORANGE COUNTY (SN/A)  
SANTA ANA, CALIFORNIA



DEPARTURE ROUTE DESCRIPTION

TAKEOFF RUNWAY 2L: Climb heading 016° to 3000, continue climb to assigned altitude on assigned heading for RADAR vectors to ELB VOR/DME R-215.

Thence . . . .

. . . . on (transition) or assigned route. Maintain ATC assigned altitude, expect filed altitude ten minutes after departure.

LOST COMMUNICATIONS: If not in contact with departure control by ELB R-332, turn right direct ELB VOR/DME, climb to 7000 and proceed via assigned transition or route. Climb to filed altitude ten minutes after departure.

DAGGETT TRANSITION (IRV5.DAG): From over ELB VOR/DME on ELB R-215 and SLI R-148 to SLI VORTAC, then on SLI R-022 to POM VORTAC, then on POM R-033 and DAG R-214 to DAG VORTAC.

GORMAN TRANSITION (IRV5.GMN): From over ELB VOR/DME on ELB R-215 and SXC R-055 to SXC VORTAC, then on SXC R-344 to LAX VORTAC, then on LAX R-323 to GMN VORTAC.

SAN MARCUS TRANSITION (IRV5.RZS): From over ELB VOR/DME on ELB R-215 and SXC R-055 to SXC VORTAC, then on SXC R-310 and VTU R-129 to VTU VOR/DME, then on VTU R-289 and RZS R-109 to RZS VORTAC.

SEAL BEACH TRANSITION (IRV5.SLI): From over ELB VOR/DME on ELB R-215 and on SLI R-148 to SLI VORTAC.

SHAFTER TRANSITION (IRV5.EHF): From over ELB VOR/DME on ELB R-215 and SXC R-055 to SXC VORTAC, then on SXC R-344 to LAX VORTAC, then on LAX R-337 and EHF R-126 to EHF VORTAC.

SW-3, 28 NOV 2024 to 26 DEC 2024

SW-3, 28 NOV 2024 to 26 DEC 2024