

(MUSEL8.MUSEL) 23334
MUSEL EIGHT DEPARTURE

JOHN WAYNE/ORANGE COUNTY (SNA)
 SANTA ANA, CALIFORNIA

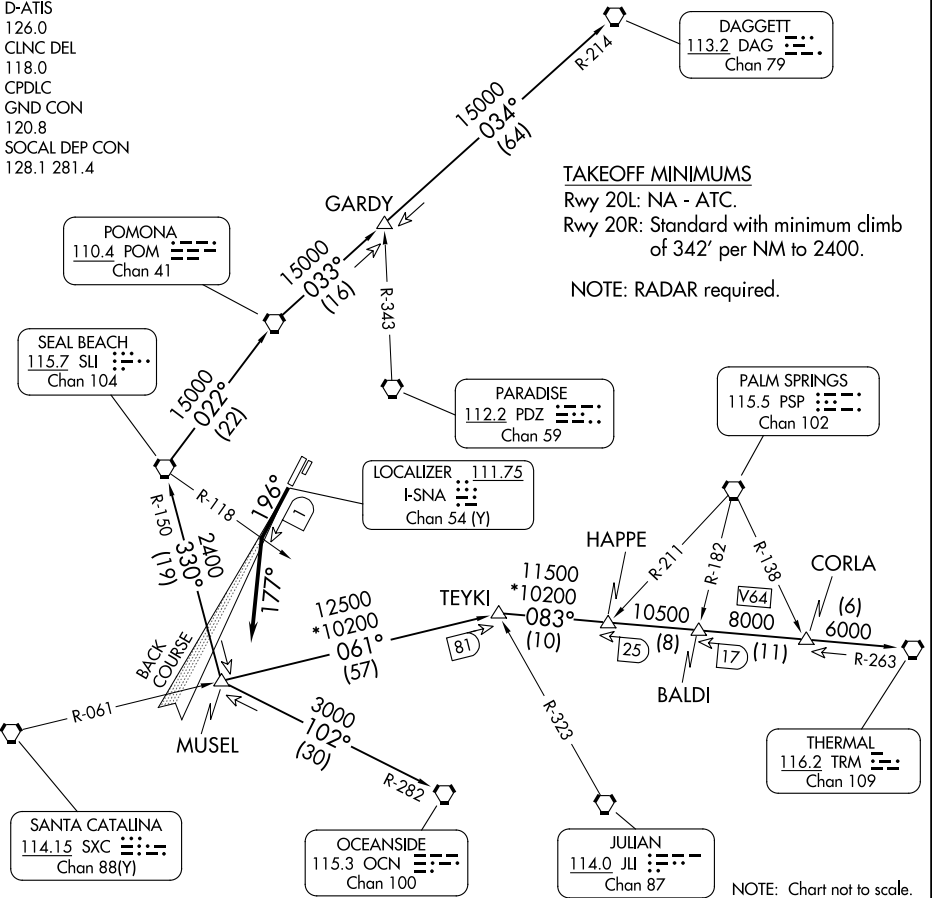
AL-377 (FAA)

D-ATIS
 126.0
 CLNC DEL
 118.0
 CPDLC
 GND CON
 120.8
 SOCAL DEP CON
 128.1 281.4

DAGGETT
 113.2 DAG
 Chan 79

TAKEOFF MINIMUMS
 Rwy 20L: NA - ATC.
 Rwy 20R: Standard with minimum climb
 of 342' per NM to 2400.

NOTE: RADAR required.



SW-3, 28 NOV 2024 to 26 DEC 2024

SW-3, 28 NOV 2024 to 26 DEC 2024

NOTE: Chart not to scale.

DEPARTURE ROUTE DESCRIPTION

TAKEOFF RUNWAY 20R: Climb heading 196° or I-SNA localizer south course to I-SNA 1 DME fix or SLI R-118, turn left heading 177° for vectors to MUSEL INT.

Thence
 on (transition) or (assigned route). Expect filed altitude ten minutes after departure.

DAGGETT TRANSITION (MUSEL8.DAG): From over MUSEL INT on SLI R-150 to SLI VORTAC, then on SLI R-022 to POM VORTAC, then on POM R-033 to GARDY INT and on DAG R-214 to DAG VORTAC.

OCEANSIDE TRANSITION (MUSEL8.OCN): From over MUSEL INT on OCN R-282 to OCN VORTAC.

SEAL BEACH TRANSITION (MUSEL8.SLI): From over MUSEL INT on SLI R-150 to SLI VORTAC.

THERMAL TRANSITION (MUSEL8.TRM): From over MUSEL INT on SXC R-061 to TEYKI INT and TRM R-263 to TRM VORTAC.

MUSEL EIGHT DEPARTURE
 (MUSEL8.MUSEL) 10NOV16

SANTA ANA, CALIFORNIA
 JOHN WAYNE/ORANGE COUNTY (SNA)