

APP CRS	Rwy Idg	5700
016°	TDZE	56
	Apt Elev	56

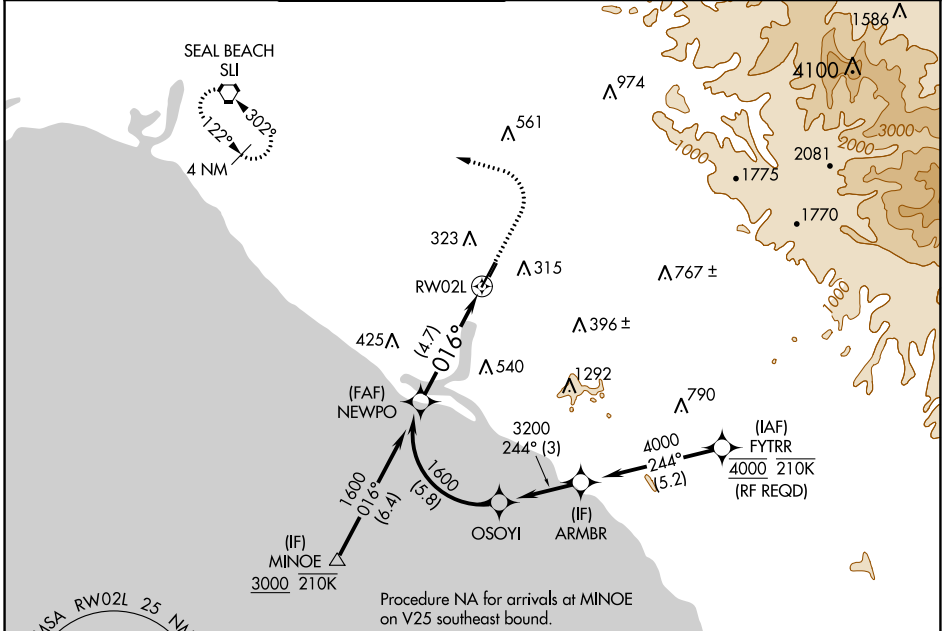
RNAV (RNP) Z RWY 2L

JOHN WAYNE/ORANGE COUNTY (SNA)

For uncompensated Baro-VNAV systems, procedure NA below 5°C (41°F) or above 54°C (130°F). GPS required.

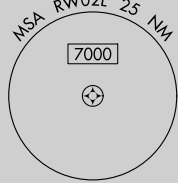
MISSED APPROACH: Climb to 800 then climbing left turn to 2600 direct SLI VORTAC and hold.

D-ATIS 126.0	SOCAL APP CON 121.3 263.1	JOHN WAYNE TOWER ★ 126.8 (CTAF) 0 343.625	GND CON 120.8	CLNC DEL 118.0	CPDLC	UNICOM 122.95
------------------------	-------------------------------------	---	-------------------------	--------------------------	-------	-------------------------

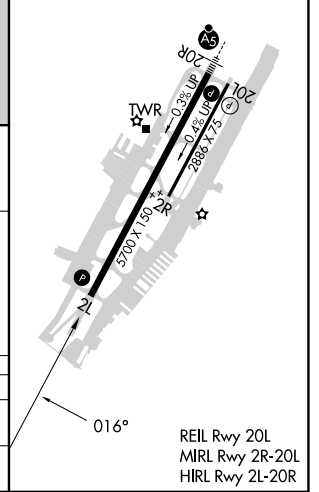
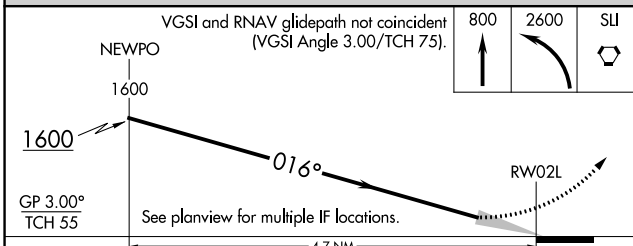


SW-3, 28 NOV 2024 to 26 DEC 2024

SW-3, 28 NOV 2024 to 26 DEC 2024



ELEV	56	D	TDZE	56
------	----	----------	------	----



CATEGORY	A	B	C	D
RNP 0.30 DA	403-1 1/8 347 (400-1 1/8)			

AUTHORIZATION REQUIRED