

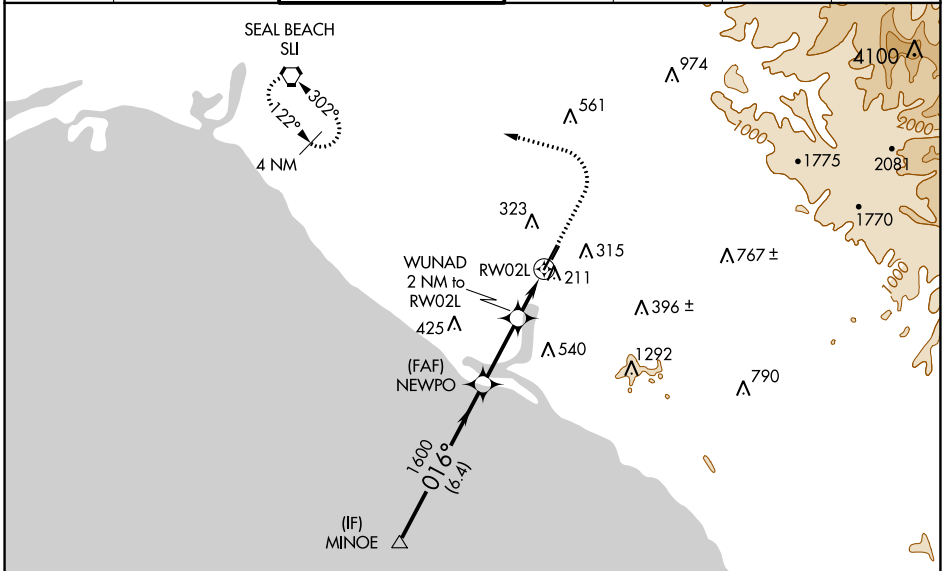
APP CRS	Rwy Idg	5700
016°	TDZE	56
	Apt Elev	56

RNAV (GPS) Y RWY 2L

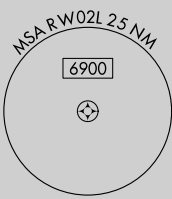
JOHN WAYNE/ORANGE COUNTY (SNA)

RNP APCH - GPS.		MISSED APPROACH: Climb to 800 then climbing left turn to 2600 direct SLI VORTAC and hold.				
Circling Rwy 20L NA at night.						

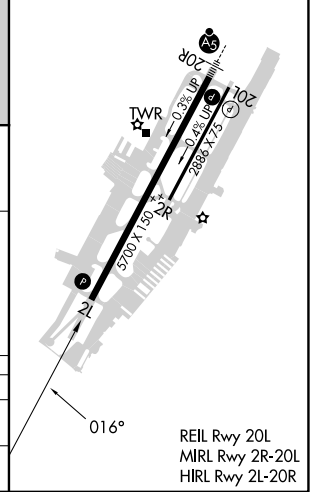
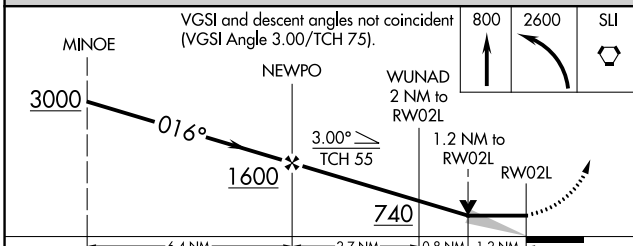
D-ATIS	SOCAL APP CON	JOHN WAYNE TOWER *	GND CON	CLNC DEL	CPDLC	UNICOM
126.0	121.3 263.1	126.8 (CTAF) 0 343.625	120.8	118.0		122.95



Procedure NA for arrivals at MINOE on V25 southeast bound.



ELEV	56	D	TDZE	56
------	----	----------	------	----



CATEGORY	A	B	C	D
LNVA MDA	520-1 464 (500-1)		520-1 $\frac{3}{8}$ 464 (500-1 $\frac{3}{8}$)	
C CIRCLING	640-1 584 (600-1)		840-2 $\frac{1}{4}$ 784 (800-2 $\frac{1}{4}$)	1160-3 1104 (1200-3)

SW-3, 28 NOV 2024 to 26 DEC 2024

SW-3, 28 NOV 2024 to 26 DEC 2024