

ATIS 132.65  
CLNC DEL 132.9  
GND CON 121.7  
SANTA BARBARA TOWER \* 119.7 (CTAF) 254.35  
SANTA BARBARA DEP CON 120.55 319.15

**TOP ALTITUDE:  
3000**

SHAFTER  
115.4 EHF  
Chan 101

GORMAN  
116.1 GMN  
Chan 108

LAKE HUGHES  
114.35 LHS  
Chan 90 (Y)

PALMDALE  
115.55 PMD  
Chan 102(Y)

FILLMORE  
112.5 FIM  
Chan 72

VAN NUYS  
113.1 VNY  
Chan 78

CAMARILLO  
115.8 CMA  
Chan 105

SANTA CATALINA  
114.15 SXC  
Chan 88(Y)

VENTURA  
116.55 VTU  
Chan 112(Y)

AVENAL  
117.1 AVE  
Chan 118

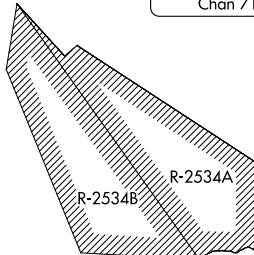
FELLOWS  
117.5 FLW  
Chan 122

SAN MARCUS  
114.9 RZS  
Chan 96

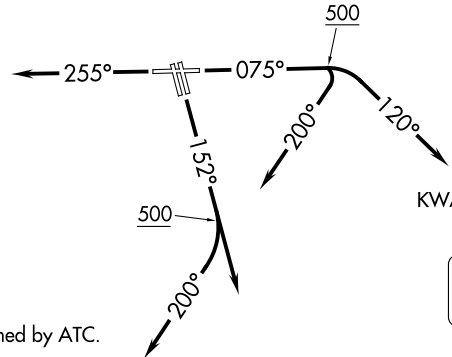
GAVIOTA  
113.8 GVO  
Chan 85

PASO ROBLES  
114.3 PRB  
Chan 90

MORRO BAY  
112.4 MQO  
Chan 71



HABUT



DEANO  
KWANG  
HENER

**TAKEOFF MINIMUMS**  
Rwys 33L/R: NA-ATC.  
Rwys 15L/R, 25: Standard.  
Rwy 7: Standard with minimum climb of 260' per NM to 1100.

NOTE: This DP to be used only when assigned by ATC.  
NOTE: RADAR required.

NOTE: Chart not to scale.

(CONTINUED ON FOLLOWING PAGE)



DEPARTURE ROUTE DESCRIPTION

SOUTH OR EAST ROUTE OF FLIGHT:

TAKEOFF RUNWAY 7: Climb heading 075° to 500, then climbing right turn on heading 120°. Thence. . . .

TAKEOFF RUNWAYS 15L/15R: Climb heading 152°. Thence. . . .

TAKEOFF RUNWAY 25: Climb heading 255°. Thence. . . .

. . . .On RADAR vectors, maintain 3000. Expect further clearance to filed altitude 5 minutes after departure.

NORTH OR WEST ROUTE OF FLIGHT:

TAKEOFF RUNWAY 7: Climb heading 075° to 500, then climbing right turn on heading 200°. Thence. . . .

TAKEOFF RUNWAYS 15L/R: Climb heading 152° to 500, then climbing right turn on heading 200°. Thence. . . .

TAKEOFF RUNWAY 25: Climb heading 255°. Thence. . . .

. . . .On RADAR vectors, maintain 3000. Expect further clearance to filed altitude 5 minutes after departure.

SW-3, 28 NOV 2024 to 26 DEC 2024

SW-3, 28 NOV 2024 to 26 DEC 2024