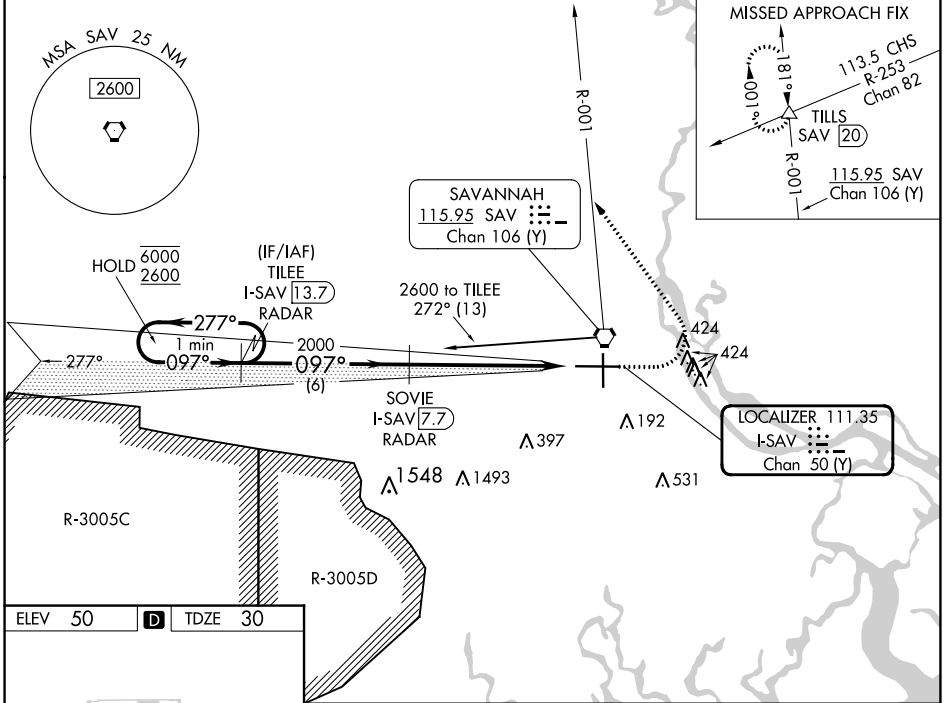


LOC I-SAV 111.35	APP CRS 097°	Rwy Idg TDZE Apt Elev	9351 30 50
Chan 50 (Y)			

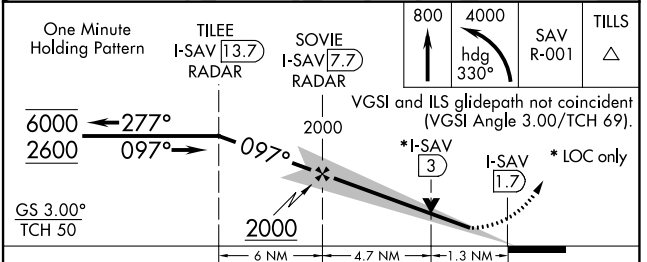
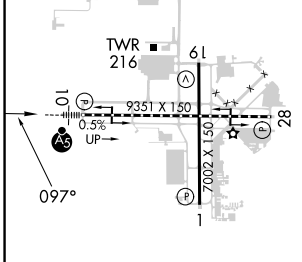
ILS or LOC RWY 10

SAVANNAH/HILTON HEAD INTL (SAV)

DME required.		MALSR		MISSED APPROACH: Climb to 800 then climbing left turn to 4000 on heading 330° and SAV VORTAC R-001° to TILLS INT/SAV 20 DME and hold.	
<p>▼ For inop ALS, increase S-LOC 10 Cat C/D visibility to 1 3/8 SM.</p> <p>▲</p>					
ATIS 123.75	SAVANNAH APP CON* 125.3 371.875	SAVANNAH TOWER* 125.975 (CTAF) 257.8	GND CON 121.9 348.6	CLNC DEL 119.55 291.775	UNICOM 122.95



ELEV 50	D	TDZE 30
---------	----------	---------



CATEGORY	A	B	C	D
S-ILS 10	230/18 200 (200-1/2)			
S-LOC 10	500/24	470 (500-1/2)	500/50	470 (500-1)
C CIRCLING	520-1	470 (500-1)	740-2 690 (700-2)	740-2 1/4 690 (700-2 1/4)

TDZ/CL Rwy 10
REIL Rws 19 and 28
HIRL Rws 1-19 and 10-28

SE-4, 28 NOV 2024 to 26 DEC 2024

SE-4, 28 NOV 2024 to 26 DEC 2024