

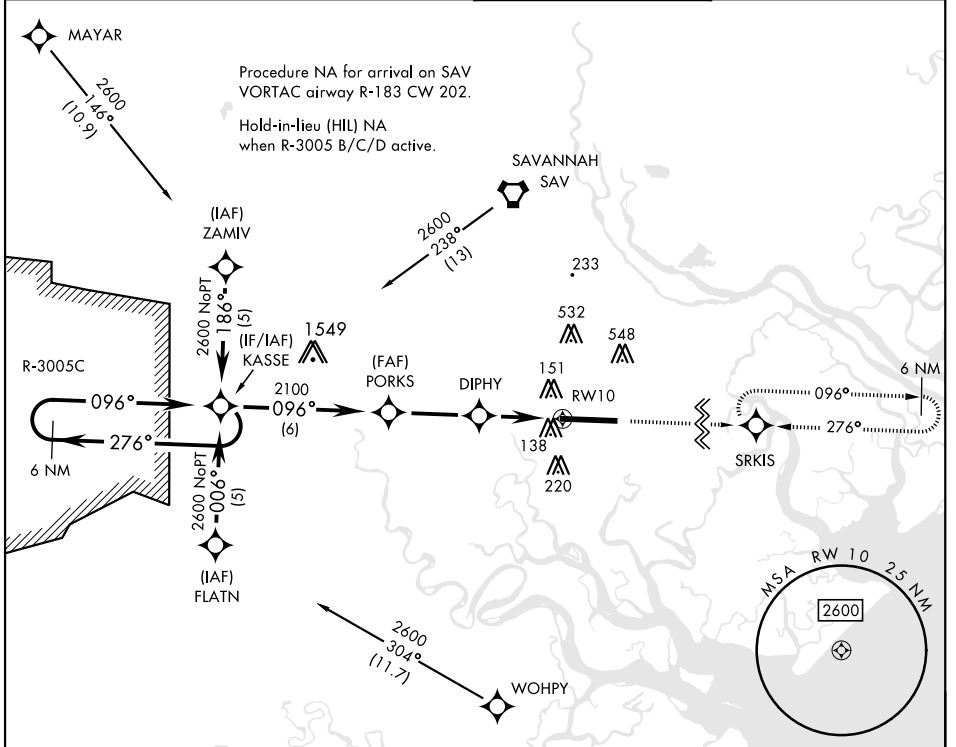
RNAV (GPS) RWY 10

| | | |
|----------|------------|--------|
| APCH CRS | Rwy ldg | 11,393 |
| 096° | TDZE | 26 |
| | Arprt Elev | 41 |

[USA]

HUNTER AAF (KSVN)

| | | | |
|--|-------------------|---|---------------|
| RNP APCH-GPS | | MISSED APPROACH: Climb to 2500 direct SRKIS and hold. | |
| RADAR required when R-3005 B/C/D active. | | | |
| *When ALS inop, increase CAT AB vis to 1 mile; CAT CD vis to 1¼ miles. **Circling not authorized N of Rwy 10-28 for CAT D. | | | |
| ATIS* | SAVANNAH APP CON* | TOWER* | GND CON* |
| 127.525 323.125 | 120.4 353.775 | 124.975 (CTAF) 0 279.575 | 121.8 291.675 |



SE-4, 28 NOV 2024 to 26 DEC 2024

SE-4, 28 NOV 2024 to 26 DEC 2024

| | | | | |
|------------|-------|-------------|------------------------|------------------------|
| 2500 | | SRKIS | | |
| ELEV 41 | | TDZE 26 | | |
| | | | | |
| CATEGORY | A | B | C | D |
| LNAV MDA* | 460-1 | 434 | (500-1) | |
| CIRCLING** | 600-1 | 559 (600-1) | 920-2½ 879 (900-2½) | 920-2¾ 879 (900-2¾) |

RNAV (GPS) RWY 10