

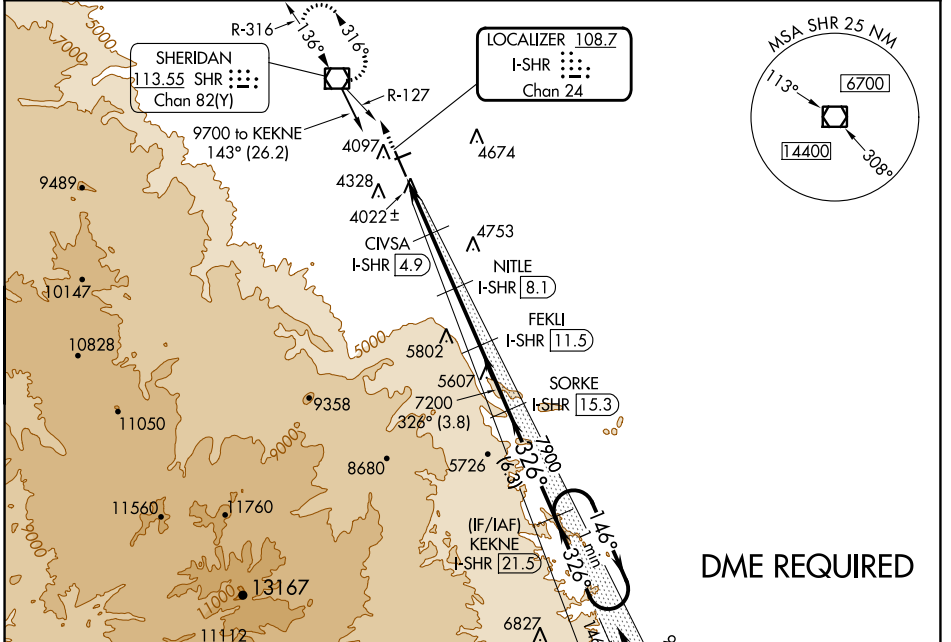
LOC/DME I-SHR 108.7 Chan 24	APP CRS 326°	Rwy Idg TDZE Apt Elev	8301 3985 4021
--	------------------------	-----------------------------	---

ILS or LOC/DME RWY 33

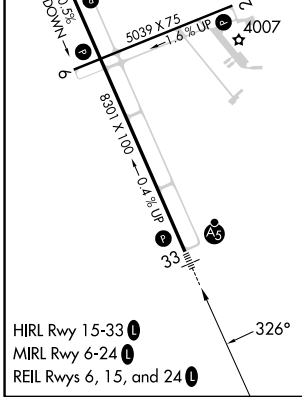
SHERIDAN COUNTY (SHR)

 When local altimeter setting not received, procedure NA. Night landing: Rwy 24 NA. For inoperative MALSR, increase S-LOC 33 Cats C and D visibility to 7/8 mile. -19°C	MALSR MISSED APPROACH: Climb to 7000 on heading 326° and on SHR VOR/DME R-127 to SHR VOR/DME and hold, continue climb-in-hold to 7000.
--	---

ASOS 135.175	SALT LAKE CENTER 127.75 351.9	UNICOM 123.0 (CTAF)
------------------------	---	-------------------------------



ELEV 4021	D	TDZE 3985
-----------	----------	-----------



7000	SHR	SHR	Use I-SHR DME when on the localizer course.
↑	R-127		
hdg 326°			
		FEKLI I-SHR 11.5	SORKE I-SHR 15.3
			KEKNE I-SHR 21.5
			One Minute Holding Pattern
*LOC only.	CIVSA I-SHR 4.9	NITLE I-SHR 8.1	
	*I-SHR 2.3		
	I-SHR 1.5		
		7200	
		6100*	
		7200	
		326°	146°
		7900	9100
			←326°
			GS 3.00°
			TCH 55
	0.8	2.6 NM	3.2 NM
		3.4 NM	6.3 NM

CATEGORY	A	B	C	D
S-ILS 33		4185-1/2	200 (200-1/2)	
S-LOC 33		4280-1/2	295 (300-1/2)	
C CIRCLING	4600-1 579 (600-1)	4640-1 619 (700-1)	4860-2 1/2 839 (900-2 1/2)	5220-3 1199 (1200-3)

NW-1, 28 NOV 2024 to 26 DEC 2024

NW-1, 28 NOV 2024 to 26 DEC 2024