

# HI-TACAN Z RWY 15

TACAN BAD Chan <b>105</b>	APCH CRS <b>158°</b>	Rwy Ldg THRE <b>163</b> Arpt Elev <b>165</b>
------------------------------	-------------------------	--

[USAF]

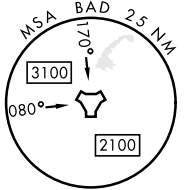
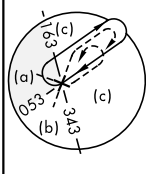
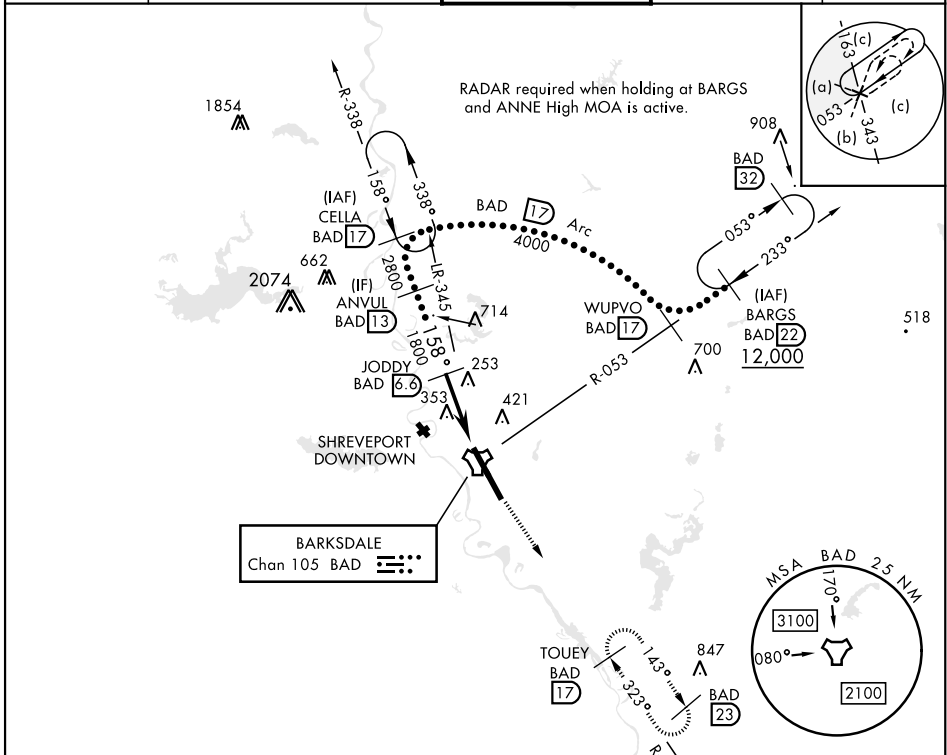
BARKSDALE AFB (KBAD)

\* When ALS inop, increase CAT CDE vis to 1 3/4 miles.  
 \*\* Circling not authorized W of Rwy.



MISSED APPROACH: Climb to 3000  
 via BAD R-143 direct TOUEY and hold.

ATIS <b>307.025</b>	SHREVEPORT APP CON 320°-152° <b>123.75 360.725</b> 153°-319° <b>119.9 335.55</b>	TOWER* <b>128.25 278.3</b>	GND CON <b>121.8 253.5</b>	ASR
------------------------	--	-------------------------------	-------------------------------	-----



EMERG SAFE ALT 100 NM 3300

CATEGORY	C	D	E
	S-15*	800-1 3/8 637 (700-1 3/8)	
	CIRCLING**	NOT AUTHORIZED	800-2 635 (700-2) 800-2 1/4 635 (700-2 1/4)

ELEV	165	THRE	163
194 A	247 A	315 A	288 A
339 A	289 A	255 A	247 A
TWR 324			33 A

# HI-TACAN Z RWY 15

SC-4, 28 NOV 2024 to 26 DEC 2024

SC-4, 28 NOV 2024 to 26 DEC 2024