

BOSSIER CITY, LOUISIANA

HI-VOR/DME Z RWY 33

VORTAC EMG 111.2 Chan 49	APCH CRS 323°	Rwy Idg 11,758 THRE 161 Arprt Elev 165
--	-------------------------	---

[USAF]

BARKSDALE AFB (KBAD)

DME or RADAR required.

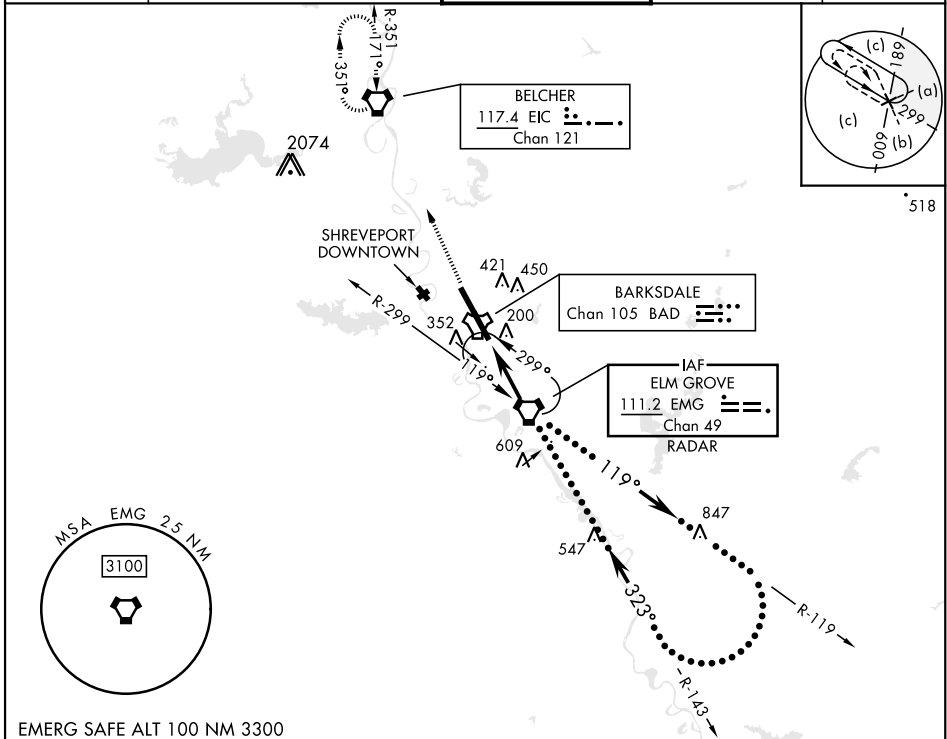
- * When ALS inop, increase CAT CDE vis to 1 $\frac{3}{8}$ miles.
- ** Circling not authorized W of Rwy.

ALSF-1



MISSED APPROACH: Climb to 3100 direct to EIC VORTAC and hold.

ATIS 307.025	SHREVEPORT APP CON 320°-152° 123.75 360.725 153°-319° 119.9 335.55	TOWER★ 128.25 278.3	GND CON 121.8 253.5	ASR
------------------------	--	-------------------------------	-------------------------------	-----



SC-4, 28 NOV 2024 to 26 DEC 2024

SC-4, 28 NOV 2024 to 26 DEC 2024

EMERG SAFE ALT 100 NM 3300

3100	EIC	ELEV 165	THRE 161
CATEGORY	C	D	E
S-33*	640/50	479 (500-1)	
CIRCLING**	NOT AUTHORIZED	760-2 595 (600-2)	780-2 $\frac{1}{4}$ 615 (700-2 $\frac{1}{4}$)
HIRL Rwy 15-33			
FAF to MAP 5.4 NM			
Knots	120	140	160 180 200
Min:Sec	2:42	2:19	2:01 1:48 1:37

BOSSIER CITY, LOUISIANA

32°30'N-93°40'W

BARKSDALE AFB (KBAD)

Amdt 5 25JUN15

HI-VOR/DME Z RWY 33