

LOC/DME I-SUX <b>109.3</b> Chan <b>30</b>	APP CRS <b>313°</b>	Rwy Idg TDZE <b>9002</b> <b>1096</b>	Apt Elev <b>1098</b>
---	------------------------	--	-------------------------

# ILS or LOC RWY 31

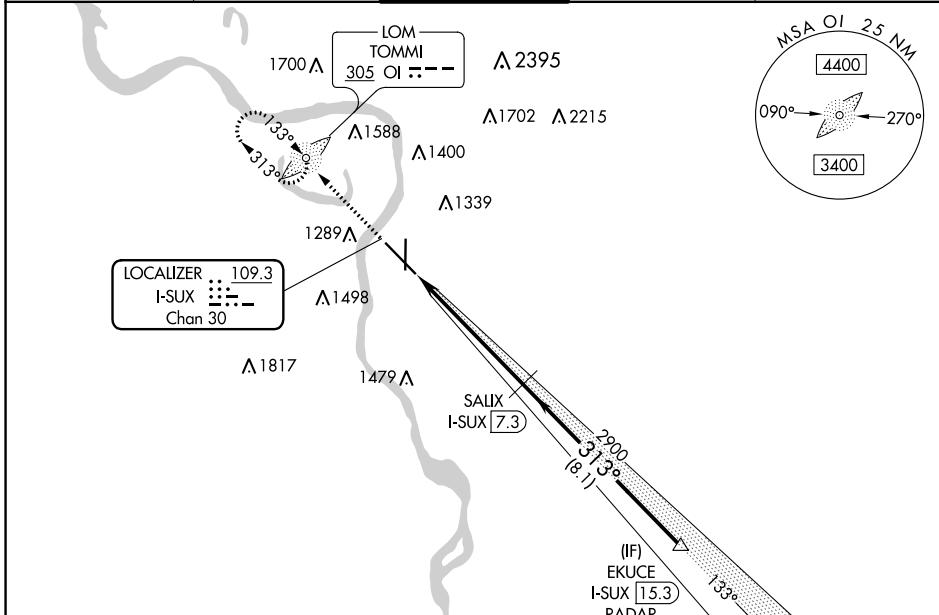
SIoux GATEWAY/BRIG GENERAL BUD DAY FLD (SUX)

ADF required. DME required for LOC only. RADAR required for procedure entry.

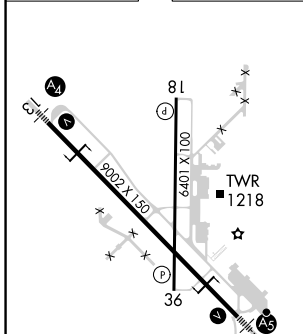
**⚠** Autopilot coupled approach NA below 2025 MSL. For inop ALS, increase S-ILS 31 Cat E visibility to RVR 4000 and S-LOC 31 Cat E to 1 1/2 SM. \*RVR 1800 authorized with use of FD or AP or HUD to DA.

MALSR MISSED APPROACH: Climb to 3100 direct TOMMI LOM and hold, continue climb-in-hold to 3100.

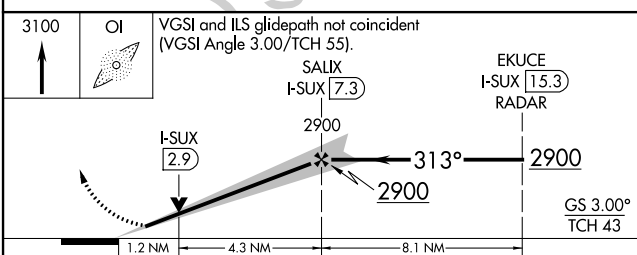
ATIS <b>119.45 270.8</b>	SIoux CITY APP CON * <b>124.6 307.0</b>	SIoux CITY TOWER * <b>118.7 (CTAF) 0 254.3</b>	GND CON <b>121.9 348.6</b>	UNICOM <b>122.95</b>
-----------------------------	--	---	-------------------------------	-------------------------



ELEV 1098	<b>D</b>	TDZE 1096
-----------	----------	-----------



REIL Rwy 18 <b>1</b>	HIRL Rwy 13-31 <b>1</b>	MIRL Rwy 18-36 <b>1</b>	313° 5.5 NM from FAF		
FAF to MAP 5.5 NM					
Knots	60	90	120	150	180
Min:Sec	5:30	3:40	2:45	2:12	1:50



CATEGORY	A	B	C	D	E
S-ILS 31*	1296/24 200 (200-1/2)				
S-LOC 31	1540/24	444 (500-1/2)	1540/45	444 (500-3/8)	
<b>C</b> CIRCLING	1640-1 542 (600-1)	1700-1 602 (700-1)	1700-1 1/4 602 (700-1 1/4)	1860-2 1/2 762 (800-2 1/2)	1940-3 842 (900-3)