

WAAS CH <b>86542</b> <b>W27B</b>	APP CRS <b>274°</b>	Rwy Idg <b>4300</b> TDZE <b>788</b> Apt Elev <b>798</b>
--	------------------------	---

# RNAV (GPS) RWY 27R

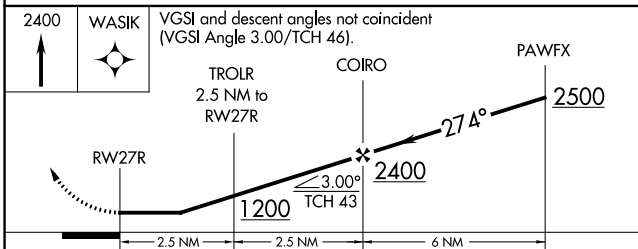
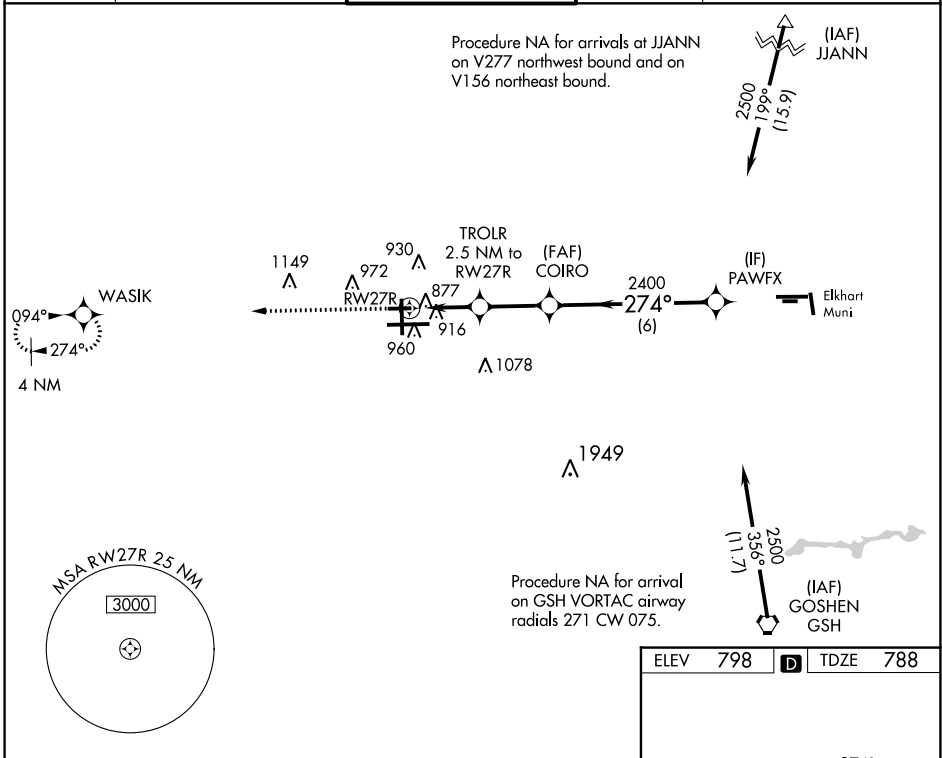
SOUTH BEND INTL (SBN)

RNP APCH - GPS.

▼ Rwy 27 helicopter visibility reduction below 1 SM NA. Circling  
 ▲ Rwy 27R NA at night. Straight-in Rwy 27R NA at night.

MISSED APPROACH: Climb to 2400 direct WASIK and hold.

ATIS <b>120.675</b>	SOUTH BEND APP CON* <b>118.55 257.8</b>	SOUTH BEND TOWER* <b>135.675 (CTAF) 0 257.8</b>	GND CON <b>121.7</b>	CLNC DEL <b>121.9</b>
------------------------	--	--	-------------------------	--------------------------



CATEGORY	A	B	C	D
LP MDA	1140-1		352 (400-1)	
LNAV MDA	1180-1	392 (400-1)	1180-1½	392 (400-1½)
◻ CIRCLING	1280-1	482 (500-1)	1440-1¾ 642 (700-1¾)	1500-2¼ 702 (800-2¼)

ELEV 798	TDZE 788
----------	----------

HIRL Rwy 9R-27L 0  
 MIRL Rwy 18-36 0  
 MIRL Rwy 9L-27R 0

EC-2, 28 NOV 2024 to 26 DEC 2024

EC-2, 28 NOV 2024 to 26 DEC 2024