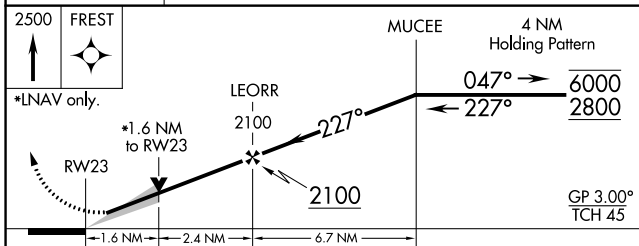
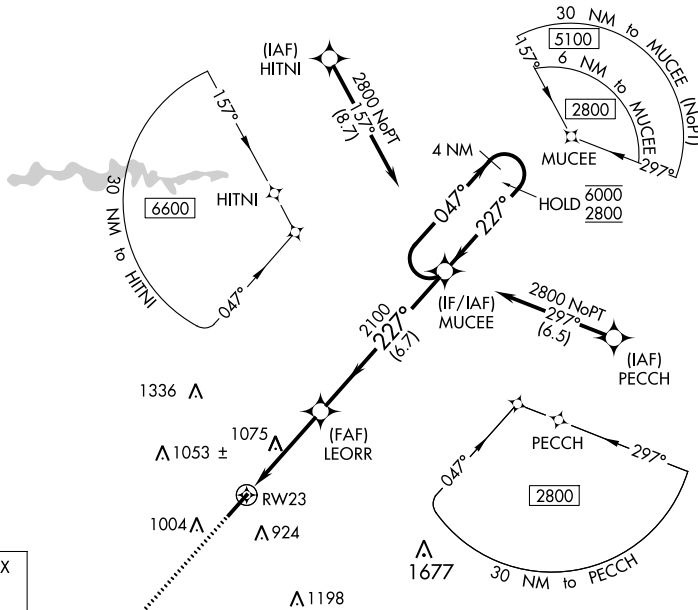


WAAS CH 65926 W23A	APP CRS 227°	Rwy Idg TDZE Apt Elev	5452 801 802
----------------------------------------	------------------------	-----------------------------	-----------------------------------------

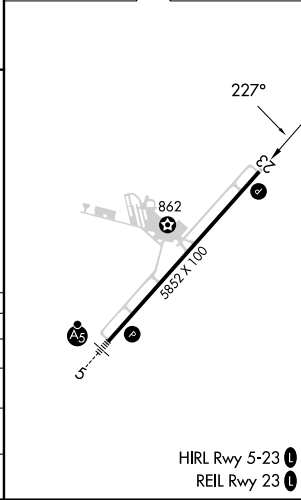
RNAV (GPS) RWY 23

SPARTANBURG DOWNTOWN MEML/SIMPSON FLD (SPA)

RNP APCH.		MISSED APPROACH: Climb to 2500 direct FREST and hold.	
<p>▼ For uncompensated Baro-VNAV systems, LNAV/VNAV NA below -16°C or above 54°C.</p>			
AWOS-3 133,925	GREER APP CON * 119.4 350.2	CLNC DEL 120.55	UNICOM 123.0 (CTAF) 1



ELEV 802	D TDZE 801
----------	-------------------



CATEGORY	A	B	C	D
LPV DA		1001-3/4	200 (200-3/4)	
LNAV/VNAV DA		1090-7/8	289 (300-7/8)	
LNAV MDA	1340-1	539 (600-1)	1340-1 1/2	539 (600-1 1/2)
C CIRCLING	1340-1	538 (600-1)	1380-1 1/2 578 (600-1 1/2)	1420-2 618 (700-2)

HIRL Rwy 5-23 **1**
REIL Rwy 23 **1**

SE-2, 28 NOV 2024 to 26 DEC 2024

SE-2, 28 NOV 2024 to 26 DEC 2024