

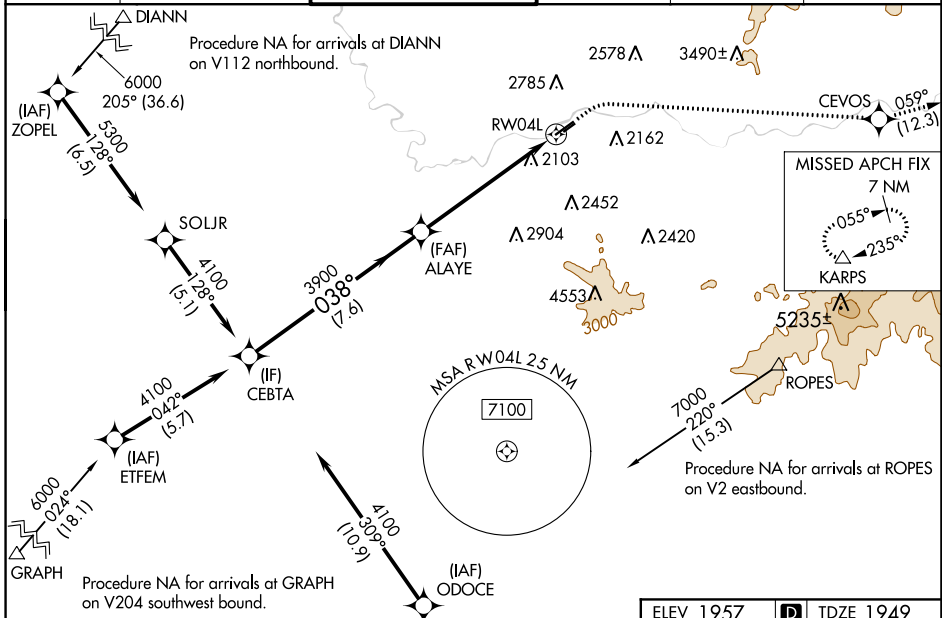
WAAS CH 65931 W04A	APP CRS 038°	Rwy Idg TDZE Apt Elev	4499 1949 1957
--	------------------------	-----------------------------	---

RNAV (GPS) RWY 4L

FELTS FLD (S'F'F)

RNP APCH - GPS.		<p>MISSED APPROACH: Climb to 2850 then climbing right turn to 8000 direct CEVOS and on track 059° to KARPS and hold, continue climb-in-hold to 8000. * LPV missed approach requires minimum climb of 330 feet per NM to 5400.</p>	
<p>⚠ Circling to Rwy 22L NA at night. Circling NA northwest of Rwy 4L-22R. Rwy 4L helicopter visibility reduction below 3/4 SM NA. For uncompensated Baro-VNAV systems, LNAV/VNAV NA below -18°C or above 54°C.</p> <p>⚠ -16°C</p>			

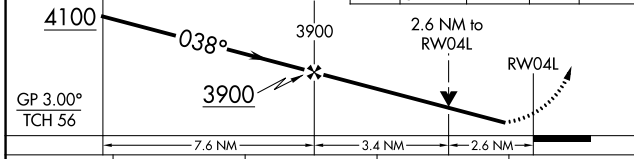
ATIS 120.55	SPOKANE APP CON 133.35 263.0	FELTS TOWER * 132.5 (CTAF) 239.025	GND CON 121.7	CLNC DEL 121.7	UNICOM 122.95
-----------------------	--	--	-------------------------	--------------------------	-------------------------



NW-1, 28 NOV 2024 to 26 DEC 2024

NW-1, 28 NOV 2024 to 26 DEC 2024

VGSi and RNAV glidepath not coincident (VGSi Angle 3.00/TCH 50). CEBTA		2850	8000	CEVOS	tr 059°	KARPS



ELEV 1957	D TDZE 1949
-----------	--------------------

CATEGORY	A	B	C	D
LPV DA*		2203-3/4	254 (300-3/4)	
LPV DA		2529-1 5/8	580 (600-1 5/8)	
LNAV/VNAV DA		2779-2 1/2	830 (900-2 1/2)	
LNAV MDA	2820-1 871 (900-1)	2820-1 1/4 871 (900-1 1/4)	2820-2 1/2 871 (900-2 1/2)	871 (900-2 1/2)
CIRCLING	2820-1 1/4	863 (900-1 1/4)	3100-3 1143 (1200-3)	3360-3 1403 (1500-3)

