

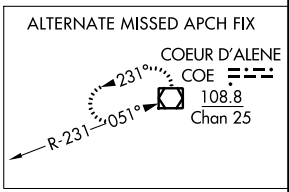
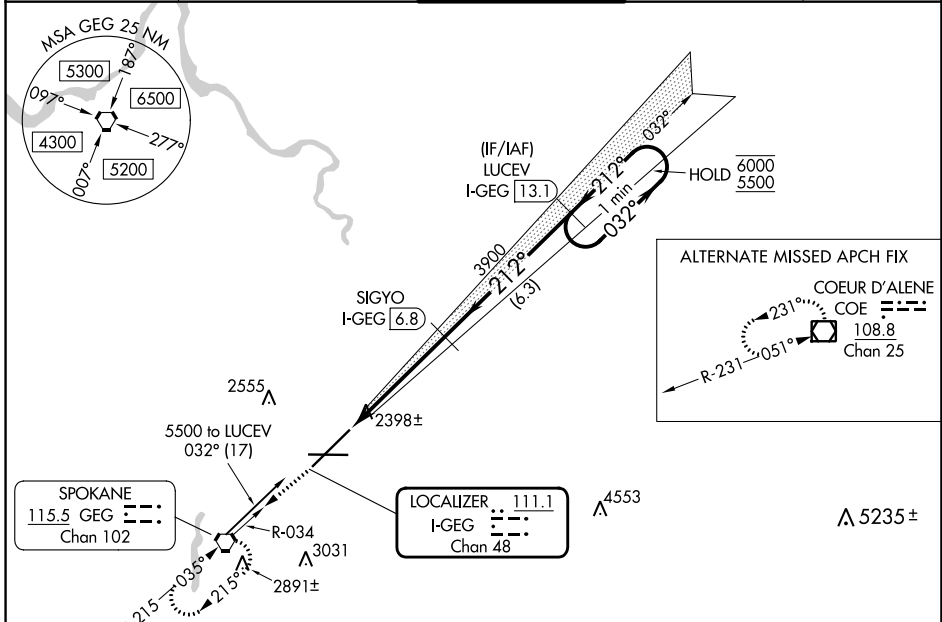
LOC/DME I-GEG <b>111.1</b> Chan <b>48</b>	APP CRS <b>212°</b>	Rwy Idg <b>11002</b> TDZE <b>2346</b> Apt Elev <b>2385</b>
---	------------------------	--

# ILS RWY 21 (CAT II & III)

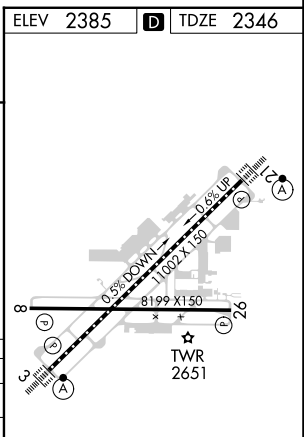
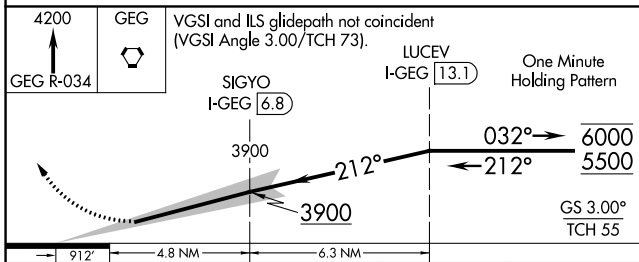
SPOKANE INTL (GEG)

DME required.	ALSIF-2 	MISSED APPROACH: Climb to 4200 on GEG VORTAC R-034 to GEG VORTAC and hold, continue climb-in-hold to 4200.
CAT II: RVR 1000 authorized with specific OPSPEC, MSPEC, or LOA approval and use of autoland or HUD to touchdown.		

ATIS <b>124.325 254.375</b>	SPOKANE APP CON <b>123.75 282.25</b> (205°-025°) <b>133.35 263.0</b> (026°-204°)	SPOKANE TOWER <b>118.3 278.3</b>	GND CON <b>121.9 348.6</b>	CLNC DEL <b>127.55</b>
--------------------------------	--	-------------------------------------	-------------------------------	---------------------------



ELEV 2385	<b>D</b> TDZE 2346
-----------	--------------------



CATEGORY	A	B	C	D
S-ILS 21	CAT II RA 147/12 100 DA 2446			
S-ILS 21	CAT III RVR 03			

**CATEGORY II & III ILS - SPECIAL AIRCREW & AIRCRAFT CERTIFICATION REQUIRED**

TDZ/CL Rwy 3 and 21  
REIL Rwy 8 and 26  
HIRL Rwy 3-21  
MIRL Rwy 8-26

NW-1, 28 NOV 2024 to 26 DEC 2024

NW-1, 28 NOV 2024 to 26 DEC 2024