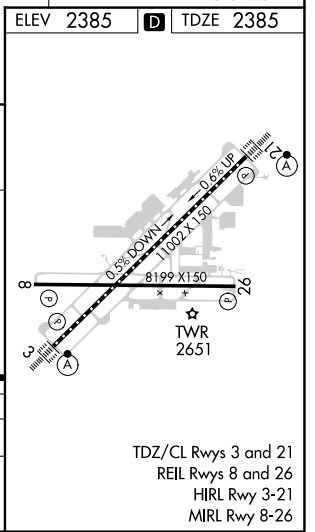
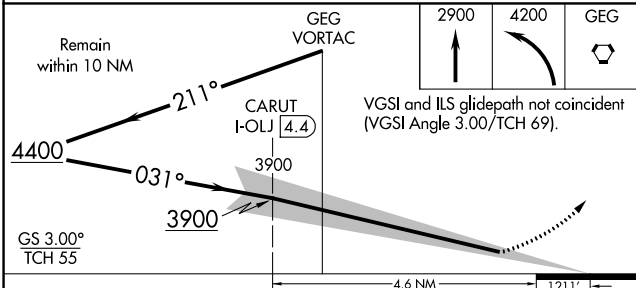
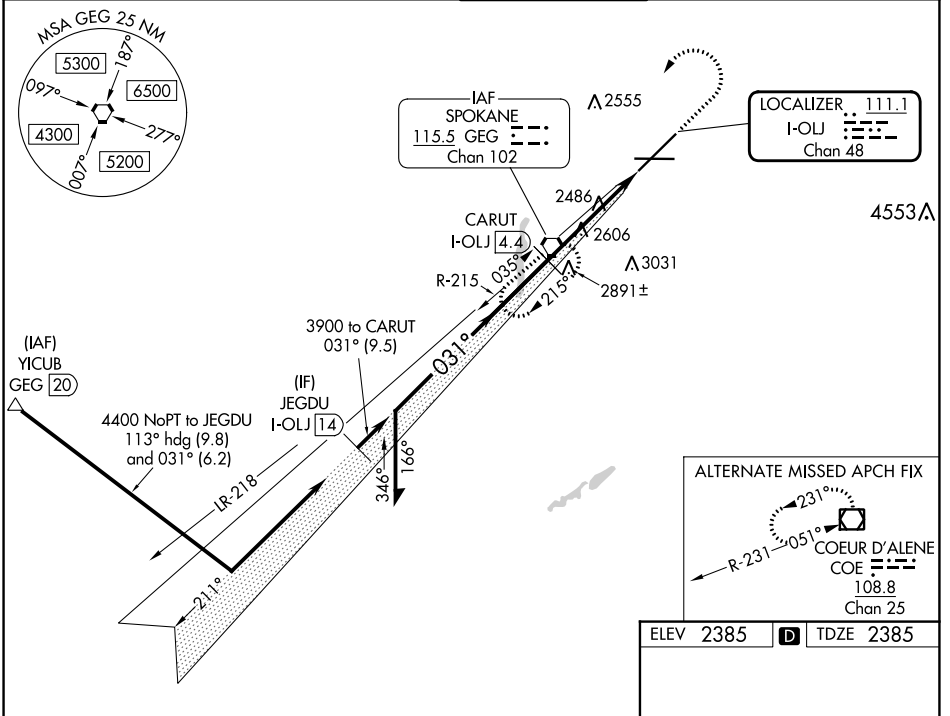


| | | | |
|--|------------------------|-----------------------------|--|
| LOC/DME I-OLJ 111.1 Chan 48 | APP CRS 031° | Rwy Idg TDZE Apt Elev | 11002 2385 2385 |
|--|------------------------|-----------------------------|--|

ILS RWY 3 (SA CAT I)

SPOKANE INTL (GEG)

| | | | | |
|--|--|---|---|---------------------------------------|
| <p>Requires specific OPSPEC, MSPEC, or LOA approval.</p> | <p>ALSF-2</p> | <p>MISSED APPROACH: Climb to 2900 then climbing left turn to 4200 direct GEG VORTAC and hold, continue climb-in-hold to 4200.</p> | | |
| | <p>ATIS 124.325 254.375</p> | <p>SPOKANE APP CON 123.75 282.25 (205°-025°) 133.35 263.0 (026°-204°)</p> | <p>SPOKANE TOWER 118.3 278.3</p> | <p>GND CON 121.9 348.6</p> |



| | | | | |
|--|-----------------------|---|---|---|
| CATEGORY | A | B | C | D |
| S-ILS 3 | RA 154/14 150 DA 2535 | | | |
| SA CATEGORY I ILS - SPECIAL AIRCREW & AIRCRAFT CERTIFICATION REQUIRED | | | | |

NW-1, 28 NOV 2024 to 26 DEC 2024

NW-1, 28 NOV 2024 to 26 DEC 2024