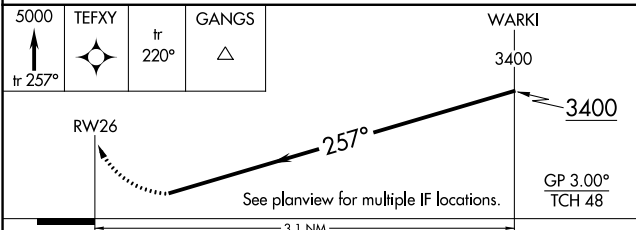
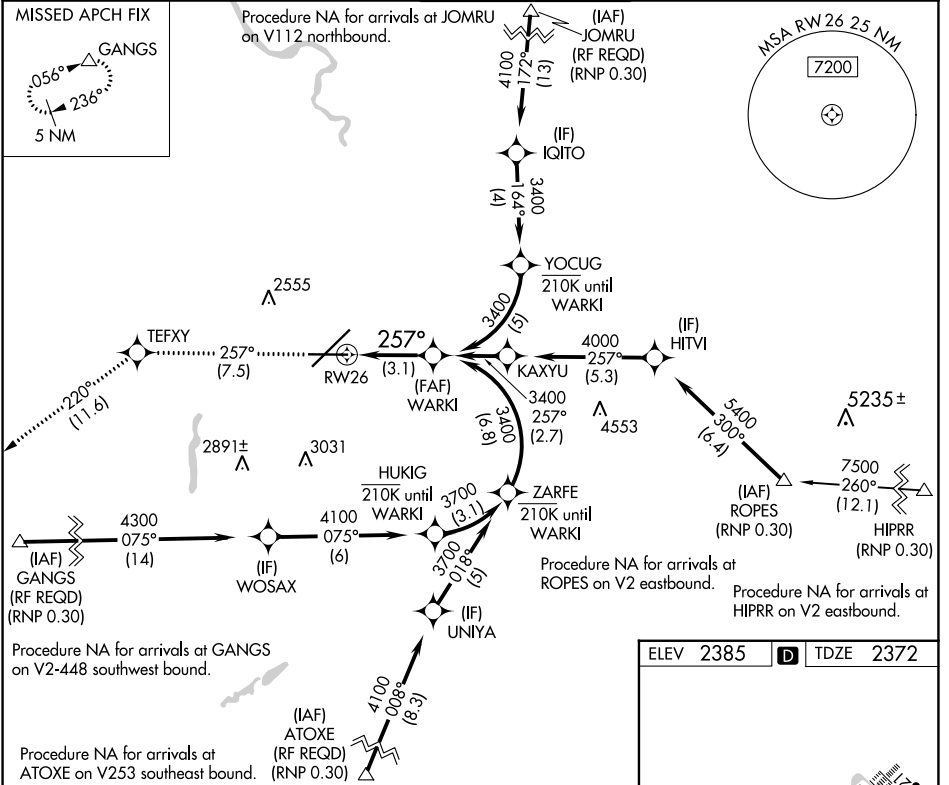


APP CRS	Rwy Idg	8199
257°	TDZE	2372
	Apt Elev	2385

RNAV (RNP) Z RWY 26

SPOKANE INTL (GEG)

RNP AR APCH.		SPOKANE APP CON		SPOKANE TOWER		GND CON		CLNC DEL	
<p>▼ For uncompensated Baro-VNAV systems, procedure NA below -17°C or above 54°C.</p>		<p>123.75 282.25 (205°-025°) 133.35 263.0 (026°-204°)</p>		<p>118.3 278.3</p>		<p>121.9 348.6</p>		<p>127.55</p>	
<p>ATIS 124.325 254.375</p>		<p>MISSED APPROACH FIX</p>		<p>MISSED APPROACH: Climb to 5000 on track 257° to TEFXY and on track 220° to GANGS and hold.</p>					



ELEV 2385	D	TDZE 2372
-----------	----------	-----------

TDZ/CL Rws 3 and 21
REIL Rws 8 and 26
HIRL Rwy 3-21
MIRL Rwy 8-26

CATEGORY	A	B	C	D
RNP 0.11 DA		2745-1¼	373 (400-1¼)	
RNP 0.30 DA		2795-1¾	423 (500-1¾)	

AUTHORIZATION REQUIRED

NW-1, 28 NOV 2024 to 26 DEC 2024

NW-1, 28 NOV 2024 to 26 DEC 2024