

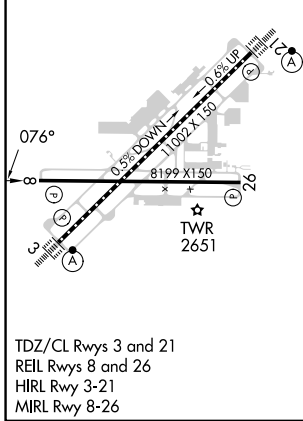
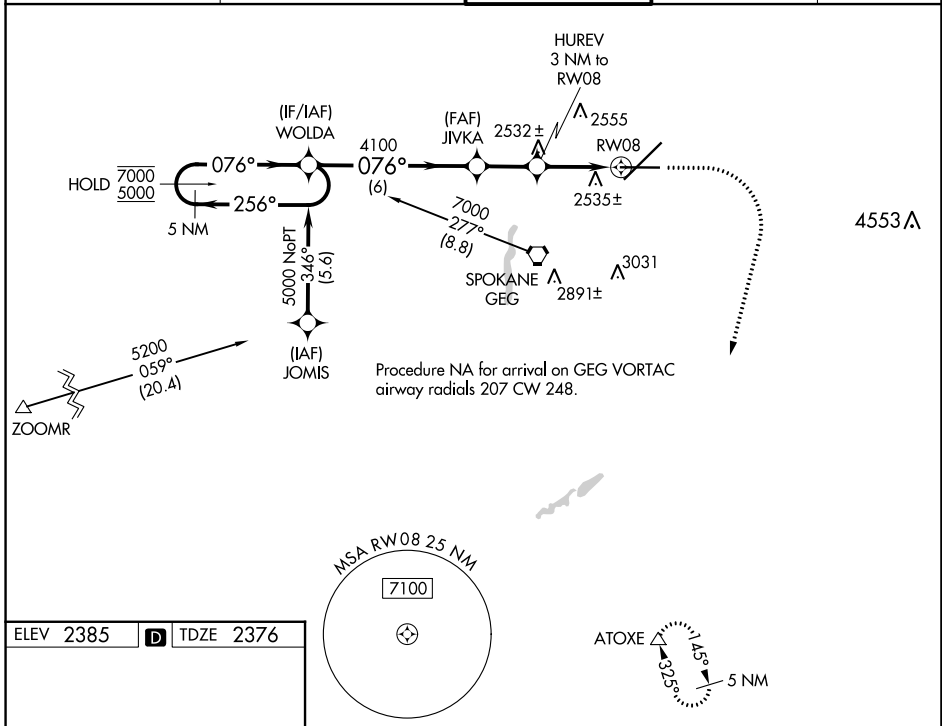
WAAS CH 48801 W08A	APP CRS 076°	Rwy Idg TDZE Apt Elev	8199 2376 2385
--	------------------------	-----------------------------	---

RNAV (GPS) Y RWY 8

SPOKANE INTL (GEG)

RNP APCH.	MISSED APPROACH: Climb to 2900, then climbing right turn to 6000 direct ATOXE and hold.
▼ For uncompensated Baro-VNAV systems, LNAV/VNAV NA below -18°C or above 52°C.	

ATIS 124.325 254.375	SPOKANE APP CON 123.75 282.25 (205°-025°) 133.35 263.0 (026°-204°)	SPOKANE TOWER 118.3 278.3	GND CON 121.9 348.6	CLNC DEL 127.55
--------------------------------	--	-------------------------------------	-------------------------------	---------------------------



ELEV 2385	D	TDZE 2376	VGSi and RNAV glidepath not coincident (VGSi Angle 3.00/TCH 45).		
5 NM Holding Pattern WOLDA		JIVKA	2900	6000	ATOXE
7000	5000	4100	3400	HUREV 3 NM to RWY 08 1.2 NM to RWY 08	
GP 3.00°		TCH 60			
		6 NM	2.1 NM	1.8 NM	1.2
CATEGORY	A	B	C	D	
LPV DA	2576-3/4		200 (200-3/4)		
LNAV/VNAV DA	2834-1 1/2		458 (500-1 1/2)		
LNAV MDA	2800-1	424 (500-1)	2800-1 1/4		424 (500-1 1/4)

NW-1, 28 NOV 2024 to 26 DEC 2024

NW-1, 28 NOV 2024 to 26 DEC 2024