

ATIS
124.325 254.375
CLNC DEL
127.55
GND CON
121.9 348.6
SPOKANE TOWER
118.3 278.3

**TOP ALTITUDE:
6000**

TAKEOFF MINIMUMS

Rwys 3, 8: Standard with minimum climb of 320' per NM to 5300.
Rwys 21, 26: Standard with minimum climb of 250' per NM to 5200.

COEUR D'ALENE
108.8 COE
Chan 25

MULLAN PASS
117.8 MLP
Chan 125

PULLMAN
117.15 PUW
Chan 118(Y)

NEZ PERCE
114.45 MQG
Chan 91(Y)

EAST DEPARTURE
133.35 263.0
(026°-204°)

PASCO
113.75 PSC
Chan 84(Y)

WALLA WALLA
116.4 ALW
Chan 111

PENDLETON
114.7 PDT
Chan 94

SPOKANE
115.5 GEG
Chan 102
5200 (Lost Comm.)

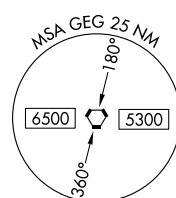
EPHRATA
112.6 EPH
Chan 73

MOSES LAKE
115.0 MWH
Chan 97

WEST DEPARTURE
123.75 282.25
(205°-025°)

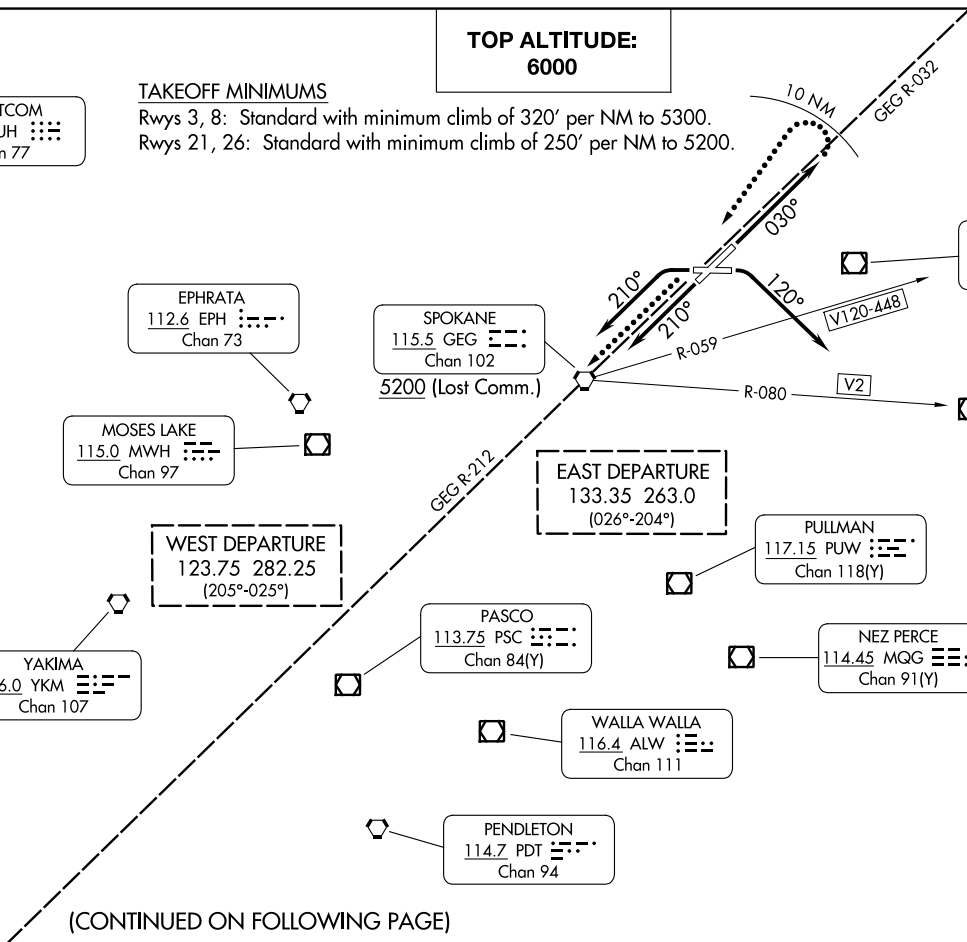
YAKIMA
116.0 YKM
Chan 107

WHATCOM
113.0 HUH
Chan 77



NOTE: Chart not to scale.

(CONTINUED ON FOLLOWING PAGE)





DEPARTURE ROUTE DESCRIPTION

TAKEOFF RUNWAY 3: Climb on heading 030° (or ATC assigned heading) for vectors to assigned route/fix, thence

TAKEOFF RUNWAY 8: Climbing right turn heading 120° (or ATC assigned heading) for vectors to assigned route/fix, thence

TAKEOFF RUNWAY 21: Climb on heading 210° (or ATC assigned heading) for vectors to assigned route/fix, thence

TAKEOFF RUNWAY 26: Climbing left turn heading 210° (or ATC assigned heading) for vectors to assigned route/fix, thence

. . . . maintain 6000 or assigned higher altitude, expect filed altitude/flight level 10 minutes after departure.

LOST COMMUNICATIONS

Climb direct GEG VORTAC before proceeding on course.

Aircraft northeastbound V120-448 and eastbound V2: Climb direct GEG VORTAC, cross GEG VORTAC at or above 5200.

Aircraft departing Rwy 3: If not in contact with ATC within 10 NM after takeoff, turn left direct GEG VORTAC, cross GEG VORTAC at or above 5200, thence on assigned route/fix.

NW-1, 28 NOV 2024 to 26 DEC 2024

NW-1, 28 NOV 2024 to 26 DEC 2024