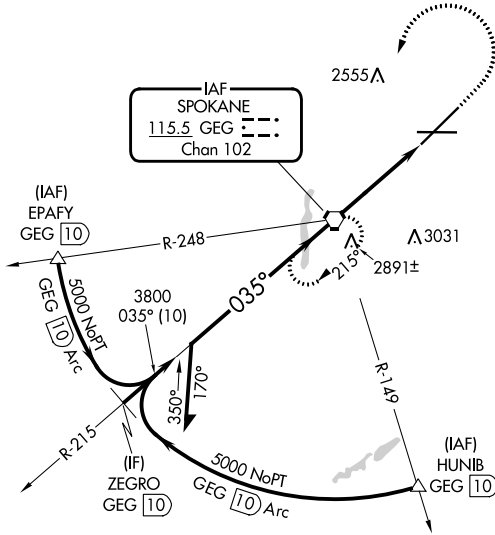


VORTAC GEG 115.5 Chan 102	APP CRS 035°	Rwy Idg 11002 TDZE 2385 Aprt Elev 2385
--	------------------------	---

VOR RWY 3

SPOKANE INTL (GEG)

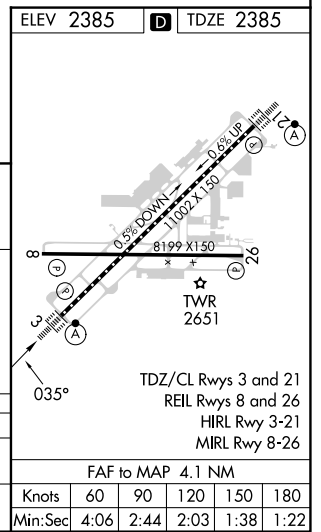
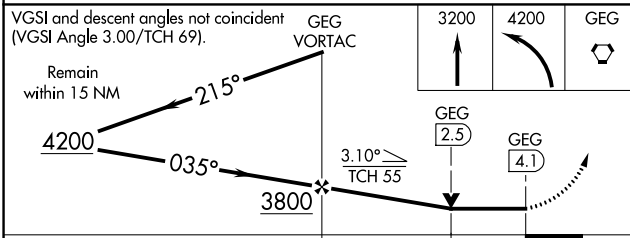
<p>⚠ Circling NA for Cat E southeast of Rwy 3-21. For inop ALS, increase S-3 Cat E visibility to 1 1/4 SM.</p>	ALS-2	MISSED APPROACH: Climb to 3200 then climbing left turn to 4200 direct GEG VORTAC and hold, continue climb-in-hold to 4200.		
	<p>ATIS 124.325 254.375</p>	<p>SPOKANE APP CON 123.75 282.25 (205°-025°) 133.35 263.0 (026°-204°)</p>	<p>SPOKANE TOWER 118.3 278.3</p>	<p>GND CON 121.9 348.6</p>



NW-1, 28 NOV 2024 to 26 DEC 2024

NW-1, 28 NOV 2024 to 26 DEC 2024

ELEV 2385	D TDZE 2385
-----------	--------------------



CATEGORY	A	B	C	D	E
S-3	2980/24	595 (600-1/2)	2980-1 1/4	595 (600-1 1/4)	
C CIRCLING	2980-1	595 (600-1)	3180-2 1/4 795 (800-2 1/4)	3380-3	995 (1000-3)