

# ZOOMR TWO ARRIVAL

AL-403 (FAA)

SPOKANE, WASHINGTON

NW-1, 28 NOV 2024 to 26 DEC 2024

## ARRIVAL ROUTE DESCRIPTION

**EPHRATA TRANSITION (EPH.ZOOMR2):** From over EPH VORTAC on EPH R-065 to ZOOMR. Thence, . . .

**MOSES LAKE TRANSITION (MWH.ZOOMR2):** From over MWH VOR/DME on MWH R-054 to ZOOMR. Thence, . . .

. . . From over ZOOMR on SPOKANE VORTAC (GEG) R-239 to GANGS. Expect RADAR vectors to final approach course.

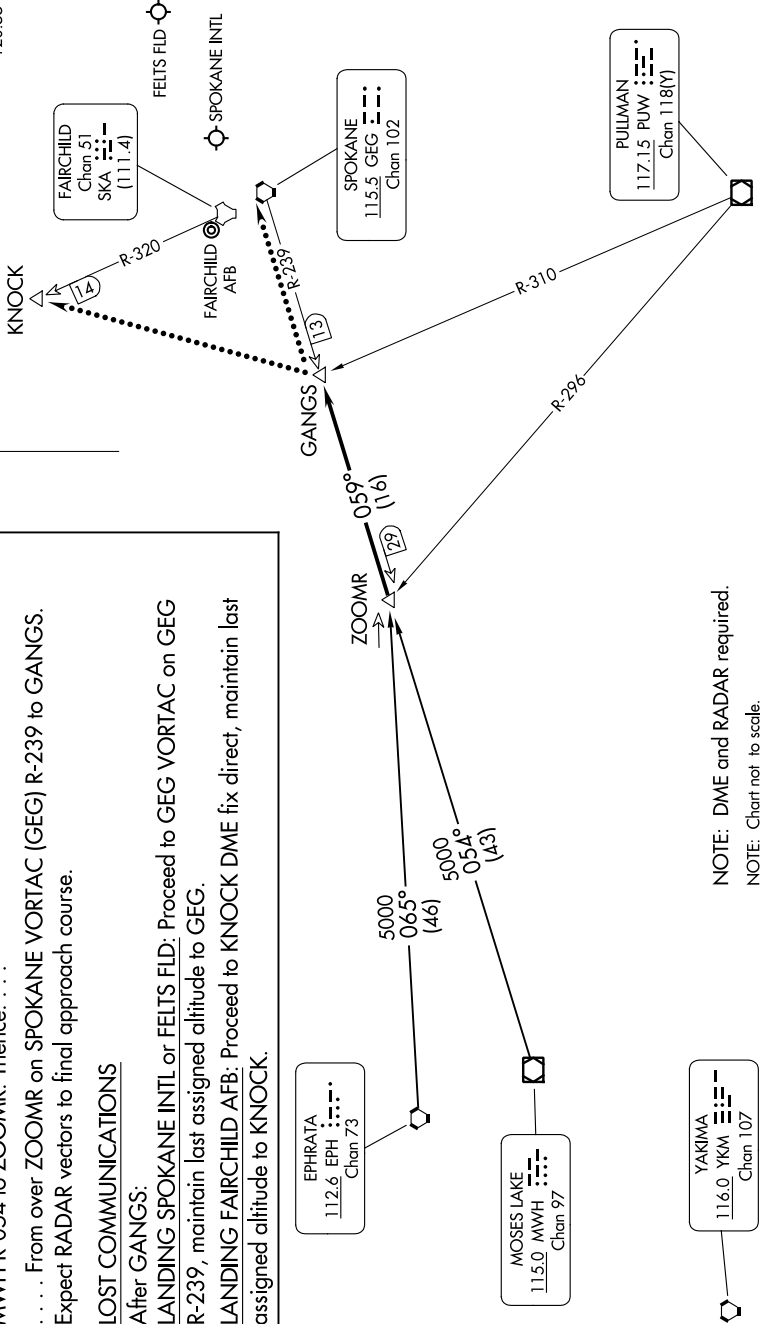
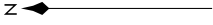
## LOST COMMUNICATIONS

After GANGS:

**LANDING SPOKANE INTL or FELTS FLD:** Proceed to GEG VORTAC on GEG R-239, maintain last assigned altitude to GEG.

**LANDING FAIRCHILD AFB:** Proceed to KNOCK DME fix direct, maintain last assigned altitude to KNOCK.

SPOKANE APP CON  
123.75 282.25  
GEG ATIS  
124.325 254.375  
KSKA ATIS  
257.625  
SFF ATIS  
120.55



NOTE: DME and RADAR required.  
NOTE: Chart not to scale.

# ZOOMR TWO ARRIVAL

SPOKANE, WASHINGTON

NW-1, 28 NOV 2024 to 26 DEC 2024