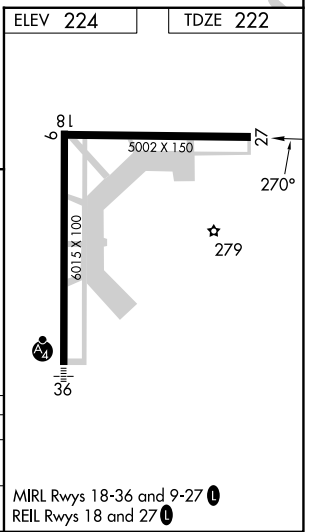
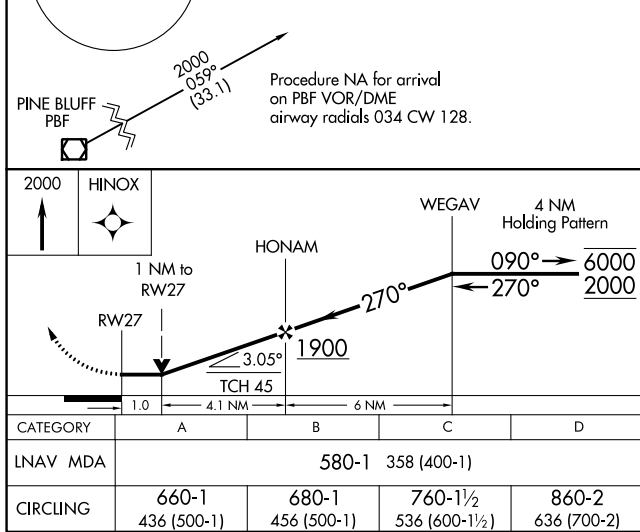
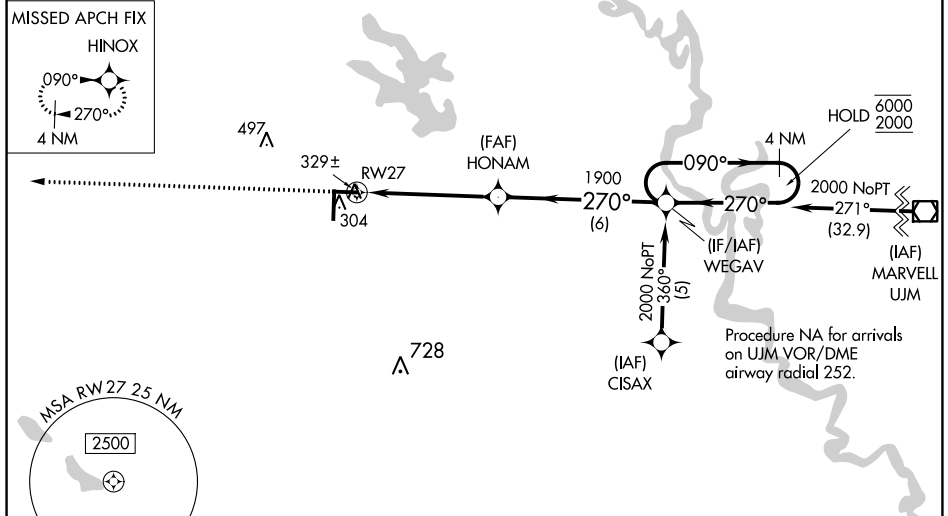


# RNAV (GPS) RWY 27

STUTTGART MUNI CARL HUMPHREY FLD (SGT)

APP CRS	Rwy Idg	<b>5002</b>
<b>270°</b>	TDZE	<b>222</b>
	Apt Elev	<b>224</b>

RNP APCH - GPS.		MISSED APPROACH: Climb to 2000 direct HINOX and hold.	
Rwy 27 helicopter visibility reduction below 3/4 SM NA.		AWOS-3PT	LITTLE ROCK APP CON
		<b>119.025</b>	<b>135.4 353.6</b>
		CLNC DEL	UNICOM
		<b>123.7</b>	<b>122.8 (CTAF) 0</b>



SC-1, 28 NOV 2024 to 26 DEC 2024

SC-1, 28 NOV 2024 to 26 DEC 2024