

WAAS CH 97311 W36A	APP CRS 360°	Rwy Idg 6015 TDZE 224 Apt Elev 224
--	------------------------	---

RNAV (GPS) RWY 36

STUTTGART MUNI CARL HUMPHREY FLD (SGT)

RNP APCH

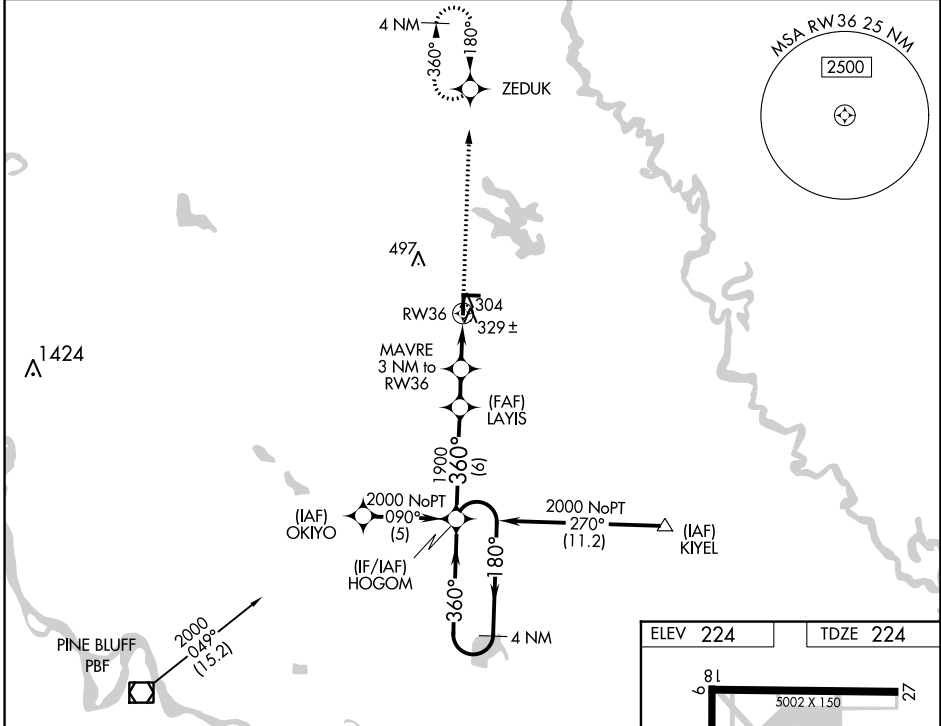
When local altimeter setting not received, use Bill and Hillary Clinton Nil/Adams Fld altimeter setting; increase LPV DA to 556 and all visibilities $\frac{1}{8}$ SM; increase all MDAs 100 feet and visibility Cats C and D $\frac{1}{4}$ SM. For inop MALSF when using Bill and Hillary Clinton Nil/Adams Fld altimeter setting, increase LPV all Cats visibility to $1\frac{1}{8}$ mile. VDP NA when using Bill and Hillary Clinton Nil/Adams Fld altimeter setting.

MALSF



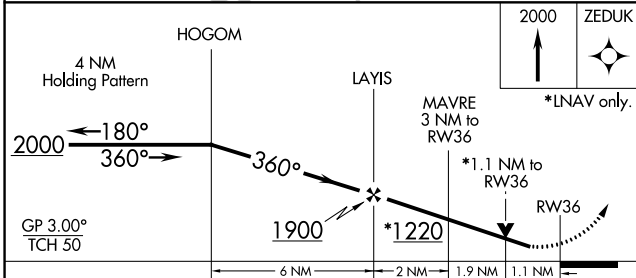
MISSED APPROACH:
Climb to 2000 direct ZEDUK and hold.

AWOS-3PT 119.025	LITTLE ROCK APP CON 135.4 353.6	CLINC DEL 123.7	UNICOM 122.8 (CTAF)
----------------------------	---	---------------------------	-------------------------------

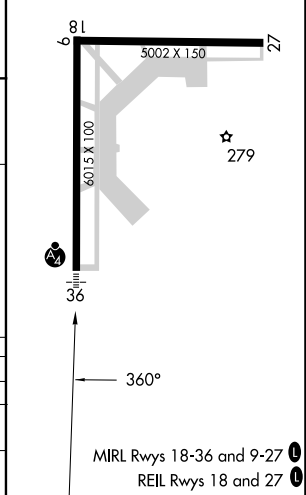


SC-1, 28 NOV 2024 to 26 DEC 2024

SC-1, 28 NOV 2024 to 26 DEC 2024



ELEV 224	TDZE 224
----------	----------



CATEGORY	A	B	C	D
LPV DA		474- $\frac{3}{4}$	250 (300- $\frac{3}{4}$)	
RNAV MDA	620- $\frac{3}{4}$	396 (400- $\frac{3}{4}$)		620- $\frac{1}{4}$ 396 (400- $\frac{1}{4}$)
CIRCLING	660-1 436 (500-1)	680-1 456 (500-1)	760-1 $\frac{1}{2}$ 536 (600-1 $\frac{1}{2}$)	860-2 636 (700-2)

MIRL Rwy 18-36 and 9-27
REIL Rwy 18 and 27