

SUMTER, SOUTH CAROLINA

HI-ILS or LOC Z RWY 22R

LOC I-JWU 108.7	APCH CRS 223°	22R	22L
		Rwy ldg	10,014 8014
		TDZE	240 235
		Arprt Elev	241 241

JAL-409 [USAF]

SHAW AFB (KSSC)

RADAR or DME Required.

▼ * When ALS inop, increase RVR to 40 and vis to ¾ mile.
 ** When ALS inop, increase vis to 1¼ miles.



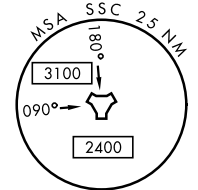
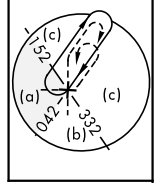
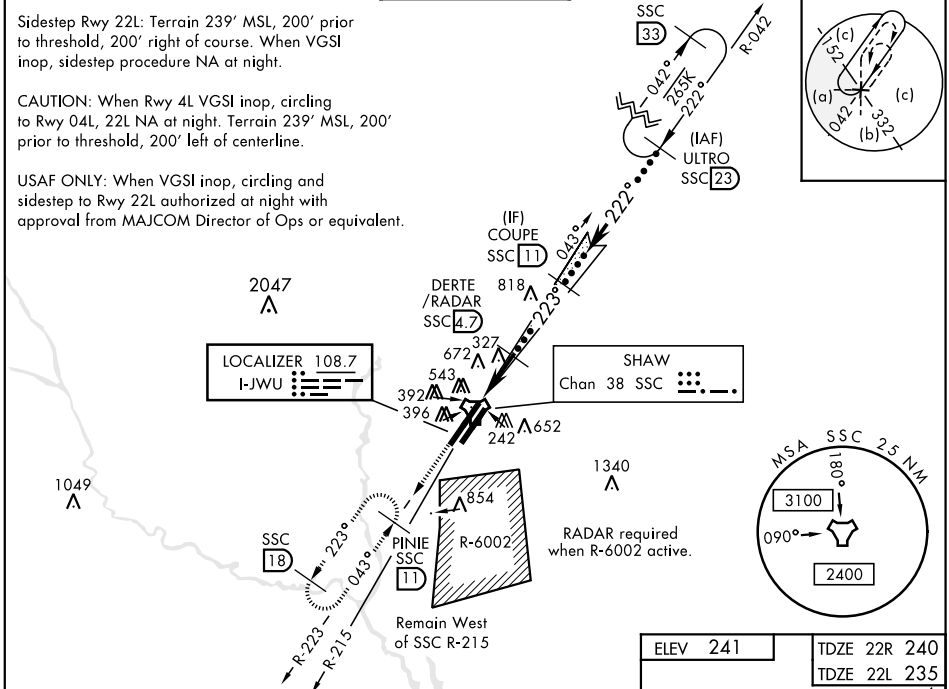
MISSED APPROACH: Climbing to 2000, intercept SSC TACAN R-223 to PINIE and hold.

ATIS ★ 132.125 270.1	SHAW APP CON 125.4 318.1	SHAW TOWER ★ 126.65 254.25	GND CON 126.1 275.8	CLNC DEL 126.1 275.8
--------------------------------	------------------------------------	--------------------------------------	-------------------------------	--------------------------------

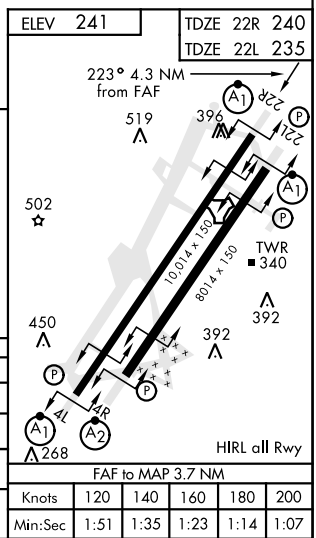
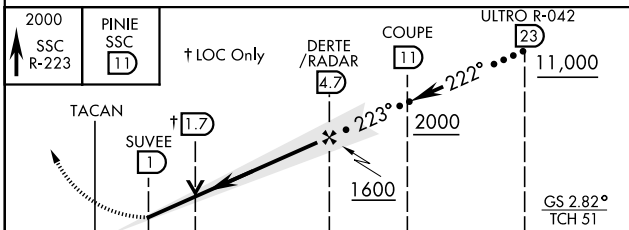
Sidestep Rwy 22L: Terrain 239' MSL, 200' prior to threshold, 200' right of course. When VGSI inop, sidestep procedure NA at night.

CAUTION: When Rwy 4L VGSI inop, circling to Rwy 04L, 22L NA at night. Terrain 239' MSL, 200' prior to threshold, 200' left of centerline.

USAF ONLY: When VGSI inop, circling and sidestep to Rwy 22L authorized at night with approval from MAJCOM Director of Ops or equivalent.



EMERG SAFE ALT 100 NM 3800



CATEGORY	C	D	E
S-ILS 22R *	440/24	200 (200-½)	
S-LOC 22R **	660/40	420 (500-¾)	
SIDESTEP ** 22L	660-1¼	425 (500-1¼)	
CIRCLING	1000-2¼ 759 (800-2¼)	1000-2½ 759 (800-2½)	1000-2¾ 759 (800-2¾)

Knots	120	140	160	180	200
	Min:Sec	1:51	1:35	1:23	1:14

SUMTER, SOUTH CAROLINA

33°58'N-80°28'W

SHAW AFB (KSSC)

Amdt 1 10OCT19

HI-ILS or LOC Z RWY 22R

SE-2, 28 NOV 2024 to 26 DEC 2024

SE-2, 28 NOV 2024 to 26 DEC 2024