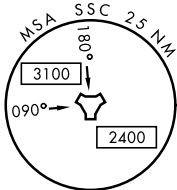
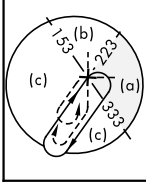
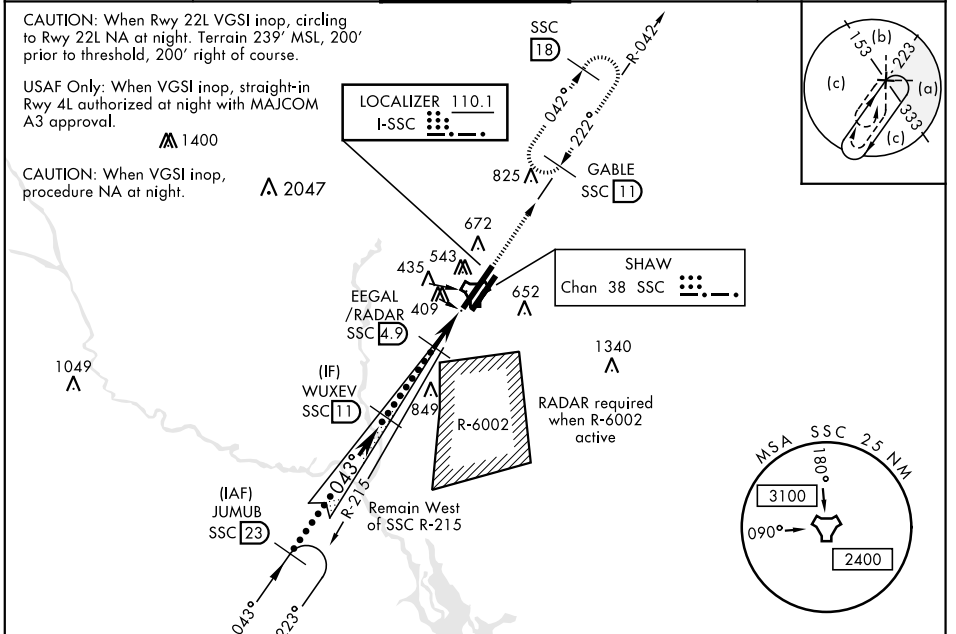


HI-ILS or LOC Z RWY 4L

LOC I-SSC 110.1	APCH CRS 043°	Rwy Idg TDZE 240 Arprt Elev 241	4L 8014 236	4R 241	JAL-409 [USAF]	SHAW AFB (KSSC)
---------------------------	-------------------------	---	---------------------------------	------------------	----------------	-----------------

RADAR or DME Required.		ALSIF-1 	MISSED APPROACH: Climbing to 2000, intercept SSC TACAN R-042 to GABLE and hold.
* When ALS inop, increase vis to 1 5/8 miles.			

ATIS ★ 132.125 270.1	SHAW APP CON 125.4 318.1	SHAW TOWER ★ 126.65 254.25	GND CON 126.1 275.8	CLNC DEL 126.1 275.8
--------------------------------	------------------------------------	--------------------------------------	-------------------------------	--------------------------------



ELEV 241	TDZE 4L 240	TDZE 4R 236
----------	-------------	-------------

CATEGORY	C	D	E
S-ILS 4L *	490/50	250	(300-1)
S-LOC 4L *	780/55	540	(600-1)
SIDESTEP * 4R	780-1 3/8	544	(600-1 3/8)
CIRCLING	1000-2 1/4 759 (800-2 1/4)	1000-2 1/2 759 (800-2 1/2)	1000-2 3/4 759 (800-2 3/4)

FAF to MAP 3.1 NM					
Knots	120	140	160	180	200
Min:Sec	1:33	1:20	1:10	1:02	0:56

HI-ILS or LOC Z RWY 4L

SE-2, 28 NOV 2024 to 26 DEC 2024

SE-2, 28 NOV 2024 to 26 DEC 2024