

HI-TACAN Z RWY 4L

TACAN SSC Chan 38	APCH CRS 043°	Rwy Idg 10,014	4R 8014
		TDZE 240	236
		Arprt Elev 241	241

JAL-409 [USAF]

SHAW AFB (KSSC)

▼ * When ALS inop, increase vis to 1 ½ miles.



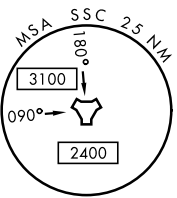
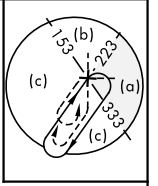
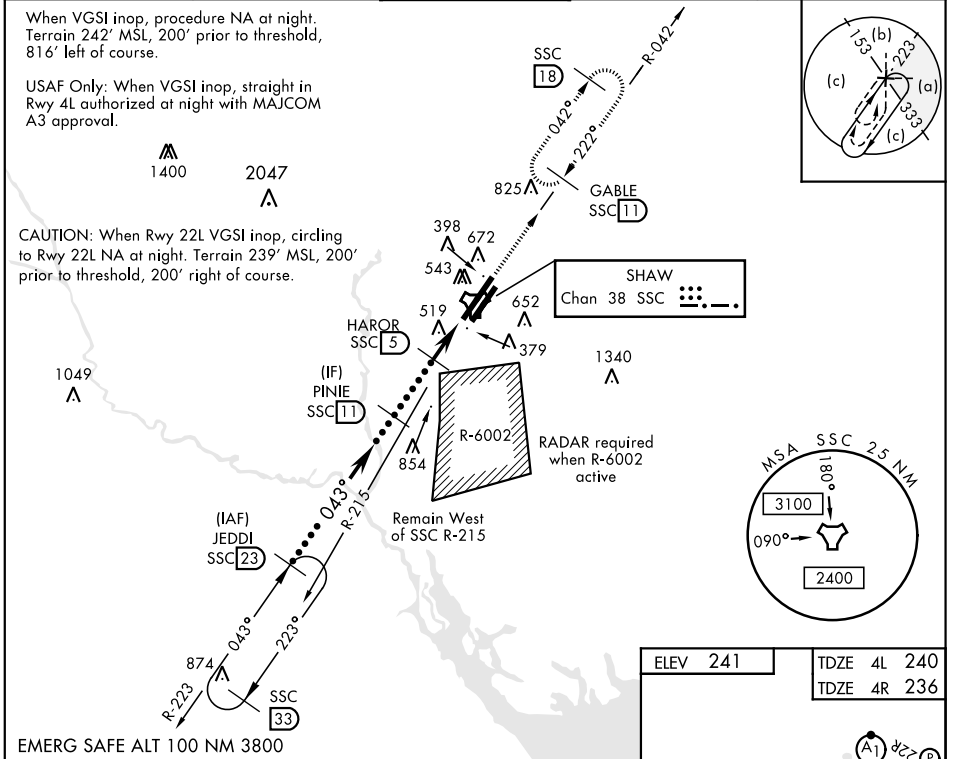
MISSED APPROACH: Climbing to 2000, intercept SSC TACAN R-042 to GABLE and hold.

ATIS ★ 132.125 270.1	SHAW APP CON 125.4 318.1	SHAW TOWER ★ 126.65 254.25	GND CON 126.1 275.8	CLNC DEL 126.1 275.8
--------------------------------	------------------------------------	--------------------------------------	-------------------------------	--------------------------------

When VGSI inop, procedure NA at night. Terrain 242' MSL, 200' prior to threshold, 816' left of course.

USAF Only: When VGSI inop, straight in Rwy 4L authorized at night with MAJCOM A3 approval.

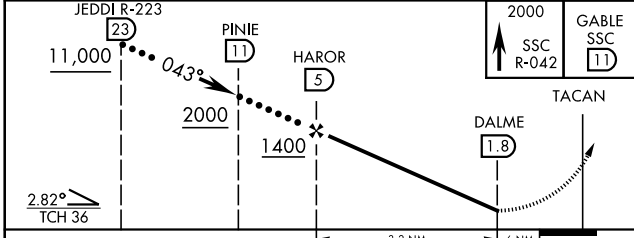
CAUTION: When Rwy 22L VGSI inop, circling to Rwy 22L NA at night. Terrain 239' MSL, 200' prior to threshold, 200' right of course.



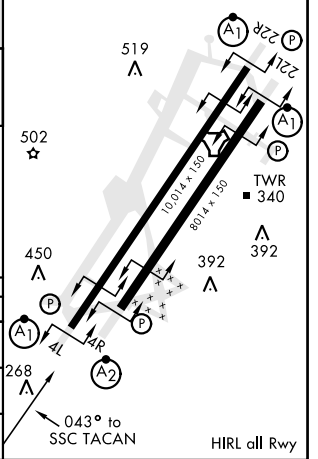
SE-2, 28 NOV 2024 to 26 DEC 2024

SE-2, 28 NOV 2024 to 26 DEC 2024

EMERG SAFE ALT 100 NM 3800



ELEV 241	TDZE 4L 240
	TDZE 4R 236



CATEGORY	C	D	E
S-4L *	800/60	560 (600-1½)	
SIDESTEP 4R *	800-1¾	564 (600-1¾)	
CIRCLING	1000-2¼ 759 (800-2¼)	1000-2½ 759 (800-2½)	1000-2¾ 759 (800-2¾)

HI-TACAN Z RWY 4L