

SUMTER, SOUTH CAROLINA

ILS or LOC Y RWY 4L

LOC I-SSC 110.1	APCH CRS 043°	Rwy Idg TDZE Arprt Elev	4L 10,014 240 241	4R 8014 236 241
---------------------------	-------------------------	-------------------------------	---	---

AL-409 [USAF]

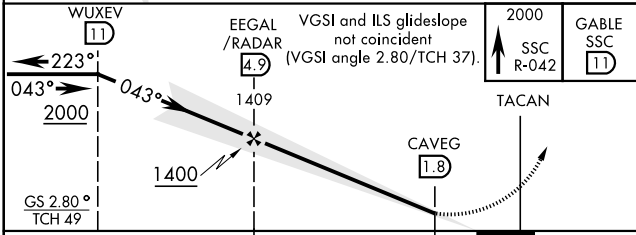
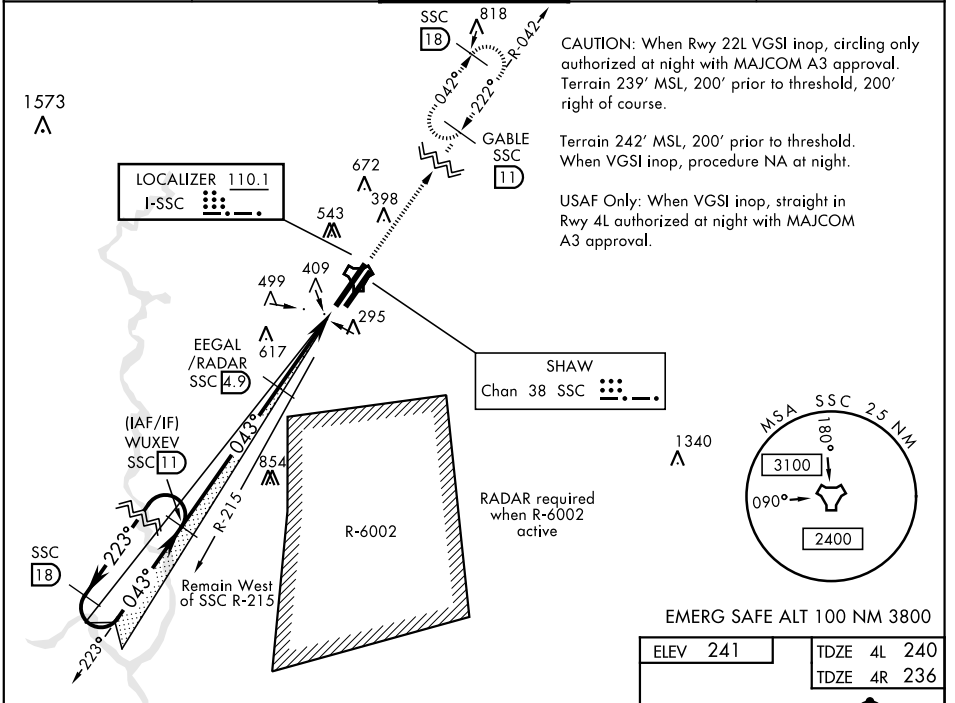
SHAW AFB (KSSC)

RADAR or DME Required.

ALSF-1 (A1)

MISSED APPROACH: Climbing to 2000, intercept SSC TACAN R-042 to GABLE and hold.

ATIS ★ 132.125 270.1	SHAW APP CON 125.4 318.1	SHAW TOWER ★ 126.65 254.25	GND CON 126.1 275.8	CLNC DEL 126.1 275.8
--------------------------------	------------------------------------	--------------------------------------	-------------------------------	--------------------------------



ELEV 241	TDZE 4L 240
	TDZE 4R 236

519 Δ

435 Δ

502 Δ

450 Δ

407 Δ

268 Δ

392 Δ

392 Δ

340 Δ

10014 x 150

8014 x 150

4L

4R

043° 3.7 NM from FAF

HIRL all Rwy

FAF to MAP 3.1 NM

Knots	60	90	120	150	180
Min:Sec	3:06	2:04	1:33	1:14	1:02

CATEGORY	A	B	C	D	E
S-ILS 4L		490/50	250	(300-1)	
S-LOC 4L *	780/50	540 (600-1)	780/55	540 (600-1)	
SIDESTEP 4R *	780/50	544 (600-3/4)	780-1 3/8	544 (600-1 3/8)	
CIRCLING	820-1	880-1	1000-2 1/4	1000-2 1/2	1000-2 3/4
	579 (600-1)	639 (700-1)	759 (800-2 1/4)	759 (800-2 1/2)	759 (800-2 3/4)

SUMTER, SOUTH CAROLINA

33° 58' N-80° 28' W

SHAW AFB (KSSC)

Amtd 1 10OCT19

ILS or LOC Y RWY 4L

SE-2, 28 NOV 2024

SE-2, 28 NOV 2024