

SUMTER, SOUTH CAROLINA

TACAN Y RWY 4L

TACAN SSC Chan 38	APCH CRS 043°	Rwy Idg 4L TDZE 240 Arprt Elev 241	4R 8014 236 241
--------------------------	----------------------	---	--

AL-409 [USAF]

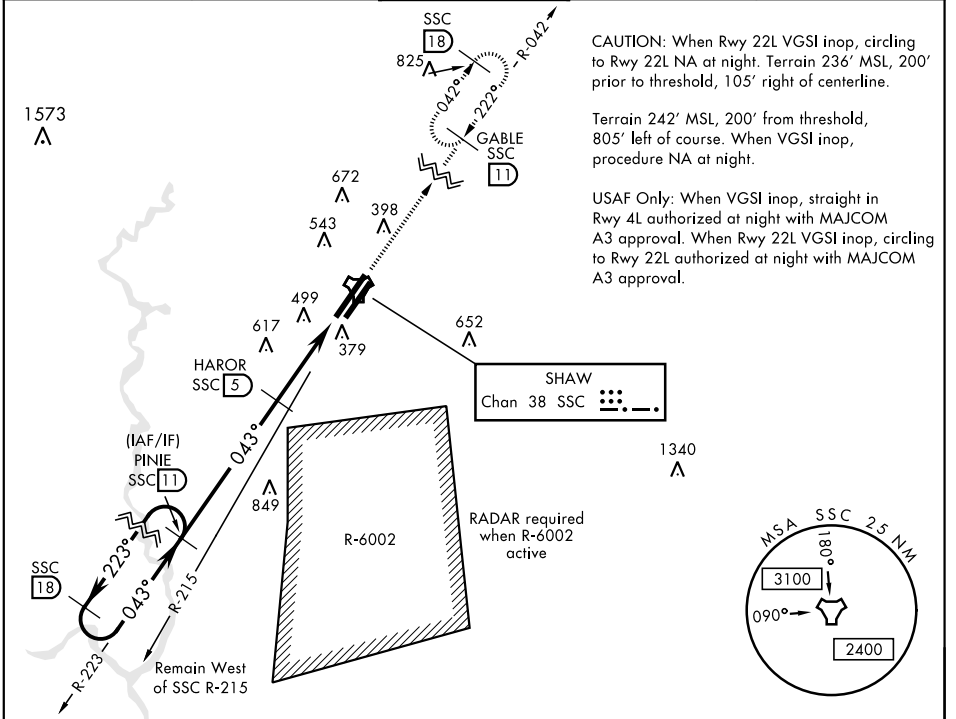
SHAW AFB (KSSC)

▼ * When ALS inop, increase CAT AB RVR to 55 and vis to 1 mile, CAT CDE vis to 1½ miles.



MISSED APPROACH: Climbing to 2000, intercept SSC TACAN R-042 to GABLE and hold.

ATIS ★ 132.125 270.1	SHAW APP CON 125.4 318.1	SHAW TOWER ★ 126.65 254.25	GND CON 126.1 275.8	CLNC DEL 126.1 275.8
--------------------------------	------------------------------------	--------------------------------------	-------------------------------	--------------------------------



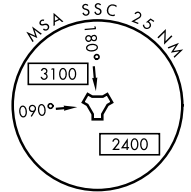
CAUTION: When Rwy 22L VGSI inop, circling to Rwy 22L NA at night. Terrain 236' MSL, 200' prior to threshold, 105' right of centerline.

Terrain 242' MSL, 200' from threshold, 805' left of course. When VGSI inop, procedure NA at night.

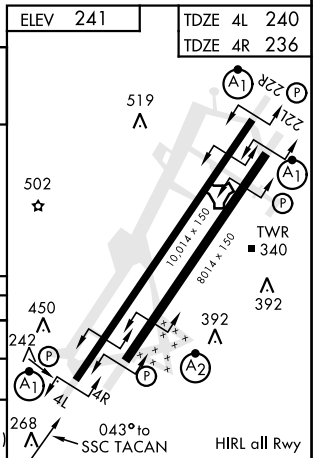
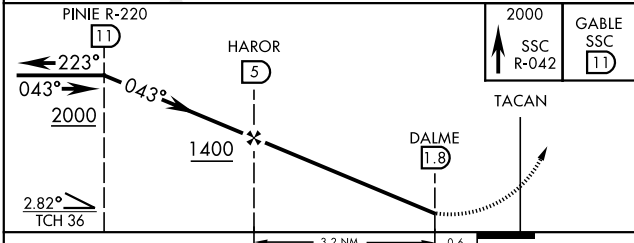
USAF Only: When VGSI inop, straight in Rwy 4L authorized at night with MAJCOM A3 approval. When Rwy 22L VGSI inop, circling to Rwy 22L authorized at night with MAJCOM A3 approval.

SHAW
Chan 38 SSC

RADAR required when R-6002 active



EMERG SAFE ALT 100 NM 3800



CATEGORY	A	B	C	D	E
S-4L *	800/50	560 (600-1)	800/60	560 (600-1½)	
SIDESTEP * 4R	800/50	564 (600-1)	800-1¾	564 (600-1½)	
CIRCLING	820-1 579 (600-1)	880-1 639 (700-1)	1000-2¼ 759 (800-2¼)	1000-2½ 759 (800-2½)	1000-2¾ 759 (800-2¾)

SUMTER, SOUTH CAROLINA
Amdt 1 07NOV19

33° 58' N-80° 28' W

SHAW AFB (KSSC)

TACAN Y RWY 4L

SE-2, 28 NOV 2024 to 26 DEC 2024

SE-2, 28 NOV 2024 to 26 DEC 2024