

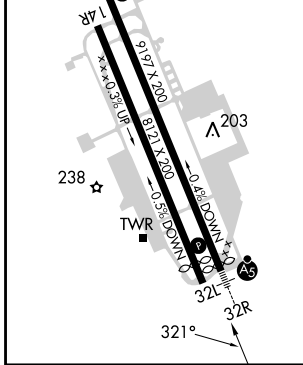
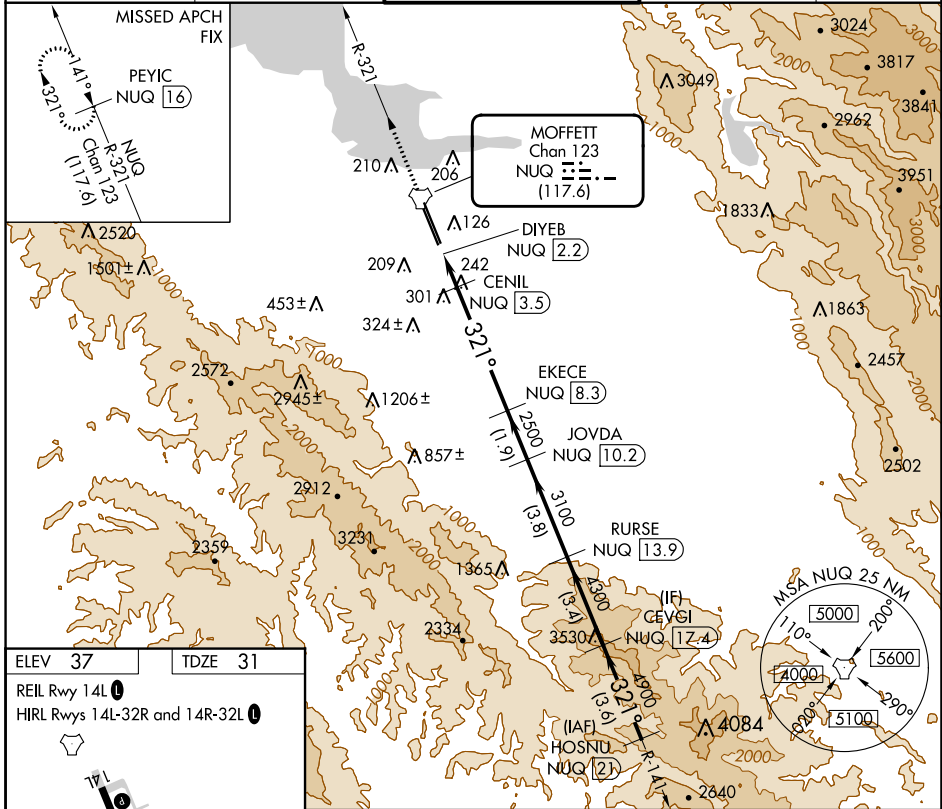
TACAN NUQ Chan <b>123</b> <b>(117.6)</b>	APP CRS <b>321°</b>	Rwy ldg TDZE Apt Elev	<b>9006</b> <b>31</b> <b>37</b>
--	------------------------	-----------------------------	---------------------------------------

# TACAN RWY 32R

MOFFETT FEDERAL AIRFIELD (NUQ)

RADAR required for procedure entry.		MALSR	MISSED APPROACH: Climb to 3200 on NUQ TACAN R-321 to PEYIC/16 DME and hold.
<p>For inop ALS, increase Cat E visibility to 1 1/2 SM.</p>			

ATIS <b>124.175 283.0</b>	NORCAL APP CON <b>120.1 290.25</b>	MOFFETT TOWER ★ <b>119.55 (CTAF) 259.65</b>	GND CON <b>121.85 278.95</b>	CLNC DEL <b>296.75</b>
------------------------------	---------------------------------------	--	---------------------------------	---------------------------



ELEV 37	TDZE 31	REIL Rwy 14L					HIRL Rws 14L-32R and 14R-32L				
<p>3200 PEYIC NUQ R-321 [16] VGSI and descent angles not coincident (VGSI Angle 3.00/TCH 55). EKECE NUQ [8.3] JOVDA NUQ [10.2] RURSE NUQ [13.9] CEVGI NUQ [17.4] HOSNU NUQ [21] 3.48° TCH 55 720 2500 3100 4300 4900 5500 0.5 1.3 NM 4.8 NM 1.9 NM 3.8 NM 3.4 NM 3.6 NM</p>											
CATEGORY	A	B	C	D	E						
S-32R	560-1/2	529 (600-1/2)	560-1	529 (600-1)							
CIRCLING	560-1 523 (600-1)	600-1 563 (600-1)	620-1/2 583 (600-1/2)	780-2/2 743 (800-2/2)	940-3 903 (1000-3)						

SW-2, 28 NOV 2024 to 26 DEC 2024

SW-2, 28 NOV 2024 to 26 DEC 2024