

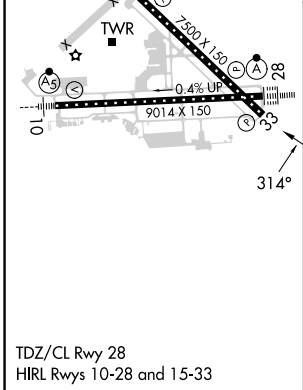
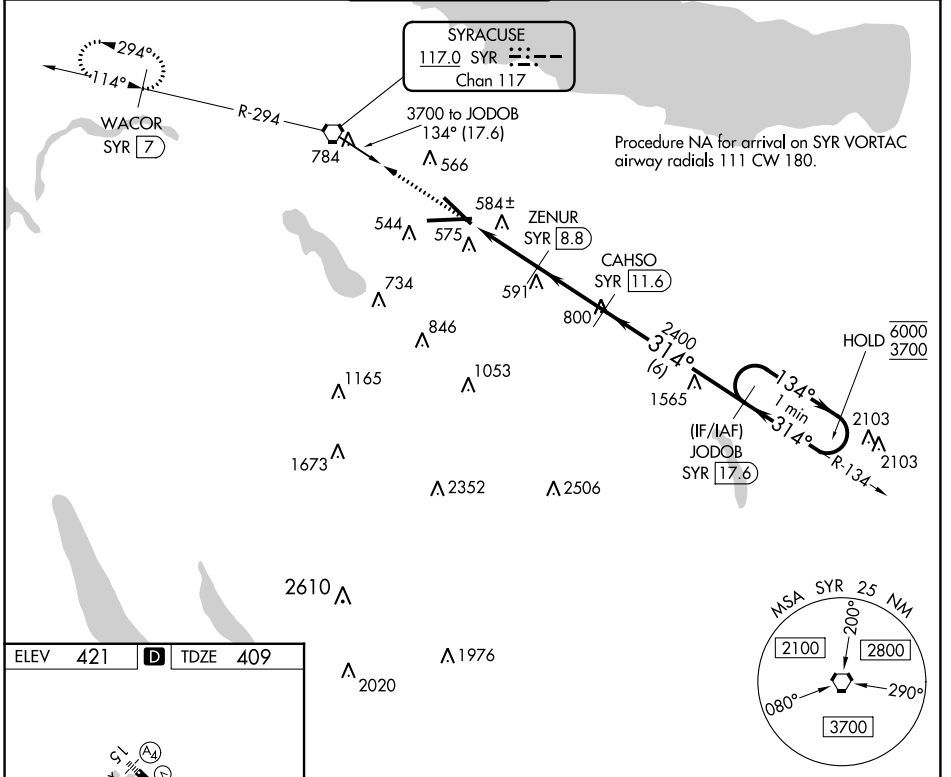
VORTAC SYR <b>117.0</b> Chan 117	APP CRS <b>314°</b>	Rwy ldg TDZE Apt Elev	<b>7500</b> <b>409</b> <b>421</b>
--	------------------------	-----------------------------	---

# TACAN RWY 33

SYRACUSE HANCOCK INTL (SYR)

**▼** Rwy 33 helicopter visibility reduction below 3/4 SM NA.  
**▲** MISSED APPROACH: Climb to 3000 direct SYR VORTAC and on SYR VORTAC R-294 to WACOR/7 DME and hold.

ATIS <b>124.225</b>	SYRACUSE APP CON <b>126.125 269.125</b>	SYRACUSE TOWER <b>120.3 239.0</b>	GND CON <b>121.7 348.6</b>	CLNC DEL <b>125.05 257.775</b>
------------------------	--	--------------------------------------	-------------------------------	-----------------------------------



ELEV 421	<b>D</b>	TDZE 409						
3000	SYR R-294	WACOR SYR 7	JODOB SYR 17.6	CAHSO SYR 11.6	ZENUR SYR 8.8	SYR 7.1	SYR 5.9	One Minute Holding Pattern
1380	134°	314°	6000	3700	2400	1380	1380	
1.2	1.7	2.8	6					
CATEGORY	A	B	C	D				
S-33	840/55	431 (500-1)	840-1¼	431 (500-1¼)				
<b>C</b> CIRCLING	900-1 479 (500-1)	920-1 499 (500-1)	1020-1½ 599 (600-1½)	1180-2½ 759 (800-2½)				

NE-2, 28 NOV 2024 to 26 DEC 2024

NE-2, 28 NOV 2024 to 26 DEC 2024