

FORT LEWIS, WASHINGTON

RNAV (GPS) RWY 33

-(USA)

GRAY AAF (JOINT BASE LEWIS MCCHORD) (KGRF)

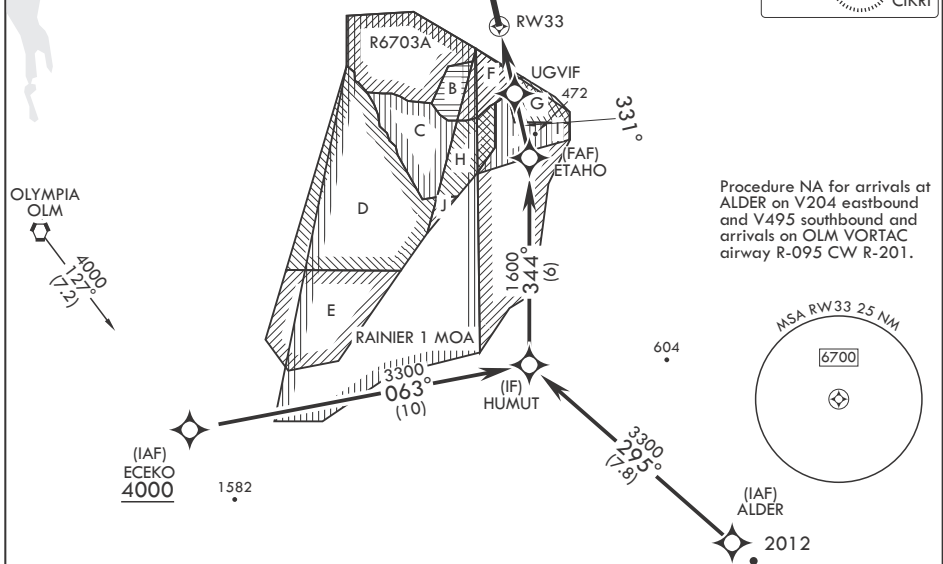
APCH CRS	Rwy Idg	6124
331°	TDZE	301
	Arprt Elev	301

RNP APCH
 ▼ * Circling not authorized W of Rwy 15-33.

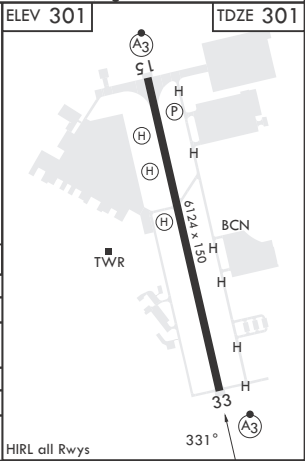
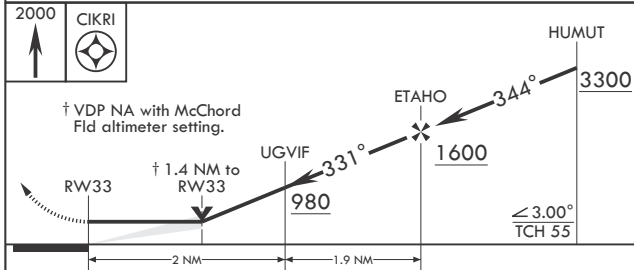
SSALR MISSED APPROACH: Climb to 2000 direct CIKRI and hold.

ATIS 124.65 306.2	SEATTLE APP CON/DEP CON 120.1 290.9	TOWER * 119.325 (CTAF) 256.8	GND CON 121.9 290.2	CLNC DEL 121.9 290.2
----------------------	--	---------------------------------	------------------------	-------------------------

When local altimeter setting not received, use McChord Fld altimeter setting.



Procedure NA for arrivals at ALDER on V204 eastbound and V495 southbound and arrivals on OLM VORTAC airway R-095 CW R-201.



CATEGORY	A	B	C	D
RNAV MDA	800-½	499 (500-½)	800-1	499 (500-1)
C CIRCLING*	840-1	539 (600-1)	840-1½ 539 (600-1½)	920-2 619 (700-2)
MC CHORD FLD ALTIMETER SETTING MINIMUMS				
RNAV MDA	820-½	519 (600-½)	820-1	519 (600-1)
C CIRCLING*	860-1	559 (600-1)	860-1½ 559 (600-1½)	940-2 639 (700-2)

FORT LEWIS, WASHINGTON
 Amdt 3 10AUG23

47°05'N - 122°35'W GRAY AAF (JOINT BASE LEWIS MCCHORD) (KGRF)

RNAV (GPS) RWY 33

NW-1, 28 NOV 2024 to 26 DEC 2024

NW-1, 28 NOV 2024 to 26 DEC 2024