

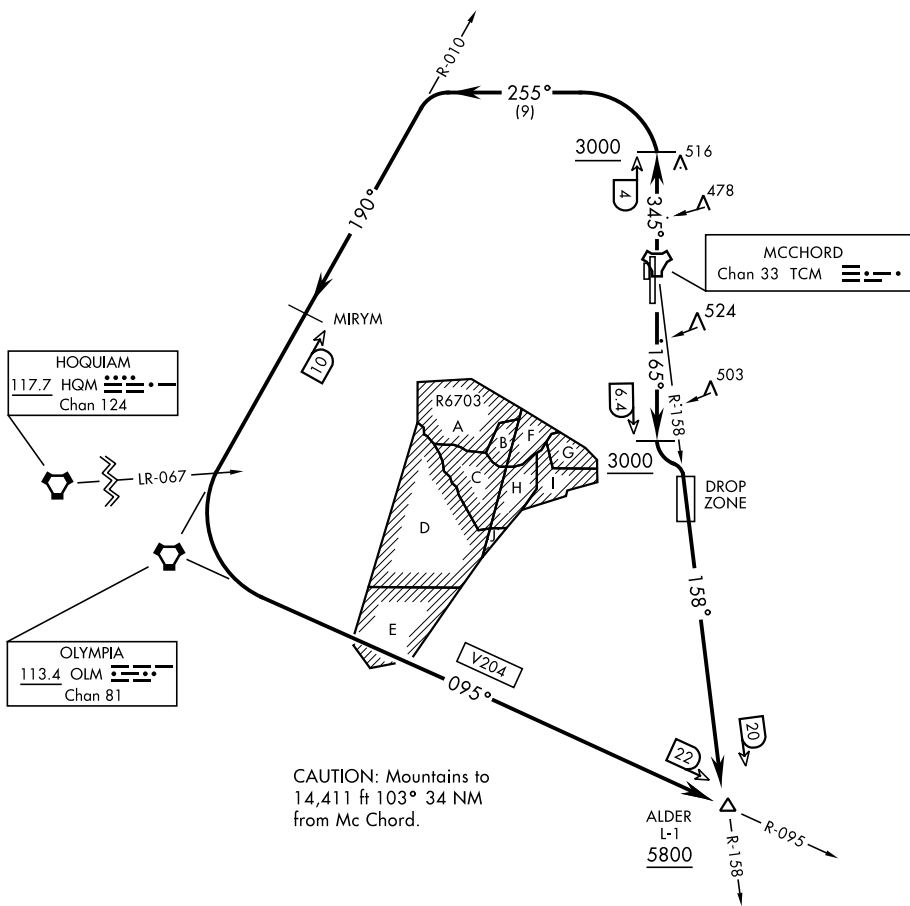
ALDER-TWO DEPARTURE (ALDER2 • ALDER)

MCCHORD FLD (KTCM)
TACOMA, WASHINGTON

AL-414 [USAF]

ATIS
135.825 270.1
GND CON
118.175 279.65
TOWER
124.8 259.3
SEATTLE DEP CON
126.5 377.15

If unable to make ATC charted crossing restrictions advise ATC prior to departure.



NW-1, 28 NOV 2024 to 26 DEC 2024

NW-1, 28 NOV 2024 to 26 DEC 2024

DEPARTURE ROUTE DESCRIPTION

TAKEOFF RWY 16: Climb on track 165° to cross TCM TACAN 6.4 DME, at or above 3000. Then turn left to intercept TCM R-158 to cross ALDER at or above 5800.

TAKEOFF RWY 34: Climb on track 345° to cross TCM TACAN 4 DME at or above 3000. Then turn left heading 255° to intercept OLM VORTAC R-010 MIRYM then OLM. Then via V204 to cross ALDER at or above 5800.

ALDER-TWO DEPARTURE (ALDER2 • ALDER)

TACOMA, WASHINGTON
MCCHORD FLD (KTCM)