

TACOMA, WASHINGTON

ILS or LOC RWY 16

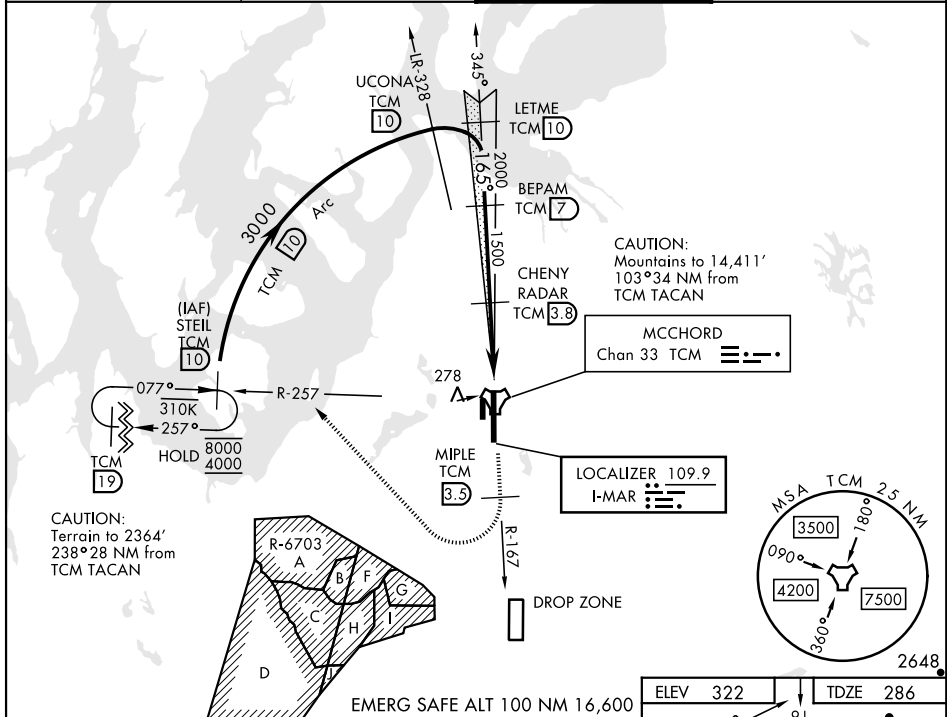
LOC I-MAR 109.9	APCH CRS 165°	Rwy ldg 10,108 TDZE 286 Arpt Elev 322
---------------------------	-------------------------	--

AL-414 [USAF]

MCCHORD FLD (KTCM)

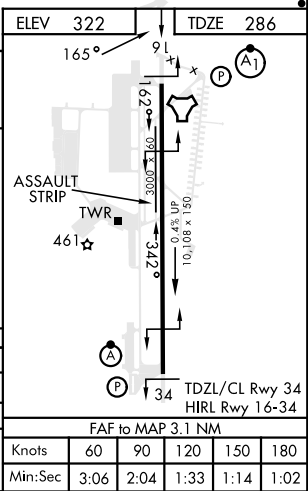
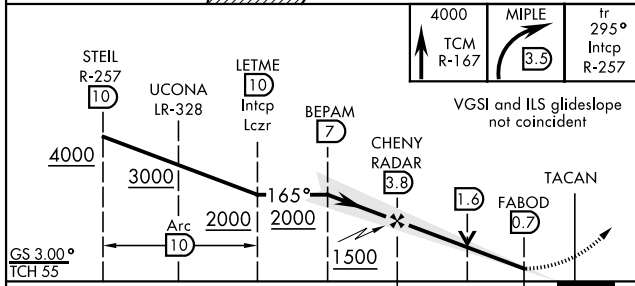
RADAR or DME required.		ALSIF-1 (A1)	MISSED APPROACH: Climb to 4000 on TCM TACAN R-167. At 3.5 DME turn right via 295° course to intercept TCM R-257 to STEL and hold. Continue climb in hold to 4000.
------------------------	--	------------------------	---

ATIS 135.825 270.1	SEATTLE APP CON 126.5 377.15	TOWER 124.8 259.3	GND CON 118.175 279.65
------------------------------	--	-----------------------------	----------------------------------



NW-1, 28 NOV 2024 to 26 DEC 2024

NW-1, 28 NOV 2024 to 26 DEC 2024



EMERG SAFE ALT 100 NM 16,600	4000 TCM R-167	MIPLE (3.3)	tr 295° Intcpcp R-257		
VGS1 and ILS glideslope not coincident					
STEEL R-257 (10)	UCONA LR-328	LETME (10) Intcpcp Lczr	BEPAM (7)		
4000	3000	2000	1500		
GS 3.00° TCH 55	Arc (10)	165°	3.1 NM		
CATEGORY	A	B	C	D	E
S-ILS 16*	601/40		315	(300-3/4)	
S-LOC 16**	860/40	574 (600-3/4)	860-1 1/4	574	(600-1 1/4)
***	940-1	618 (700-1)	940-1 3/4	940-2	1020-2 1/2
CIRCLING	940-1	618 (700-1)	618 (700-1 3/4)	618 (700-2)	698 (700-2 1/2)

TACOMA, WASHINGTON
Amdt 5 20APR23

47°08'N-122°29'W

MCCHORD FLD (KTCM)

ILS or LOC RWY 16

FAF to MAP 3.1 NM					
Knots	60	90	120	150	180
Min:Sec	3:06	2:04	1:33	1:14	1:02