

ATIS
 135.825 270.1
 GND CON
 118.175 279.65
 TOWER
 124.8 259.3
 SEATTLE DEP CON
 126.5 377.15

If unable to make ATC charted crossing restriction advise ATC prior to departure.

RADAR REQUIRED

Maximum 250 KIAS

Radar vectors required within 10 NM after departure.

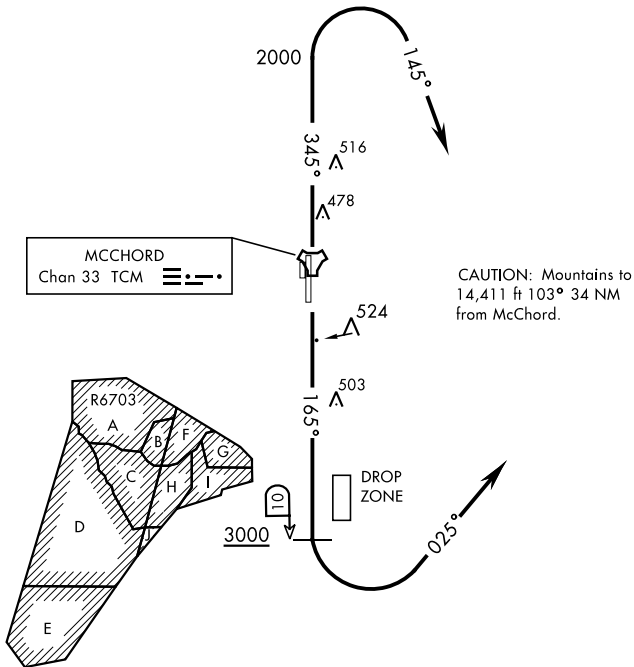


SEATTLE
 116.8 SEA
 Chan 115

L-1

NW-1, 28 NOV 2024 to 26 DEC 2024

NW-1, 28 NOV 2024 to 26 DEC 2024



OLYMPIA
 113.4 OLM
 Chan 81



MCCHORD
 Chan 33 TCM



DEPARTURE ROUTE DESCRIPTION

TAKEOFF RWY 16: Climb on track 165° to cross TCM TACAN 10 DME at or above 3000. Then turn left tracking 025° to expect radar vectors. Maintain ATC assigned altitude.

TAKEOFF RWY 34: Climb on track 165° to cross TCM TACAN 10 DME at or above 3000. Then turn right tracking 025° to expect radar vectors. Maintain ATC assigned altitude.