

TACOMA, WASHINGTON

23110

RNAV (GPS) RWY 16

APCH CRS	Rwy Idg	10,108
165°	TDZE	286
	Arprt Elev	322

AL-414 [USAF]

MCCHORD FLD (KTCM)

RADAR required.

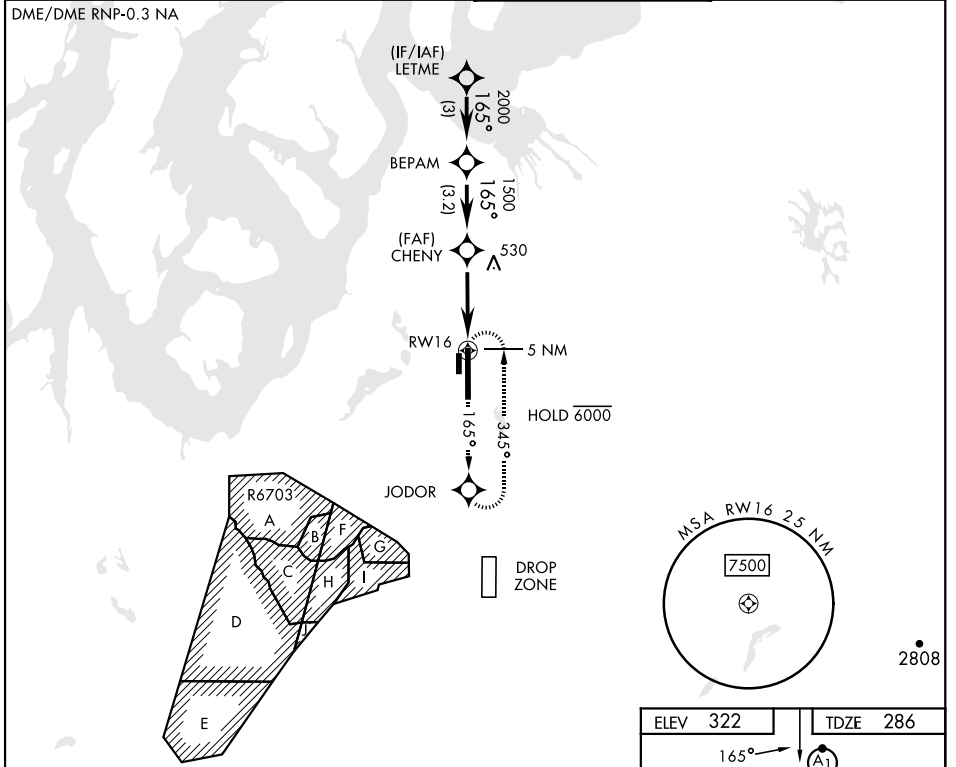


MISSED APPROACH: Climb to 4000 direct JODOR and hold. Continue climb in hold to 4000.

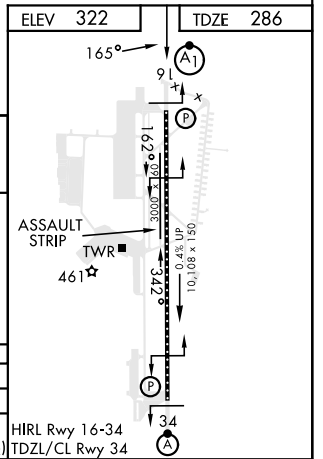
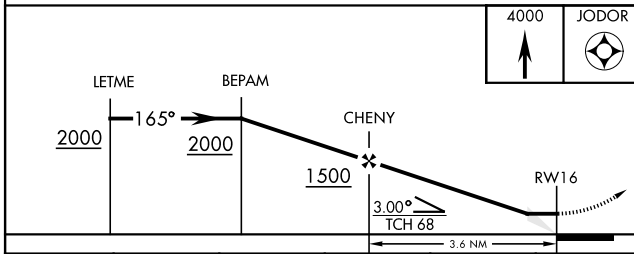
▼ * When ALS inop, increase CAT AB vis to 1 mile, CAT CDE vis to 1 3/8 miles.
 ** Circling not authorized E of rwy 16-34.

ATIS 135.825 270.1	SEATTLE APP CON 126.5 377.15	TOWER 124.8 259.3	GND CON 118.175 279.65
------------------------------	--	-----------------------------	----------------------------------

DME/DME RNP-0.3 NA



EMERG SAFE ALT 100 NM 16,600



CATEGORY	A	B	C	D	E
LNAV MDA *	780/24	494 (500-1/2)	780/50	494 (500-1)	
CIRCLING **	940-1	618 (700-1)	940-1 3/4 618 (700-1 3/4)	940-2 618 (700-2)	1020-2 1/2 698 (700-2 1/2)

TACOMA, WASHINGTON
Amdt 4 20APR23

47°08'N-122°29'W

MCCHORD FLD (KTCM)

RNAV (GPS) RWY 16

NW-1, 28 NOV 2024 to 26 DEC 2024

NW-1, 28 NOV 2024 to 26 DEC 2024