

TACAN RWY 16

TACAN TCM Chan 33	APCH CRS 160°	Rwy Idg 10,108 TDZE 286 Arprt Elev 322
-----------------------------	-------------------------	---

AL-414 [USAF]

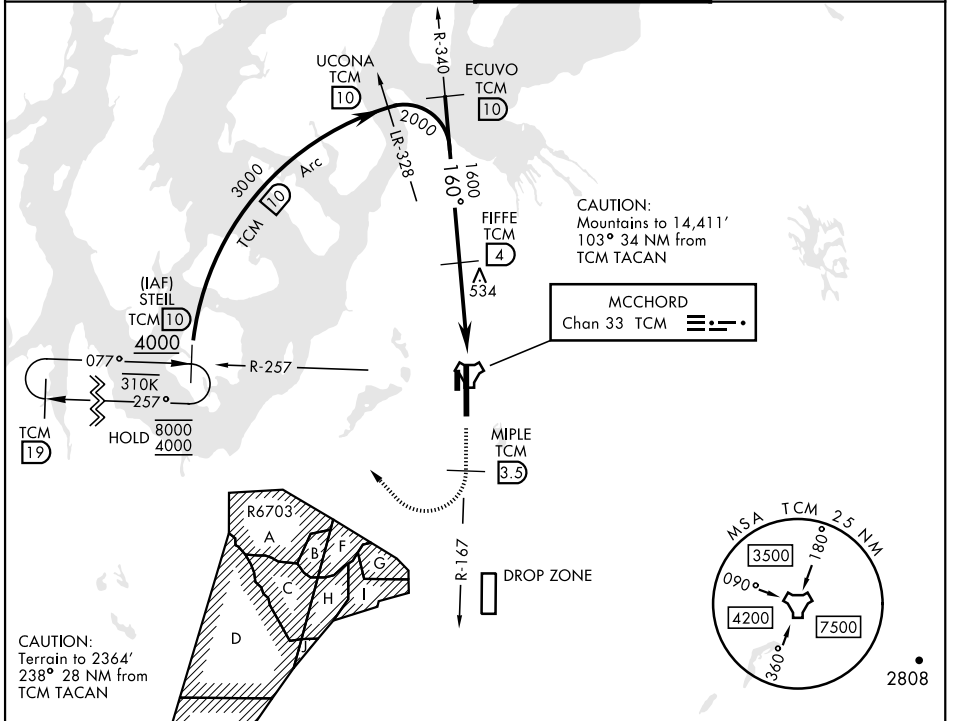
MCCHORD FLD (KTCM)

▼ * When ALS inop, increase CAT AB RVR to 55, vis to 1 mile, CAT CDE vis to 1 3/8 miles.
 ** Circling not authorized E of Rwy 16-34.

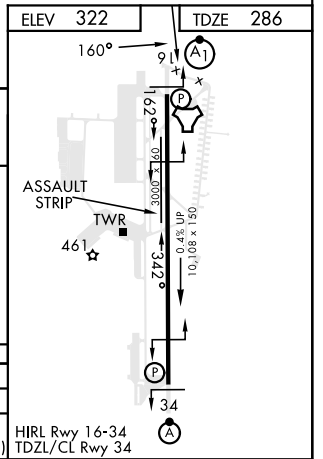
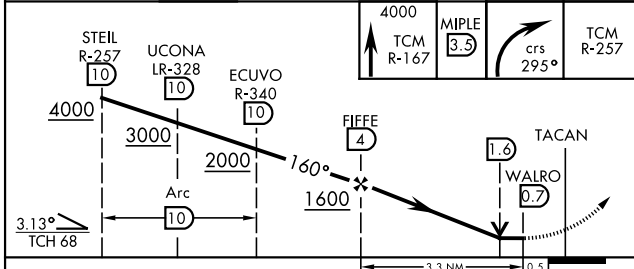
 ALSF-1

 MISSED APPROACH: Climb to 4000 on TCM TACAN R-167.
 At TCM 3.5 DME turn right via 295° course to intercept TCM R-257 to STEIL and hold, continue climb-in-hold to 4000.

ATIS 135.825 270.1	SEATTLE APP CON 126.5 377.15	TOWER 124.8 259.3	GND CON 118.175 279.65
------------------------------	--	-----------------------------	----------------------------------



ELEV 322 TDZE 286	160°
---------------------	------



CATEGORY	A	B	C	D	E
S-16 *	800/24	514 (500-1/2)	800/55	514	(500-1)
CIRCLING **	940-1	940-1 3/4	940-2	1020-2 1/2	
	618 (700-1)	618 (700-1 3/4)	618 (700-2)	698 (700-2 1/2)	

HIRL Rwy 16-34
 TDZL/CL Rwy 34

TACAN RWY 16

NW-1, 28 NOV 2024 to 26 DEC 2024

NW-1, 28 NOV 2024 to 26 DEC 2024