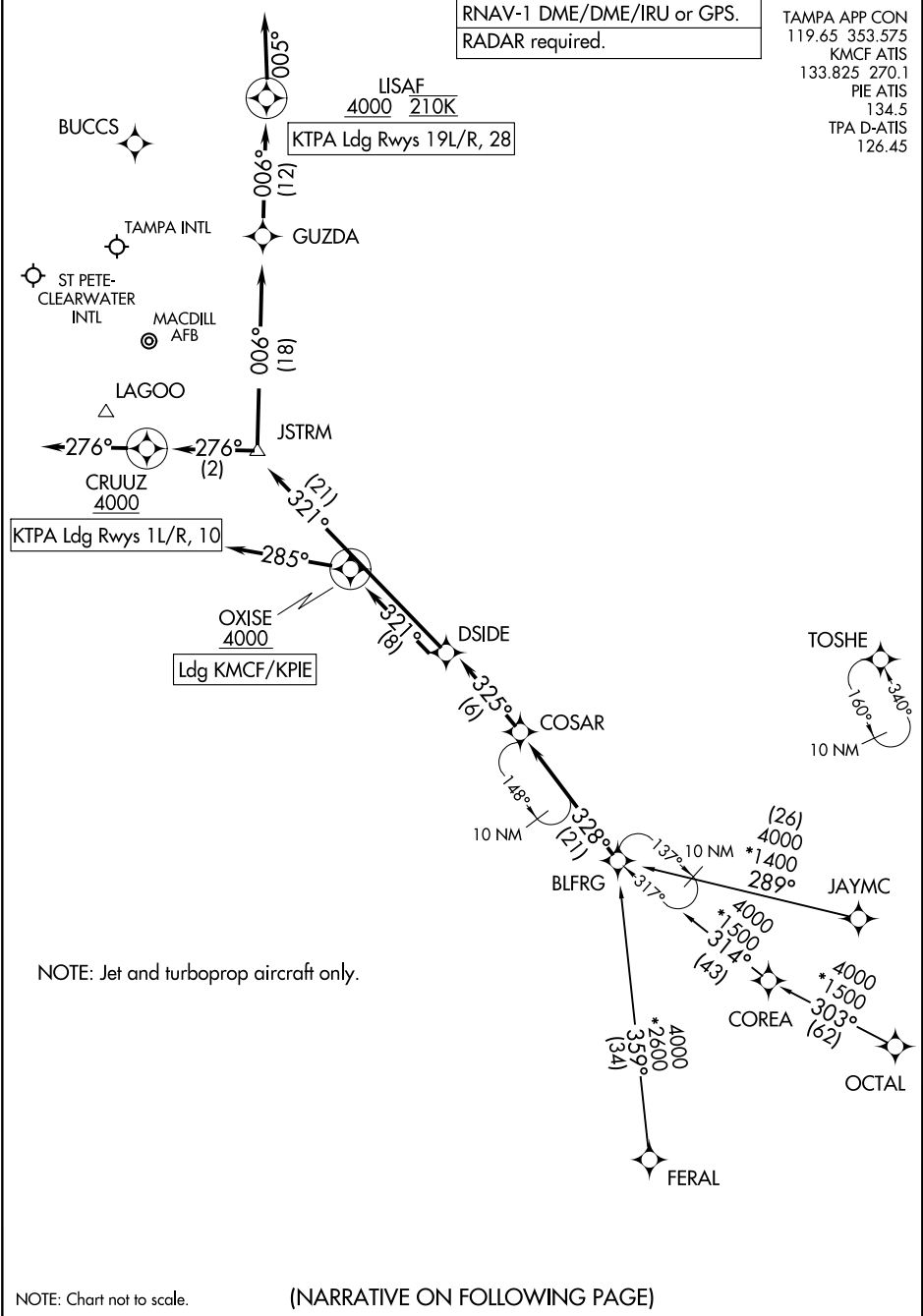


# BLFRG TWO ARRIVAL (RNAV)

TAMPA, FLORIDA

RNAV-1 DME/DME/IRU or GPS.
RADAR required.

TAMPA APP CON	119.65 353.575
KMCF ATIS	133.825 270.1
PIE ATIS	134.5
TPA D-ATIS	126.45



SE-3, 28 NOV 2024 to 26 DEC 2024

SE-3, 28 NOV 2024 to 26 DEC 2024

NOTE: Chart not to scale.

(NARRATIVE ON FOLLOWING PAGE)

# BLFRG TWO ARRIVAL (RNAV)

TAMPA, FLORIDA

ARRIVAL ROUTE DESCRIPTION

COREA TRANSITION (COREA.BLFRG2)

FERAL TRANSITION (FERAL.BLFRG2)

JAYMC TRANSITION (JAYMC.BLFRG2)

OCTAL TRANSITION (OCTAL.BLFRG2)

KTPA: From BLFRG on track 328° to COSAR, then on track 325° to DSIDE.

LANDING KTPA RUNWAYS 1L/R, 10: From DSIDE on track 321° to JSTRM, then on track 276° to cross CRUUZ at or above 4000, then on heading 276°. Expect RADAR vectors to final approach course.

LANDING KTPA RUNWAYS 19L/R, 28: From DSIDE on track 321° to JSTRM, then on track 006° to GUZDA, then on track 006° to cross LISAF at or above 4000 and at 210K, then on track 005°. Expect RADAR vectors to final approach course.

LANDING KPIE/KMCF: From BLFRG on track 328° to COSAR, then on track 325° to DSIDE, then on track 321° to cross OXISE at or above 4000, then on heading 285°. Expect RADAR vectors to final approach course.

SE-3, 28 NOV 2024 to 26 DEC 2024

SE-3, 28 NOV 2024 to 26 DEC 2024