

KNOST TWO DEPARTURE (RNAV)

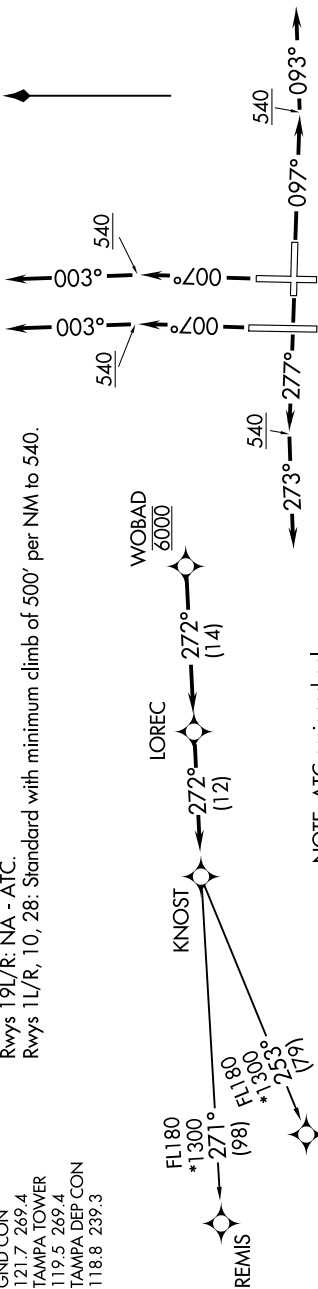
SE-3, 28 NOV 2024 to 26 DEC 2024

D-ATIS DEP 128.475
CLNC DEL 133.6
GPDIC 121.7 269.4
GND CON 119.5 269.4
TAMPA TOWER 118.8 239.3
TAMPA DEP CON

TAKEOFF MINIMUMS
Rwys 19L/R: NA - ATC.
Rwys 1L/R, 10, 28: Standard with minimum climb of 500' per NM to 540.

TOP ALTITUDE:
6000

RNAV 1 - GPS. GPS required.
RADAR required.



NOTE: ATC assigned only.
NOTE: Jets only.

NOTE: Chart not to scale.



DEPARTURE ROUTE DESCRIPTION

TAKEOFF RUNWAYS 1L/R: Climb on heading 007° to 540, then on heading 003° or as assigned by ATC, for vectors to cross WOBAD at 6000 thence

TAKEOFF RUNWAY 10: Climb on heading 097° to 540, then on heading 093° or as assigned by ATC, for vectors to cross WOBAD at 6000 thence

TAKEOFF RUNWAY 28: Climb on heading 277° to 540, then on heading 273° or as assigned by ATC, for vectors to cross WOBAD at 6000 thence

. on track 272° to LOREC, then on track 272° to KNOST. Expect clearance to filed altitude within ten minutes after departure.

CIGAR TRANSITION (KNOST2.CIGAR)
REMIS TRANSITION (KNOST2.REMIS)

SE-3, 28 NOV 2024 to 26 DEC 2024